



# Finnish Matriculation Examination 2007

STATISTICS FROM THE MATRICULATION EXAMINATION BOARD



# Finnish Matriculation Examination 2007

STATISTICS FROM THE MATRICULATION EXAMINATION BOARD

ISSN 1797-7398

Photo: plugi.fi

Graphic design: Teemu Pokela

Vammalan Kirjapaino Oy, Sastamala, Finland 2009

# Table of contents

<b>1. Introduction</b> .....	5
<b>Definitions of terms</b> .....	6
<b>Statistics on the Matriculation Examination</b> .....	9
<b>2. Candidates</b> .....	10
<b>2.1 Registration</b> .....	10
Examinees in the Matriculation Examination, by candidate category, 1998–2007 .....	11
Registration for various tests by examination period, 1998–2007 .....	13
<b>2.2 Reforms of the examination</b> .....	18
Distribution of scores on the mother-tongue tests (Finnish and Swedish together), by subtest and gender, 2007 .....	19
Distribution of the scores received on the health education test and the other general studies tests, all having 42-point maximums, by examination period, 2007.....	21
<b>2.3 Spacing out of tests over several examination periods</b> .....	23
Number of examination periods utilised by candidates in completing the matriculation examination.....	24
Numbers of tests chosen in one examination period, by candidate category, 2007 .....	25
<b>3. Results</b> .....	28
<b>3.1 Passes and fails</b> .....	28
Participation in the spring 2007 Matriculation Examination, by region .....	29
Participation in the autumn 2007 Matriculation Examination, by region.....	32
Portion of the population having completed the Matriculation Examination, by age cohort, 2006 .....	35
Age distribution of those completing the Matriculation Examination, 2007 .....	36
Portions of Matriculation Examination graduates among 18–20-year-olds, by region, 2006 .....	36
<b>3.2 Grades</b> .....	38
National distributions of grades, spring examination 2007 .....	39
National distributions of grades, autumn examination 2007 .....	43
Cutoff points, 2007 .....	47
Registrations to renew tests, and success in raising grades, 2007 .....	49
Grades received by examinees renewing tests, comparison of test/retest, 2007 .....	50
Distributions of means of grades on the tests in the Matriculation Examination, 2007.....	51
Distribution of means of grade points on tests in the Matriculation Examination, by region, 2007 ....	54
Examinees receiving grades of laudatur by examination year, 1998–2007 .....	56

<b>3.3 Placement in higher education</b> .....	57
Placement of 2006 graduates into higher education, by educational sector, regional location of institution, youth and adult education.....	58
Application to and placement in higher education immediately after graduation, by educational sector and by gender, 2006 .....	60
Graduates studying in universities and polytechnics, 1994–2005, in terms of time elapsed after the Matriculation Examination .....	60
Graduates applying for and enrolling in higher education in 2006, by year of completion of Matriculation Examination.....	61
<b>4. Membership of the Matriculation Examination Board</b> .....	62
Matriculation Examination Board members and associate members, by region of residence, 2007 ....	63
Decisions rendered by the Matriculation Examination Board, 1998–2007 .....	63
Matriculation Examination Board members and associate members, by university position or degree, then by gender.....	64
Matriculation Examination Board members and associate members by age cohort.....	64
<b>Appendices</b> .....	65

# 1. Introduction

The *Finnish Matriculation Examination 2007* presents the latest statistics related to the examination. The Matriculation Examination Board (MEB), in cooperation with the Ministry of Education, issues this publication on the basis of information provided by the Finnish Matriculation Examination Registry, while the placement of graduates in higher education was obtained from Statistics Finland.

The statistics are chronologically arranged in the order that a candidate / examinee encounters events, that is, they are divided roughly into three parts. The first part (2.1–2.3) deals with the candidates enrolling in the separate examination periods and then with how many exam periods candidates choose in taking the entire examination. This part also discusses the latest examination reforms and their outcomes. The second part (3.1–3.3) is by far the largest, concentrating on the results of the 2007 examinations. This part displays the numbers of those passing and failing by region, and the national grade distributions and cutoff scores. Further, this part surveys success in the renewal of tests of those previously failing. The statistics on the placement of graduates in further (tertiary) studies are found at the end of this part. The third and final part (4) gives the composition of the membership of the Board, starting with those in office in 2007 by region of residence, age, sex and academic degree. In addition, all of the decisions made by the Board are demonstrated by category.

For 2007, the individual tests in the matriculation examination were partially renewed. A new 2-section Finnish or Swedish mother-tongue test, long under preparation, was adopted. Another significant reform was to add a health education test to the 2006 group of general studies tests. The A-level mathematics test was reworked by adding two clearly more demanding special tasks to improve test differentiation. The section dealing with the reforms (2.2) discusses the results and potential explanations of these changes in a comprehensive manner.

The media increasingly attach attention to the academic success of candidates from various schools. This publication studies the 2007 distribution of graduates' scores by region. The distribution is very even: the difference between the most and least successful regions was less than a quarter of a grade level.

The statistics dealing with the placement of graduates in further studies (3.3) differ significantly from the rest of the tables in that their information ends with 2006 at the latest, a result of the fact that the statistics obtained from Statistics Finland are published with a delay of a year.

*Samuli Vilkman*

Registrar

The Matriculation Examination Board

# Definitions of terms

This section covers the major terms employed. In the tables in this publication if no further delineation is made, the tables survey the entire group, eg. all the candidates together. In case some information is missing or there are no observations in a particular classification, the table remains empty for that part.

## *Upper Secondary School*

An educational facility offering upper-secondary education, arranged in regular upper secondary schools, adult education schools and other educational facilities.

## *Youth Education*

This category incorporates all candidates, excluding only those from adult education (either evening schools, or evening branches of regular day schools). These are primarily candidates for the examination from regular day schools, ie. upper secondary schools.

## *Adult education*

Candidates for the examination from evening schools or evening branches of day schools (in Finnish these schools are called adult education schools).

## *Grade*

The grades awarded on the matriculation examination and the corresponding points are as follows:

laudatur (L)	7
eximia cum laude approbatur (E)	6
magna cum laude approbatur (M)	5
cum laude approbatur (C)	4
lubenter approbatur (B)	3
approbatur (A)	2
improbatur (I)	0

## *Points*

See above.

## *Categories of candidates*

Candidates, ie. examinees, participating in the matriculation examination are divided according to the classification of the Matriculation Examination Board into the following candidate categories:

### 01 regular candidate

- candidate taking the entire examination, but not on the basis of a vocational qualification or vocational studies.
- the majority of candidates taking the examination are in this category.

### 02 private candidate

- candidate who has completed the upper secondary school curriculum as a private student (not then participating in courses in a school) or who is repeating the entire examination.
- restarting the exam may be based on the fact that the candidate did not pass the entire examination in the given time, or that upon application the Board granted the candidate the right to retake the whole examination.

### 03 vocational school

- candidate with a vocational qualification or upon completion of vocational studies.
- the candidate taking the entire examination on the basis of a vocational qualification or vocational studies.

### 04 renewing a failed compulsory test

- candidate renewing a failed compulsory test.
- the category also includes candidates renewing the failed test, now taken at a lower level.

### 05 renewing a passed test

- candidate renewing an already passed test, attempting an improved grade.

- 06** complementing the exam
- candidate supplementing the previously completed entire examination.
  - a graduate who wishes to add an extra test not previously taken, or a previously passed test, now taken at a different level
- 07** renewing a failed test
- renewer of a compulsory failed test when compensated (see the definition of compensation).
- 08** renewing a failed optional test
- renewer of a failed supplementary test.
- 09** sitting a separate test
- candidate taking a separate test.
  - by taking separate tests the candidate cannot receive a Matriculation Examination Certificate.
- 10** joint certification
- candidate studying the upper secondary school certificate and a vocational qualification simultaneously.

### *Swedish and Finnish speaking students*

The candidate is classified in these two national languages according to the language of instruction in the school where the examination is taken.

### *Compensation*

If a candidate fails in one compulsory test, the Board can still grant a Matriculation Examination Certificate in cases where the grades of the other tests are sufficiently high, which procedure is termed compensation.

### *Age*

The candidate's age at the end of the year in question.

### *Examination period*

Two examination periods are arranged annually, ie. in spring and in autumn. Each period includes multiple tests which take place over approximately two months.

### *Spacing out of the exam*

Candidates who have taken the tests in their examinations so that they are divided out over more than one examination (exam) period.

### *Single-period candidate*

A candidate who takes all four compulsory tests during one examination period.

### *Graduate*

A graduate is a student who has successfully passed the entire Matriculation Examination, and receives an upper-secondary school-leaving certificate or a diploma upon completing vocational certificate studies. In this text whenever the term 'graduate' appears without further explanation, it denotes a graduate in this sense.

### *Graduate, ie. one who passed the entire examination*

The Matriculation Examination is regarded as approved when the candidate has passed four compulsory tests. The candidate's examination may include supplementary tests as well. If the candidate fails in one compulsory test, the Board may grant the Matriculation Examination Certificate if the other test scores in the examination are sufficiently high, which procedure is termed compensation.

### *Applicants*

In this material applicants are those who upon graduation submit their applications within the joint application system primarily to tertiary education degree programmes, beginning in 2006. Those who commenced their further education in 2006 but were not in the joint application system of 2006 are also included in the statistics as applicants.

Applicant also denotes individuals who in 2006 applied for higher education in the joint application system or separately for the polytechnics, and those who sent in application forms to university selection bodies for degree programmes in that year. The same person can apply to several selection bodies both in the joint application system of the polytech-



tics and from outside this system, and in the regular and in special university selection processes.

### ***University education***

Education offered at universities and colleges comprising both lower (bachelor) and higher (master) degree programmes, medical school for specialisation as well as students on pre-doctoral (licentiate) and doctoral programmes. The student information is updated to 20 Sept. of that year. New students (from the university point of view) generally means those who have started either lower or higher degree studies, enrolled by 20 Sept. 2006.

### ***Polytechnic education***

Upper secondary education leading towards a polytechnic qualification. The student information depicts those students pursuing degrees as of 20 Sept. 2006. The term new students means those in degree programmes or further-education students on that date and those students accepting a position in these programmes 1 Jan.–20 Sept. 2006 who had registered either present or absent for the first time at the school.

### ***Upper secondary vocational education and training***

Vocational education leading to a qualification and further education leading to certification. Those included in this group were enrolled on 20 Sept. 2006. Before 2006 the number of students from the entire calendar year was used in this category.

The term new students means those studying on 20 Sept. 2006 who had registered at that school for certificate programmes 1 Jan.–20 Sept. 2006.

### ***Year***

The year during which the event recorded transpires.

### ***Cutoff points***

The cutoff points for each grade in each subject test indicate the minimum number of points a candidate is to achieve in order to obtain the grade in question.

### ***Region***

Information is collected by regions, ie. subdivisions of provinces, the candidates who participate from these regions.

### ***Readers***

The readers of the Board analyse all test productions and assign points in accordance with the criteria of the Matriculation Examination Board.

### ***Board Members and associate members***

In 2007 the Matriculation Examination Board was made up of 38 members appointed by the Ministry of Education, with also about 360 associate members, who mostly work as assessors of test performances, ie. as readers.

- ▶ *Further information on the Matriculation Examination Board is found on the website [www.ylioppilastutkinto.fi](http://www.ylioppilastutkinto.fi).*

# STATISTICS ON THE MATRICULATION EXAMINATION

## 2. Candidates

### 2.1. Registration

An examination of the registrations for the Matriculation Examination 1998–2007 demonstrates that the total number of annual registrations rose rapidly until the turn of the millennium. This phenomenon is easily explicable in light of the fact that it became possible to space out the taking of the examination over three consecutive examination periods from the spring of 1996 onwards.

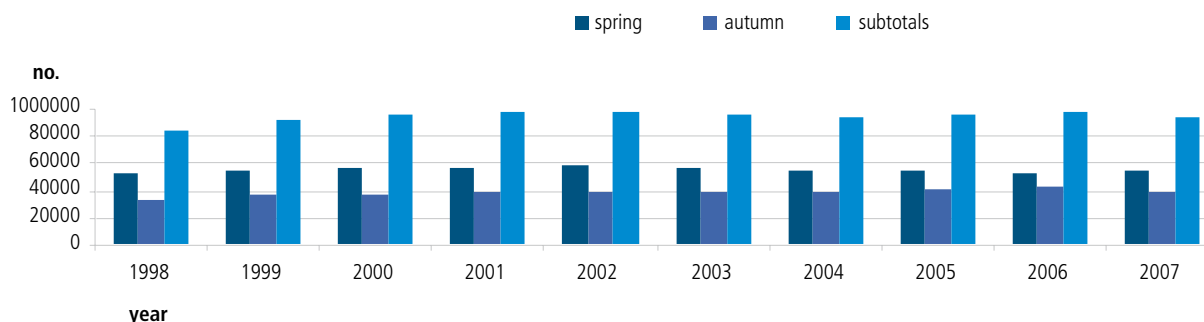
The total of those registering after 2000 has remained rather stable, an annual level of some 95,000. On the other hand, the numbers of spring and autumn registrations have undergone marked changes. The spring examination registrations keep decreasing, whereas an increasing number of candidates register for the autumn examination period. The closing of the gap in registration numbers may be a result of the possibility for the spacing out of individual tests. Within the time span under scrutiny, each year some 60% of the candidates are female, the male students making up the balance, ie. 40%.

The registration numbers in 1998–2007 for the largest category, regular candidate, indicates that

the annual share of this category has remained fairly much the same, two-thirds of the registrations (see Table 2.1.1). Proportionately, the largest increase is seen in the candidates aiming at the dual certification, upper secondary school certificate and vocational school qualification. The former category 10, candidates in youth education doing combination studies, was changed into the current category 10 which has candidates aiming at both the upper-secondary certificate and a vocational qualification.

The annual registrations for various tests has remained nearly the same (see Table 2.1.2). Further, the tests with the largest numbers of candidates have stayed close to the previous levels, with the exception of B-level, ie. intermediate, Swedish, whose registrations have lowered since the test was made optional in the spring of 2005. The numbers of both Finnish and Swedish mother-tongue tests dropped for 2007, but since they are compulsory for all candidates, this change is simply temporary due to the reform in the structure of the test.

FIG. 2.1.1 Registrations in the matriculation examination, 1998–2007.



*The number of registrations in the Matriculation Examination grew strongly until the turn of the millennium, after which it has remained relatively stable.*

**TABLE 2.1.1** Examinees in the Matriculation Examination, by candidate category, 1998–2007.

category of examinees		1998	1999	2000	2001	2002	2003	2004	2005	2006	2007
<i>regular candidate</i>											
spring exam	no.	38 032	37 894	38 279	38 344	38 320	37 444	36 768	35 782	34 755	35 112
	%	73.0	69.1	66.6	66.4	66.2	65.8	66.5	65.4	64.7	65.3
autumn exam	no.	19 665	22 890	24 222	25 720	26 724	26 951	26 707	27 353	29 831	28 843
	%	59.4	62.9	63.8	65.1	67.1	67.3	68.7	67.6	68.2	65.9
subtotal	no.	57 697	60 784	62 501	64 064	65 044	64 395	63 475	63 135	64 586	63 955
	%	67.7	66.6	65.5	65.8	66.6	66.4	67.4	66.3	66.2	65.6
male	%	40.4	39.6	40.4	40.5	40.4	40.3	40.7	41.3	41.6	41.6
female	%	59.6	60.4	59.6	59.5	59.6	59.7	59.3	58.7	58.4	58.4
<i>private candidate</i>											
spring exam	no.	249	285	307	335	394	402	394	451	374	370
	%	0.5	0.5	0.5	0.6	0.7	0.7	0.7	0.8	0.7	0.7
autumn exam	no.	228	228	248	270	284	284	317	318	339	265
	%	0.7	0.6	0.7	0.7	0.7	0.7	0.8	0.8	0.8	0.6
subtotal	no.	477	513	555	605	678	686	711	769	713	635
	%	0.6	0.6	0.6	0.6	0.7	0.7	0.8	0.8	0.7	0.7
male	%	35.2	36.5	45.6	40.0	39.8	47.8	46.0	51.5	49.1	44.1
female	%	64.8	63.5	54.4	60.0	60.2	52.2	54.0	48.5	50.9	55.9
<i>vocational school</i>											
spring exam	no.	743	1 032	1 197	1 311	1 607	1 590	1 605	1 648	1 540	1 430
	%	1.4	1.9	2.1	2.3	2.8	2.8	2.9	3.0	2.9	2.7
autumn exam	no.	668	700	784	993	1 062	1 034	1 117	1 256	1 171	1 095
	%	2.0	1.9	2.1	2.5	2.7	2.6	2.9	3.1	2.7	2.5
subtotal	no.	1 411	1 732	1 981	2 304	2 669	2 624	2 722	2 904	2 711	2 525
	%	1.7	1.9	2.1	2.4	2.7	2.7	2.9	3.1	2.8	2.6
male	%	35.0	38.3	38.4	37.8	40.8	38.8	38.8	37.5	38.4	38.5
female	%	65.0	61.7	61.6	62.2	59.2	61.2	61.2	62.5	61.6	61.5
<i>renewing a failed compulsory test</i>											
spring exam	no.	1 422	1 692	2 297	1 980	2 270	2 140	2 157	2 095	2 338	2 285
	%	2.7	3.1	4.0	3.4	3.9	3.8	3.9	3.8	4.4	4.3
autumn exam	no.	1 927	2 252	2 106	2 275	2 415	2 367	2 388	2 579	2 669	2 539
	%	5.8	6.2	5.6	5.8	6.1	5.9	6.1	6.4	6.1	5.8
subtotal	no.	3 349	3 944	4 403	4 255	4 685	4 507	4 545	4 674	5 007	4 824
	%	3.9	4.3	4.6	4.4	4.8	4.6	4.8	4.9	5.1	4.9
male	%	49.9	50.5	50.9	50.6	51.2	54.1	52.4	49.9	48.7	49.7
female	%	50.1	49.5	49.1	49.4	48.8	45.9	47.6	50.1	51.3	
<i>renewing a passed test</i>											
spring exam	no.	10 198	12 431	13 800	14 100	13 639	13 861	13 002	13 433	13 140	13 183
	%	19.6	22.7	24.0	24.4	23.5	24.4	23.5	24.6	24.4	24.5
autumn exam	no.	8 900	8 700	8 851	8 545	7 796	7 860	7 106	7 694	7 767	5 187
	%	26.9	23.9	23.3	21.6	19.6	19.6	18.3	19.0	17.7	11.9
subtotal	no.	19 098	21 131	22 651	22 645	21 435	21 721	20 108	21 127	20 907	18 370
	%	22.4	23.2	23.7	23.3	21.9	22.4	21.4	22.2	21.4	18.8
male	%	39.1	39.6	38.9	39.6	38.4	41.2	39.2	39.7	39.9	38.6
female	%	60.9	60.4	61.1	60.4	61.6	58.8	60.8	60.3	60.1	61.4

category of examinees		1998	1999	2000	2001	2002	2003	2004	2005	2006	2007
<i>06 complementing the exam</i>											
spring exam	no.	910	851	812	849	769	731	719	713	772	1 055
	%	1.7	1.6	1.4	1.5	1.3	1.3	1.3	1.3	1.4	2.0
autumn exam	no.	918	783	810	699	683	648	539	571	867	726
	%	2.8	2.2	2.1	1.8	1.7	1.6	1.4	1.4	2.0	1.7
subtotal	no.	1 828	1 634	1 622	1 548	1 452	1 379	1 258	1 284	1 639	1 781
	%	2.1	1.8	1.7	1.6	1.5	1.4	1.3	1.3	1.7	1.8
male	%	30.2	30.0	33.8	34.4	36.2	34.7	34.3	34.9	38.1	36.8
female	%	69.8	70.0	66.2	65.6	63.8	65.3	65.7	65.1	61.9	63.2
<i>07 renewing a failed test</i>											
spring exam	no.	52	61	67	61	62	52	62	60	60	48
	%	0.1	0.1	0.1	0.1	0.1	0.1	0.1	0.1	0.1	0.1
autumn exam	no.	172	150	139	196	163	164	114	169	171	163
	%	0.5	0.4	0.4	0.5	0.4	0.4	0.3	0.4	0.4	0.4
subtotal	no.	224	211	206	257	225	216	176	229	231	211
	%	0.3	0.2	0.2	0.3	0.2	0.2	0.2	0.2	0.2	0.2
male	%	58.5	53.6	49.5	50.2	52.9	63.9	52.3	54.1	54.5	47.9
female	%	41.5	46.4	50.5	49.8	47.1	36.1	47.7	45.9	45.5	52.1
<i>08 renewing a failed optional test</i>											
spring exam	no.	267	312	388	421	459	422	324	315	332	316
	%	0.5	0.6	0.7	0.7	0.8	0.7	0.6	0.6	0.6	0.6
autumn exam	no.	490	513	511	619	460	499	400	351	402	316
	%	1.5	1.4	1.3	1.6	1.2	1.2	1.0	0.9	0.9	0.7
subtotal	no.	757	825	899	1 040	919	921	724	666	734	632
	%	0.9	0.9	0.9	1.1	0.9	1.0	0.8	0.7	0.8	0.6
male	%	52.2	48.6	47.9	51.6	52.6	50.1	49.7	45.8	46.5	47.8
female	%	47.8	51.4	52.1	48.4	47.4	49.9	50.3	54.2	53.5	52.2
<i>09 sitting a separate test</i>											
spring exam	no.	178	193	196	145	166	115	152	121	147	150
	%	0.3	0.4	0.3	0.3	0.3	0.2	0.3	0.2	0.3	0.3
autumn exam	no.	91	104	119	114	125	148	153	182	160	110
	%	0.3	0.3	0.3	0.3	0.3	0.4	0.4	0.4	0.4	0.3
subtotal	no.	269	297	315	259	291	263	305	303	307	260
	%	0.3	0.3	0.3	0.3	0.3	0.3	0.3	0.3	0.3	0.3
male	%	36.4	31.6	39.4	39.0	39.5	36.9	38.7	44.2	40.1	42.7
female	%	63.6	68.4	60.6	61.0	60.5	63.1	61.3	55.8	59.9	57.3
<i>10 joint certification**</i>											
spring exam	no.	51	76	133	227	240	165	106	64	286	712
	%	0.1	0.1	0.2	0.4	0.4	0.3	0.2	0.1	0.5	1.3
autumn exam	no.	25	78	155	106	91	69	44	2	386	532
	%	0.1	0.2	0.4	0.3	0.2	0.2	0.1	0.0	0.9	1.2
subtotal	no.	76	154	288	333	331	234	150	66	672	1 244
	%	0.1	0.2	0.3	0.3	0.3	0.2	0.2	0.1	0.7	1.3
male	%	52.6	43.5	46.2	38.7	33.5	29.5	38.0	45.5	46.9	43.2
female	%	47.4	56.5	53.8	61.3	66.5	70.5	62.0	54.5	53.1	56.8
<b>EXAMINEES: SUBTOTALS</b>											
spring exam*		52 102	54 827	57 476	57 773	57 926	56 922	55 289	54 682	53 744	54 661
autumn exam*		33 084	36 398	37 945	39 537	39 803	40 024	38 885	40 475	43 763	39 776
<b>totals*</b>		<b>85 186</b>	<b>91 225</b>	<b>95 421</b>	<b>97 310</b>	<b>97 729</b>	<b>96 946</b>	<b>94 174</b>	<b>95 157</b>	<b>97 507</b>	<b>94 437</b>
male*	%	40.3	40.0	40.5	40.7	40.6	41.1	40.9	41.3	41.6	43.0
female*	%	59.7	60.1	59.5	59.3	59.4	58.9	59.1	58.7	58.4	57.0

\*The same examinee may appear simultaneously under several categories.

\*\*Until autumn 2005 these examinees were in the category of regular candidates, and completing a combination of certificates.

**TABLE 2.1.2** Registration in various tests by examination period, 1998–2007.

test	1998	1999	2000	2001	2002	2003	2004	2005	2006	2007
<i>mother tongue, Finnish</i>										
spring exam	33 699	32 958	33 351	33 388	33 803	32 883	32 149	31 093	30 039	23 178
autumn exam	8 487	9 240	10 030	9 941	9 517	9 174	8 961	9 037	16 923	5 969
subtotals	42 186	42 198	43 381	43 329	43 320	42 057	41 110	40 130	46 962	29 147
male %	41.8	41.2	41.6	42.1	41.4	42.2	42.0	42.7	42.0	42.6
female %	58.2	58.8	58.4	57.9	58.6	57.8	58.0	57.3	58.0	57.4
<i>mother tongue, Swedish</i>										
spring exam	2 152	2 104	2 070	2 118	2 148	2 148	2 203	2 089	2 157	1 898
autumn exam	392	380	345	353	366	436	405	439	755	368
subtotals	2 544	2 484	2 415	2 471	2 514	2 584	2 608	2 528	2 912	2 266
male %	41.4	36.7	40.0	43.1	43.7	44.1	42.6	44.8	41.7	43.4
female %	58.6	63.3	60.0	56.9	56.3	55.9	57.4	55.2	58.3	56.6
<i>mother tongue, Northern Sami</i>										
spring exam	8	9	5	4	6	1	10	5	6	8
autumn exam	2	5	1	5	4	5	6	2	5	6
subtotals	10	14	6	9	10	6	16	7	11	14
male %	20.0	7.1		44.4	30.0	66.7	50.0	14.3	45.5	14.3
female %	80.0	92.9	100.0	55.6	70.0	33.3	50.0	85.7	54.5	85.7
<i>Swedish, A-level</i>										
spring exam	3 054	2 584	2 331	1 946	1 836	2 002	2 045	1 995	1 974	2 042
autumn exam	1 168	1 239	1 082	1 032	1 176	1 338	1 354	1 353	1 206	1 159
subtotals	4 222	3 823	3 413	2 978	3 012	3 340	3 399	3 348	3 180	3 201
male %	27.6	26.7	26.0	27.5	25.6	26.5	30.4	28.5	27.7	28.3
female %	72.4	73.3	74.0	72.5	74.4	73.5	69.6	71.5	72.3	71.7
<i>Swedish, B-level</i>										
spring exam	27 284	25 863	25 640	24 135	23 947	21 406	20 045	17 180	14 851	13 819
autumn exam	8 644	11 321	12 616	14 135	15 146	15 419	15 077	12 838	11 866	10 766
subtotals	35 928	37 184	38 256	38 270	39 093	36 825	35 122	30 018	26 717	24 585
male %	42.4	42.2	42.5	42.5	42.7	42.5	41.9	39.7	35.9	33.9
female %	57.6	57.8	57.5	57.5	57.3	57.5	58.1	60.3	64.1	66.1
<i>Finnish, A-level</i>										
spring exam	1 516	1 506	1 427	1 325	1 359	1 300	1 273	1 183	1 163	1 133
autumn exam	918	972	1 084	1 112	1 253	1 274	1 269	1 331	1 403	1 309
subtotals	2 434	2 478	2 511	2 437	2 612	2 574	2 542	2 514	2 566	2 442
male %	42.9	41.6	43.1	43.8	44.2	44.1	44.3	43.9	43.0	43.4
female %	57.1	58.4	56.9	56.2	55.8	55.9	55.7	56.1	57.0	56.6
<i>Finnish, B-level</i>										
spring exam	390	374	406	380	366	344	343	348	314	231
autumn exam	102	130	203	212	210	228	228	260	250	286
subtotals	492	504	609	592	576	572	571	608	564	517
male %	38.8	36.3	36.1	39.5	37.8	38.6	32.9	36.0	34.2	34.4
female %	61.2	63.7	63.9	60.5	62.2	61.4	67.1	64.0	65.8	65.6
<i>English, A-level</i>										
spring exam	33 025	31 660	31 809	31 384	30 602	29 609	28 776	27 575	26 327	26 148
autumn exam	12 024	13 932	14 815	15 888	16 599	16 398	16 674	16 018	16 389	15 365
subtotals	45 049	45 592	46 624	47 272	47 201	46 007	45 450	43 593	42 716	41 513
male %	40.9	40.4	41.6	41.3	41.3	41.7	42.1	42.6	42.6	43.1
female %	59.1	59.6	58.4	58.7	58.7	58.3	57.9	57.4	57.4	56.9

test	1998	1999	2000	2001	2002	2003	2004	2005	2006	2007
<i>French, A-level</i>										
spring exam	253	259	280	289	336	384	370	437	432	404
autumn exam	87	92	95	69	75	94	83	100	102	109
subtotals	340	351	375	358	411	478	453	537	534	513
male %	30.9	29.6	30.4	26.5	32.8	29.9	23.2	25.5	23.6	22.0
female %	69.1	70.4	69.6	73.5	67.2	70.1	76.8	74.5	76.4	78.0
<i>Spanish, A-level</i>										
spring exam								15	30	29
autumn exam								5	24	24
subtotals								20	54	53
male %								35.0	13.0	26.4
female %								65.0	87.0	73.6
<i>German, A-level</i>										
spring exam	400	443	510	630	862	1 251	1 447	1 465	1 212	1 141
autumn exam	179	191	186	280	497	607	621	633	549	493
subtotals	579	634	696	910	1 359	1 858	2 068	2 098	1 761	1 634
male %	33.5	27.9	30.7	33.8	33.8	29.0	26.9	30.1	27.5	29.9
female %	66.5	72.1	69.3	66.2	66.2	71.0	73.1	69.9	72.5	70.1
<i>Russian, A-level</i>										
spring exam	168	157	125	110	127	145	144	195	205	217
autumn exam	103	106	85	83	86	113	136	143	140	154
subtotals	271	263	210	193	213	258	280	338	345	371
male %	36.5	30.8	41.0	37.3	36.6	32.9	32.5	34.3	33.6	34.5
female %	63.5	69.2	59.1	62.7	63.4	67.1	67.5	65.7	66.4	65.5
<i>Northern Sami, C-level</i>										
spring exam	25	17	13	17	13	16	11	17	8	5
autumn exam	8	6	7	4	2	7	2	8	3	6
subtotals	33	23	20	21	15	23	13	25	11	11
male %	18.2	13.0	25.0	28.6	6.7	43.5	23.1	24.0	18.2	9.1
female %	81.8	87.0	75.0	71.4	93.3	56.5	76.9	76.0	81.8	90.9
<i>English, C-level</i>										
spring exam	1 197	977	878	809	758	751	732	704	648	615
autumn exam	369	372	364	386	360	333	366	370	322	351
subtotals	1 566	1 349	1 242	1 195	1 118	1 084	1 098	1 074	970	966
male %	46.7	41.9	46.8	48.2	42.0	43.1	41.6	43.9	45.1	44.8
female %	53.3	58.1	53.2	51.8	58.0	56.9	58.4	56.1	54.9	55.2
<i>French, C-level</i>										
spring exam	3 724	3 351	3 557	3 314	3 283	2 807	2 643	2 364	2 327	2 010
autumn exam	602	701	632	597	547	511	453	404	388	369
subtotals	4 326	4 052	4 189	3 911	3 830	3 318	3 096	2 768	2 715	2 379
male %	15.7	14.9	15.8	17.0	16.3	16.7	16.9	17.0	16.5	13.9
female %	84.3	85.1	84.2	83.1	83.7	83.3	83.1	83.0	83.5	86.1
<i>Portuguese, C-level</i>										
spring exam	7	17	17	15	23	25	23	18	21	14
autumn exam	11	15	15	17	10	15	17	11	7	17
subtotals	18	32	32	32	33	40	40	29	28	31
male %	16.7	18.8	21.9	15.6	24.2	10.0	15.0	3.4	21.4	35.5
female %	83.3	81.3	78.1	84.4	75.8	90.0	85.0	96.6	78.6	64.5

test	1998	1999	2000	2001	2002	2003	2004	2005	2006	2007
<i>Latin, C-level</i>										
spring exam	74	75	59	85	76	95	118	98	97	87
autumn exam	38	46	38	43	53	33	55	36	41	19
subtotals	112	121	97	128	129	128	173	134	138	106
male %	22.3	34.7	32.0	32.0	22.5	23.4	31.2	39.6	29.7	30.2
female %	77.7	65.3	68.0	68.0	77.5	76.6	68.8	60.4	70.3	69.8
<i>Latin, broader syllabus</i>										
spring exam	14	14	22	10	15	19	15	4	12	7
autumn exam	13	31	7	13	6	9	13	13	13	7
subtotals	27	45	29	23	21	28	28	17	25	14
male %	48.1	33.3	41.4	26.1	33.3	42.9	46.4	52.9	40.0	50.0
female %	51.9	66.7	58.6	73.9	66.7	57.1	53.6	47.1	60.0	50.0
<i>Spanish, C-level</i>										
spring exam	398	498	478	596	607	637	725	889	832	920
autumn exam	149	194	205	226	271	209	241	212	206	233
subtotals	547	692	683	822	878	846	966	1 101	1 038	1 153
male %	14.4	15.8	18.7	14.2	14.7	16.7	16.5	16.1	15.8	17.0
female %	85.6	84.2	81.3	85.8	85.3	83.3	83.5	83.9	84.2	83.0
<i>German, C-level</i>										
spring exam	8 729	7 625	6 934	6 806	6 402	5 647	5 425	4 693	4 006	3 502
autumn exam	1 839	1 838	1 782	1 724	1 663	1 705	1 472	1 283	1 051	902
subtotals	10 568	9 463	8 716	8 530	8 065	7 352	6 897	5 976	5 057	4 404
male %	29.4	28.2	27.8	29.3	27.9	28.7	27.8	29.6	28.2	31.1
female %	70.6	71.8	72.2	70.7	72.1	71.3	72.2	70.4	71.8	68.9
<i>Italian, C-level</i>										
spring exam	198	178	172	179	215	187	219	210	210	209
autumn exam	64	90	88	80	94	48	64	81	72	74
subtotals	262	268	260	259	309	235	283	291	282	283
male %	6.9	7.8	11.2	13.1	15.5	8.5	13.1	14.4	15.6	14.8
female %	93.1	92.2	88.8	86.9	84.5	91.5	86.9	85.6	84.4	85.2
<i>Russian, C-level</i>										
spring exam	635	645	675	752	645	495	420	405	427	450
autumn exam	106	119	159	132	111	94	120	88	68	87
subtotals	741	764	834	884	756	589	540	493	495	537
male %	19.6	23.3	22.3	21.6	24.5	24.8	27.0	27.6	28.5	23.8
female %	80.4	76.7	77.7	78.4	75.5	75.2	73.0	72.4	71.5	76.2
<i>mathematics, A-level</i>										
spring exam	12 460	12 379	12 822	13 117	13 348	12 919	12 668	12 385	11 727	11 892
autumn exam	2 153	2 033	2 264	2 271	1 942	2 369	1 872	1 955	1 879	1 456
subtotals	14 613	14 412	15 086	15 388	15 290	15 288	14 540	14 340	13 606	13 348
male %	62.6	60.8	59.5	59.9	59.1	58.1	56.1	57.1	57.2	55.7
female %	37.4	39.2	40.5	40.1	40.9	41.9	43.9	42.9	42.8	44.3
<i>mathematics, C-level</i>										
spring exam	15 167	14 532	14 585	14 724	14 661	14 256	13 441	14 336	13 725	13 901
autumn exam	4 746	5 244	5 501	6 191	5 894	5 776	6 055	5 927	6 075	5 640
subtotals	19 913	19 776	20 086	20 915	20 555	20 032	19 496	20 263	19 800	19 541
male %	37.2	37.6	38.7	38.7	38.0	39.5	39.6	41.3	43.4	43.7
female %	62.8	62.4	61.3	61.3	62.0	60.5	60.4	58.7	56.6	56.3



test	1998	1999	2000	2001	2002	2003	2004	2005	2006	2007
<i>philosophy</i>										
spring exam									922	993
autumn exam									837	799
subtotals									1 759	1 792
male %									45.9	46.9
female %									54.1	53.1
<i>psychology</i>										
spring exam									6 349	6 775
autumn exam									2 818	3 076
subtotals									9 167	9 851
male %									17.0	17.7
female %									83.0	82.3
<i>history</i>										
spring exam									6 288	5 884
autumn exam									3 611	3 953
subtotals									9 899	9 837
male %									59.6	59.4
female %									40.4	40.6
<i>physics</i>										
spring exam									4 220	5 049
autumn exam									838	765
subtotals									5 058	5 814
male %									82.2	79.6
female %									17.8	20.4
<i>biology</i>										
spring exam									4 633	4 565
autumn exam									3 203	3 050
subtotals									7 836	7 615
male %									31.8	33.0
female %									68.2	67.0
<i>Evangelical-Lutheran religion</i>										
spring exam									3 969	3 393
autumn exam									1 977	1 704
subtotals									5 946	5 097
male %									22.3	25.0
female %									77.7	75.0
<i>Orthodox religion</i>										
spring exam									39	38
autumn exam									23	20
subtotals									62	58
male %									30.6	25.9
female %									69.4	74.1
<i>general ethics</i>										
spring exam									246	225
autumn exam									150	119
subtotals									396	344
male %									34.1	34.9
female %									65.9	65.1

test	1998	1999	2000	2001	2002	2003	2004	2005	2006	2007
<i>social studies</i>										
spring exam									3 338	3 602
autumn exam									905	1 629
subtotals									4 243	5 231
male %									50.1	51.3
female %									49.9	48.7
<i>chemistry</i>										
spring exam									3 853	4 173
autumn exam									1 551	1 549
subtotals									5 404	5 722
male %									58.8	57.9
female %									41.2	42.1
<i>geography</i>										
spring exam									5 712	4 924
autumn exam									3 257	2 966
subtotals									8 969	7 890
male %									49.9	52.5
female %									50.1	47.5
<i>health education</i>										
spring exam										4 550
autumn exam										3 612
subtotals										8 162
male %										22.0
female %										78.0
<i>Swedish as a second language</i>										
spring exam	9	6	9	4	5	4	6	2	2	3
autumn exam	2	2	4	1	2	1	2		1	2
subtotals	11	8	13	5	7	5	8	2	3	5
male %	54.5	25.0	0.0	20.0	42.9	20.0	75.0	50.0	0.0	60.0
female %	45.5	75.0	100.0	80.0	57.1	80.0	25.0	50.0	100.0	40.0
<i>Finnish as a second language</i>										
spring exam	112	144	204	209	239	269	291	333	334	360
autumn exam	67	89	106	100	113	124	138	176	186	179
subtotals	179	233	310	309	352	393	429	509	520	539
male %	41.9	43.3	47.1	44.7	46.6	41.7	39.4	41.3	45.0	43.0
female %	58.1	56.7	52.9	55.3	53.4	58.3	60.6	58.7	55.0	57.0
<b>REGISTRATIONS IN VARIOUS TESTS: SUBTOTALS</b>										
spring exam	178 772	171 312	172 156	170 008	169 520	162 541	157 970	152 340	152 658	148 396
autumn exam	51 350	57 375	60 977	63 696	64 349	64 371	62 996	66 919	79 039	68 592
<b>totals</b>	<b>230 122</b>	<b>228 687</b>	<b>233 133</b>	<b>233 704</b>	<b>233 869</b>	<b>226 912</b>	<b>220 966</b>	<b>219 259</b>	<b>231 697</b>	<b>216 988</b>
male %	41.2	40.7	41.2	41.6	41.2	41.8	41.4	41.8	41.9	41.6
female %	58.8	59.3	58.8	58.4	58.8	58.2	58.6	58.2	58.1	58.4

## 2.2 Reforms of the examination

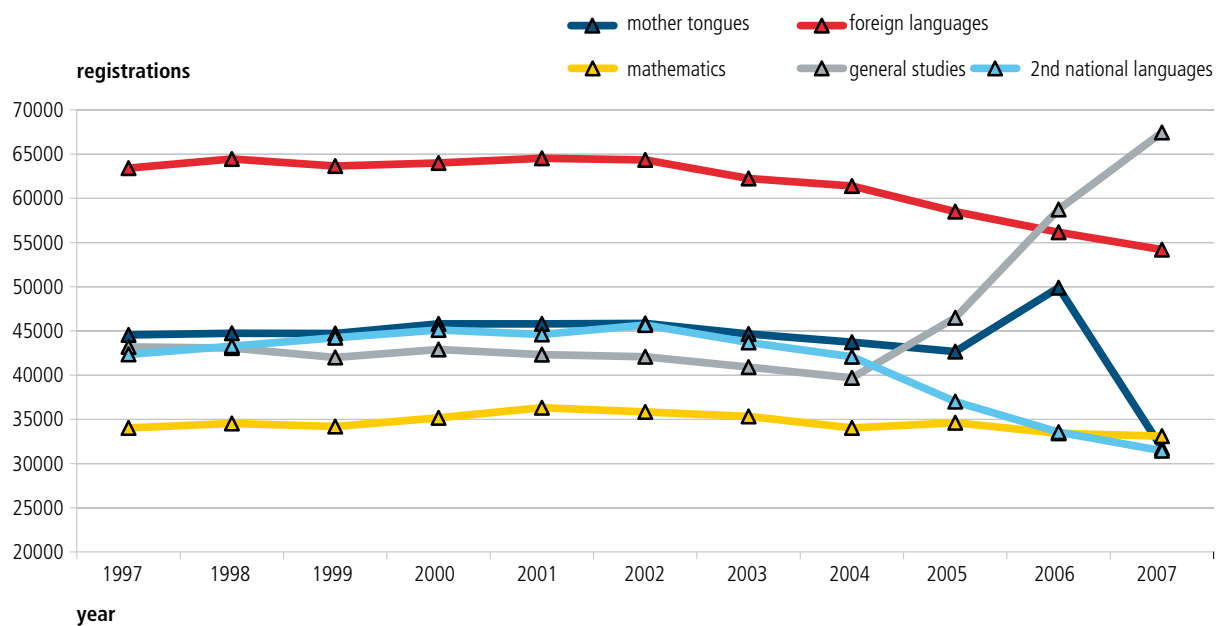
In the spring of 2007 the Matriculation Examination adopted a two-part mother-tongue test, long under deliberation. Another remarkable reform was the addition to the general studies group of tests of a test in health education. Finally, the A-level, advanced, mathematics test was renewed by adding two clearly more demanding special tasks in order to improve the distribution of the scores.

The Matriculation Examination has undergone a great many reforms in recent years, thus it is interesting to study how these changes have affected the numbers of registrations in the tests, as grouped by subject matter. Fig. 2.2.1 exhibits these effects. The 2005 change in the total examination structure enabled candidates to drop one of the following from the examination: general studies, mathematics, the second national language or the foreign language. The next significant reform in the examination structure was to replace the battery of general studies tests, which allowed the candidates to make choices only in the testing situation itself, with a group of individual tests, the tests in which are chosen by the

candidates beforehand. The subjects in these tests remained the same as in the earlier battery. This change has affected an enormous growth of popularity, so the general studies group of tests has clearly bypassed foreign languages to assume the position of the most popular group of tests. The desirability of foreign languages has slightly declined in recent years, possibly due to the growth in the popularity of these general studies tests. The mother-tongue tests have seen great fluctuations in participation in recent years, but since the test is compulsory for all candidates, this may simply mean that candidates wished to take the old type of mother-tongue test in 2006 while it was still possible, thus lowering the number of candidates in 2007. In the long run the registrations of those taking mother-tongue tests will hardly be subjected to considerable changes.

The mother-tongue tests, Finnish and Swedish (see Table 2.2.1 f.), were divided into an essay subtest, this corresponding to the traditional one, as well as a new textual skills subtest with the intention of measuring the candidate's critical and culture

FIG. 2.2.1 Registrations in tests by subject group 1997–2007



*The total structure of the Matriculation Examination, in addition to the individual tests, has gone through a variety of changes in recent years. This has had a great impact on the number of candidates in various subject groups, the greatest of these being the 2005 reforms of the general studies test and the examination structure.*

literacy and linguistic expression skills. Before the adoption of the renewed mother-tongue test, several experts conjectured that the new textual skills subtest would even out differences in scores between male and female candidates. Yet when analysed, the new textual skills subtest proved to favour female candidates even more than the traditional essay.

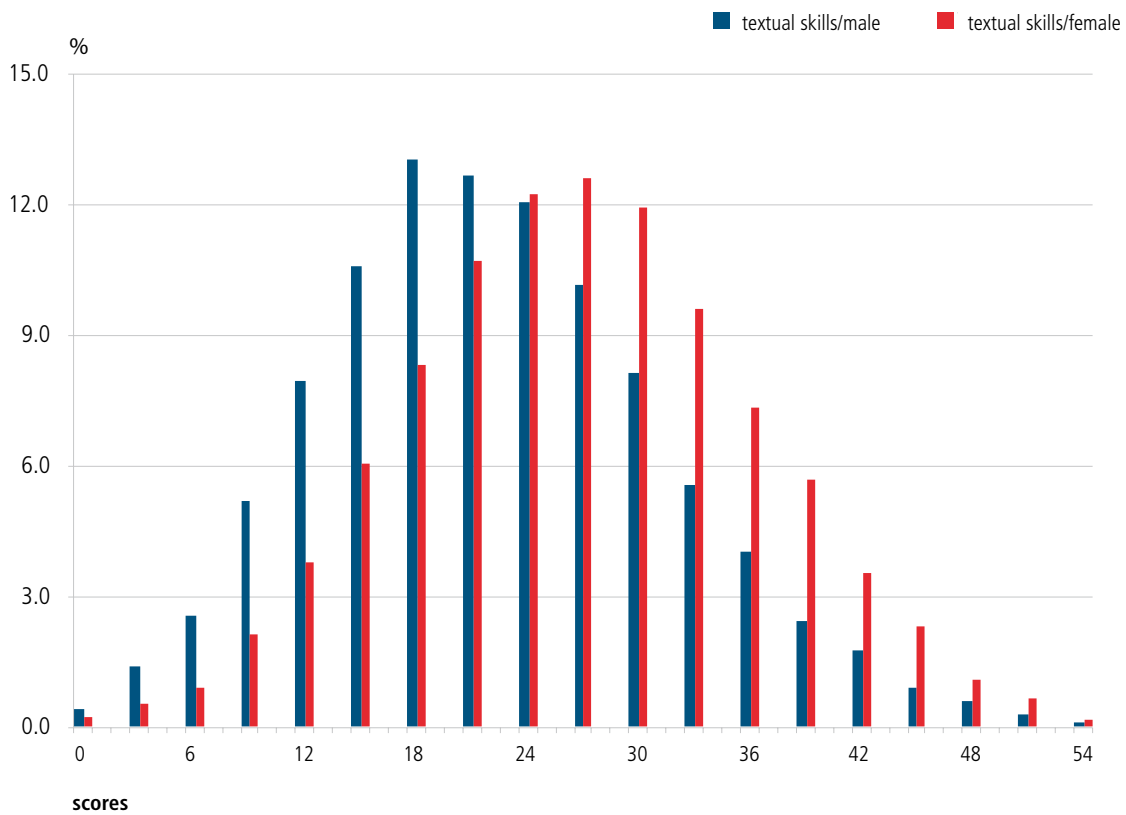
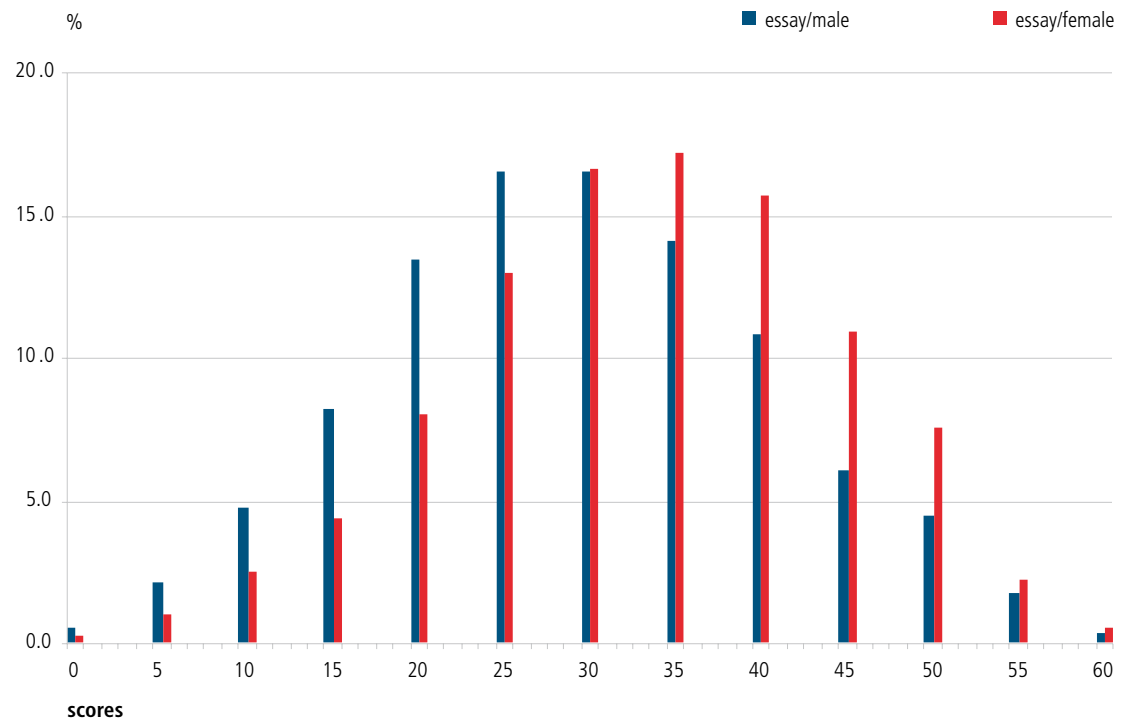
The new health education test (see Table 2.2.2 f.) was expected to accumulate a lot of testees, which was also the case. During the first examination year it gained a standing among the most popular general studies tests, with a 12% selection rate. It was

presumed that the success of the health education test would at least at the start be based on the relatively few upper secondary courses in it. This would encourage students to try out this test, feeling there was less at stake here than on the other tests in the general studies battery. A comparison carried out on the distribution of scores seemed to corroborate this as the health education test produced on average 18.75 points, with the other 42-point tests yielding 20.72 points. On the other hand, this result could simply be explained by the novelty of the test.

**TABLE 2.2.1** Distribution of scores on the mother-tongue tests (Finnish and Swedish together), by subtest and gender, 2007.

scores	essay subtest						textual skills subtest					
	male no.	%	female no.	%	total no.	%	male no.	%	female no.	%	total no.	%
0	74	0.6	57	0.3	131	0.4	52	0.4	40	0.2	92	0.3
3							181	1.4	94	0.5	275	0.9
4												
5	279	2.1	188	1.1	467	1.5						
6							335	2.6	159	0.9	494	1.6
9							675	5.2	375	2.1	1 050	3.4
10	617	4.8	447	2.5	1 064	3.5						
12							1 037	8.0	672	3.8	1 709	5.6
15	1 071	8.2	768	4.4	1 839	6.0	1 374	10.6	1 069	6.1	2 443	8.0
18							1 693	13.0	1 470	8.3	3 163	10.3
19												
20	1 744	13.4	1 411	8.0	3 155	10.3						
21							1 649	12.7	1 887	10.7	3 536	11.6
24							1 564	12.1	2 152	12.2	3 716	12.1
25	2 147	16.5	2 281	13.0	4 428	14.5						
27							1 319	10.2	2 218	12.6	3 537	11.6
30	2 151	16.6	2 925	16.6	5 076	16.6	1 061	8.2	2 104	11.9	3 165	10.3
33							727	5.6	1 694	9.6	2 421	7.9
35	1 834	14.1	3 031	17.2	4 865	15.9						
36							524	4.0	1 292	7.3	1 816	5.9
39							321	2.5	1 005	5.7	1 326	4.3
40	1 412	10.9	2 758	15.7	4 170	13.6						
42							228	1.8	627	3.6	855	2.8
45	791	6.1	1 925	10.9	2 716	8.9	117	0.9	413	2.3	530	1.7
48							79	0.6	198	1.1	277	0.9
50	577	4.4	1 333	7.6	1 910	6.2						
51							36	0.3	116	0.7	152	0.5
54							12	0.1	27	0.2	39	0.1
55	233	1.8	390	2.2	623	2.0						
60	54	0.4	98	0.6	152	0.5						
<b>subtotals</b>	<b>12 984</b>	<b>100.0</b>	<b>17 612</b>	<b>100.0</b>	<b>30 596</b>	<b>100.0</b>	<b>12 984</b>	<b>100.0</b>	<b>17 612</b>	<b>100.0</b>	<b>30 596</b>	<b>100.0</b>

FIG. 2.2.2 Distribution of scores on the mother-tongue tests, 2007.



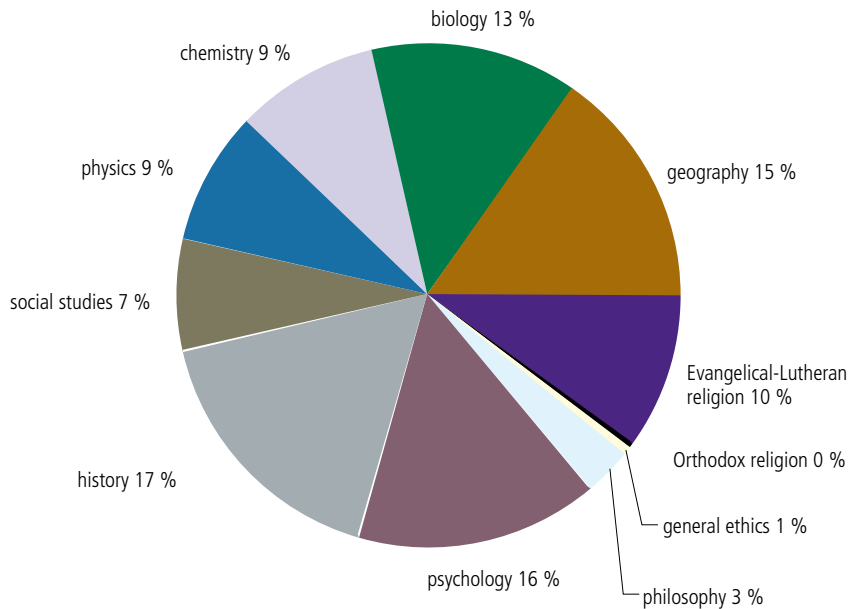
*It was predicted that the renewal of the mother-tongue tests, Finnish and Swedish, would favour male candidates over female in regard to the textual skills subtest, but this has not occurred so far. At this point, it seems that females outperform males on the textual skills subtest to an even greater degree than on the essay subtest.*

**TABLE 2.2.2** Distribution of the scores received on the health education test and the other general studies tests, all having 42-point maximums, by examination period, 2007.

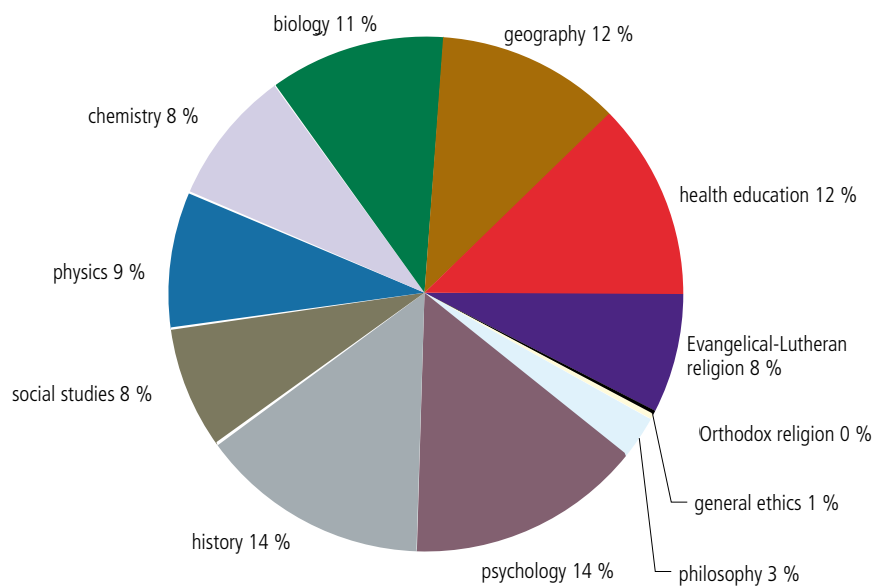
scores	health education test						all other general studies tests of max 42p.					
	spring		autumn		subtotals		spring		autumn		subtotals	
	no.	%	no.	%	no.	%	no.	%	no.	%	no.	%
0	1	0.0			1	0.0	28	0.1	10	0.1	38	0.1
1	1	0.0			1	0.0	11	0.0	13	0.1	24	0.1
2	6	0.1			6	0.1	21	0.1	36	0.3	57	0.1
3	8	0.2			8	0.1	45	0.2	43	0.3	88	0.2
4	7	0.2	4	0.1	11	0.1	56	0.2	61	0.5	117	0.3
5	15	0.3	6	0.2	21	0.3	110	0.4	100	0.7	210	0.5
6	20	0.4	28	0.8	48	0.6	141	0.6	89	0.7	230	0.6
7	55	1.2	26	0.7	81	1.0	197	0.8	177	1.3	374	1.0
8	78	1.7	37	1.1	115	1.4	301	1.2	201	1.5	502	1.3
9	84	1.9	47	1.3	131	1.6	376	1.5	243	1.8	619	1.6
10	111	2.5	73	2.1	184	2.3	509	2.0	308	2.3	817	2.1
11	158	3.5	92	2.6	250	3.1	600	2.4	338	2.5	938	2.4
12	202	4.5	135	3.8	337	4.2	703	2.8	422	3.1	1 125	2.9
13	238	5.3	167	4.8	405	5.1	859	3.4	476	3.5	1 335	3.4
14	253	5.6	188	5.4	441	5.5	914	3.6	521	3.9	1 435	3.7
15	268	6.0	202	5.7	470	5.9	1 139	4.5	570	4.2	1 709	4.4
16	275	6.1	222	6.3	497	6.2	1 195	4.7	612	4.5	1 807	4.7
17	314	7.0	224	6.4	538	6.7	1 341	5.3	612	4.5	1 953	5.0
18	299	6.7	242	6.9	541	6.8	1 239	4.9	672	5.0	1 911	4.9
19	300	6.7	248	7.1	548	6.8	1 419	5.6	632	4.7	2 051	5.3
20	275	6.1	246	7.0	521	6.5	1 293	5.1	730	5.4	2 023	5.2
21	214	4.8	207	5.9	421	5.3	1 304	5.2	704	5.2	2 008	5.2
22	211	4.7	186	5.3	397	5.0	1 338	5.3	660	4.9	1 998	5.2
23	181	4.0	174	5.0	355	4.4	1 218	4.8	638	4.7	1 856	4.8
24	133	3.0	152	4.3	285	3.6	1 175	4.7	550	4.1	1 725	4.5
25	150	3.3	124	3.5	274	3.4	1 059	4.2	594	4.4	1 653	4.3
26	110	2.4	104	3.0	214	2.7	971	3.9	497	3.7	1 468	3.8
27	88	2.0	90	2.6	178	2.2	921	3.7	477	3.5	1 398	3.6
28	79	1.8	69	2.0	148	1.8	814	3.2	454	3.4	1 268	3.3
29	75	1.7	54	1.5	129	1.6	748	3.0	397	2.9	1 145	3.0
30	70	1.6	53	1.5	123	1.5	622	2.5	298	2.2	920	2.4
31	47	1.1	37	1.1	84	1.1	493	2.0	287	2.1	780	2.0
32	47	1.1	26	0.7	73	0.9	478	1.9	256	1.9	734	1.9
33	32	0.7	15	0.4	47	0.6	416	1.7	202	1.5	618	1.6
34	24	0.5	24	0.7	48	0.6	337	1.3	184	1.4	521	1.3
35	22	0.5	7	0.2	29	0.4	264	1.1	148	1.1	412	1.1
36	11	0.2	2	0.1	13	0.2	210	0.8	94	0.7	304	0.8
37	14	0.3			14	0.2	156	0.6	86	0.6	242	0.6
38	6	0.1	1	0.0	7	0.1	78	0.3	63	0.5	141	0.4
39	7	0.2	2	0.1	9	0.1	52	0.2	33	0.2	85	0.2
40	1	0.0			1	0.0	34	0.1	15	0.1	49	0.1
41							8	0.0	17	0.1	25	0.1
42	1	0.0			1	0.0	7	0.0	6	0.0	13	0.0
<b>totals</b>	<b>4 491</b>	<b>100.0</b>	<b>3 514</b>	<b>100.0</b>	<b>8 005</b>	<b>100.0</b>	<b>25 200</b>	<b>100.0</b>	<b>13 526</b>	<b>100.0</b>	<b>38 726</b>	<b>100.0</b>

**FIG. 2.2.3** Distribution of participants on the various general studies tests, 2006-07. The comparison of the relative portions of the tests within the general studies group of tests in 2006 and 2007 indicates that health education has quickly reached a 12% share of the candidates, raising it immediately into the top group in popularity. As for the other tests, no significant changes have taken place.

**Distribution of participants on the general studies tests, 2006.**



**Distribution of participants on the general studies tests, 2007.**



### 2.3 Spacing out of tests over several examination periods

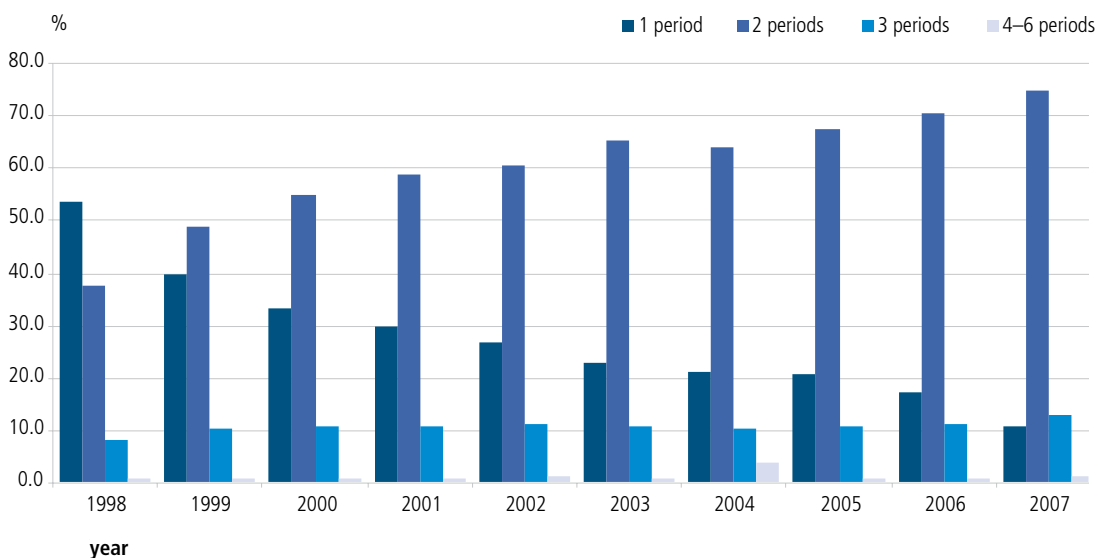
The spacing out of tests, ie. candidates can divide their tests out over three or fewer examination periods, has been possible since the spring examination of 1996. Upon receiving a failing grade, the compulsory tests can be renewed twice during the next three examination periods, so the completion of the entire examination can in practice take up to six examination periods, ie. three years.

The popularity of spacing out has grown tremendously so that today only about one of eight candidates completes the entire examination during one examination period. In 2007 only 11.0% of the candidates completed the examination at one time,

approximately 75% used two examination periods, whereas 13.1% wound up with three rounds. Those needing four or more periods were only about 1%. Those candidates graduating in autumn space out their examination more than do spring graduates, which however is largely due to the greater number of candidates renewing failed grades in autumn.

Candidates usually tend to take one or two tests during the autumn term of the third (and ordinarily, final) year of upper secondary school, leaving the remainder for the spring examination period. On average candidates sit some four tests in spring and approximately two tests in autumn.

**FIG. 2.3.1** Number of examination periods utilised by candidates in completing the matriculation examination, 1998–2007.



*Spacing out the Matriculation Examination has become increasingly popular since its inception in the examination of spring 1996.*





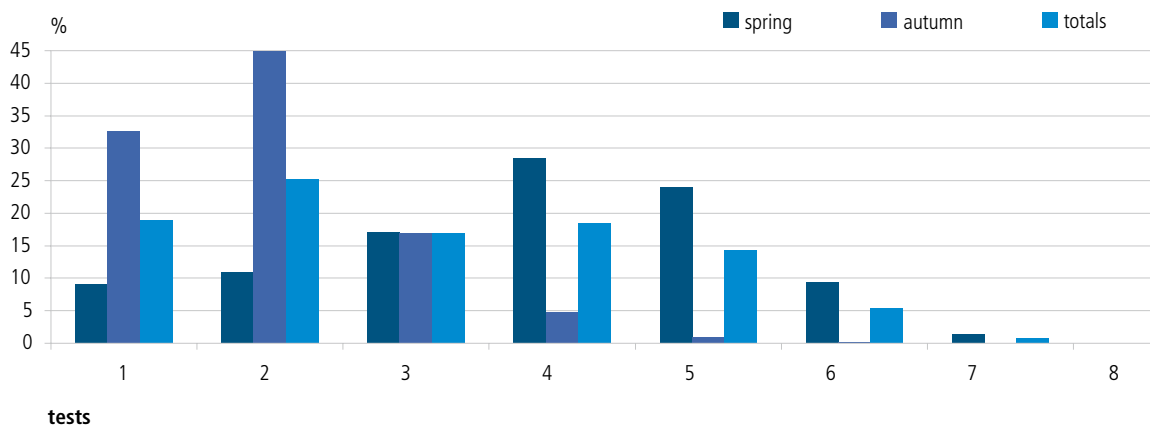
**TABLE 2.3.2** Numbers of tests chosen in one examination period, by candidate category, 2007.

category of candidate		tests								subtotals
		1	2	3	4	5	6	7	8	
<i>regular candidate</i>										
spring exam	no.	2 524	3 535	6 513	10 536	8 551	3 042	407	5	35 113
	%	7.2	10.1	18.5	30.0	24.4	8.7	1.2	0.0	100
autumn exam	no.	9 489	13 700	4 493	963	173	22	3		28 843
	%	32.9	47.5	15.6	3.3	0.6	0.1	0.0		100
subtotals	no.	12 013	17 235	11 006	11 499	8 724	3 064	410	5	63 956
	%	18.8	26.9	17.2	18.0	13.6	4.8	0.6	0.0	100
<i>private candidate</i>										
spring exam	no.	40	100	56	133	32	9			370
	%	10.8	27.0	15.1	35.9	8.6	2.4			100
autumn exam	no.	37	106	37	63	20	2			265
	%	14.0	40.0	14.0	23.8	7.5	0.8			100
subtotals	no.	77	206	93	196	52	11			635
	%	12.1	32.4	14.6	30.9	8.2	1.7			100
<i>vocational school</i>										
spring exam	no.	261	450	327	332	48	11			1 429
	%	18.3	31.5	22.9	23.2	3.4	0.8			100
autumn exam	no.	351	544	132	65	3				1 095
	%	32.1	49.7	12.1	5.9	0.3				100
subtotals	no.	612	994	459	397	51	11			2 524
	%	24.2	39.4	18.2	15.7	2.0	0.4			100
<i>renewing a failed compulsory test</i>										
spring exam	no.	740	430	401	429	211	71	3		2 285
	%	32.4	18.8	17.5	18.8	9.2	3.1	0.1	0.0	100
autumn exam	no.	1 115	769	459	171	21	3	1		2 539
	%	43.9	30.3	18.1	6.7	0.8	0.1			100
subtotals	no.	1 855	1 199	860	600	232	74	4	0	4 824
	%	38.5	24.9	17.8	12.4	4.8	1.5	0.1	0.0	100
<i>renewing a passed test</i>										
spring exam	no.	672	934	1 610	3 696	4 100	1 889	280	2	13 183
	%	5.1	7.1	12.2	28.0	31.1	14.3	2.1	0.0	100
autumn exam	no.	1 215	2 024	1 295	526	104	23			5 187
	%	23.4	39.0	25.0	10.1	2.0	0.4			100
subtotals	no.	1 887	2 958	2 905	4 222	4 204	1 912	280	2	18 370
	%	10.3	16.1	15.8	23.0	22.9	10.4	1.5	0.0	100
<i>complementing the exam</i>										
spring exam	no.	459	290	149	77	55	20	5		1 055
	%	43.5	27.5	14.1	7.3	5.2	1.9	0.5		100
autumn exam	no.	281	283	119	31	7	5			726
	%	38.7	39.0	16.4	4.3	1.0	0.7			100
subtotals	no.	740	573	268	108	62	25	5		1 781
	%	41.5	32.2	15.1	6.1	3.5	1.4	0.3		100
<i>renewing a failed test</i>										
spring exam	no.	24	10	4	9	1				48
	%	50.0	20.8	8.3	18.8	2.1				100
autumn exam	no.	84	50	24	3	1	1			163
	%	51.5	30.7	14.7	1.8	0.6	0.6			100
subtotals	no.	108	60	28	12	2	1			211
	%	51.2	28.4	13.3	5.7	0.9	0.5			100

category of candidate		tests								subtotals
		1	2	3	4	5	6	7	8	
<i>08 renewing a failed optional test</i>										
spring exam	no.	34	61	41	56	78	39	7		316
	%	10.8	19.3	13.0	17.7	24.7	12.3	2.2		100
autumn exam	no.	60	116	82	47	8	2	1		316
	%	19.0	36.7	25.9	14.9	2.5	0.6			100
subtotals	no.	94	177	123	103	86	41	8		632
	%	14.9	28.0	19.5	16.3	13.6	6.5	1.3		100
<i>09 sitting a separate test</i>										
spring exam	no.	80	17	28	23	2				150
	%	53.3	11.3	18.7	15.3	1.3				100
autumn exam	no.	97	12	1						110
	%	88.2	10.9	0.9						100
subtotals	no.	177	29	29	23					258
	%	68.6	11.2	11.2	8.9					100
<i>10 joint certification**</i>										
spring exam	no.	92	143	159	247	65	6			712
	%	12.9	20.1	22.3	34.7	9.1	0.8			100
autumn exam	no.	227	225	54	24	2				532
	%	42.7	42.3	10.2	4.5	0.4				100
subtotals	no.	319	368	213	271	67	6			1 244
	%	25.6	29.6	17.1	21.8	5.4	0.5			100
<b>subtotals</b>										
<b>spring exam*</b>	<b>no.</b>	<b>4 926</b>	<b>5 970</b>	<b>9 288</b>	<b>15 538</b>	<b>13 143</b>	<b>5 087</b>	<b>702</b>	<b>7</b>	<b>54 661</b>
	<b>%</b>	<b>9.0</b>	<b>10.9</b>	<b>17.0</b>	<b>28.4</b>	<b>24.0</b>	<b>9.3</b>	<b>1.3</b>	<b>0.0</b>	<b>100</b>
<b>autumn exam*</b>	<b>no.</b>	<b>12 956</b>	<b>17 829</b>	<b>6 696</b>	<b>1 893</b>	<b>339</b>	<b>58</b>	<b>5</b>		<b>39 776</b>
	<b>%</b>	<b>32.6</b>	<b>44.8</b>	<b>16.8</b>	<b>4.8</b>	<b>0.9</b>	<b>0.1</b>	<b>0.0</b>		<b>100</b>
<b>totals*</b>	<b>no.</b>	<b>17 882</b>	<b>23 799</b>	<b>15 984</b>	<b>17 431</b>	<b>13 482</b>	<b>5 145</b>	<b>707</b>	<b>7</b>	<b>94 437</b>
	<b>%</b>	<b>18.9</b>	<b>25.2</b>	<b>16.9</b>	<b>18.5</b>	<b>14.3</b>	<b>5.4</b>	<b>0.7</b>	<b>0.0</b>	<b>100</b>

\*The same examinee may appear simultaneously under several categories. All of the tests of said candidate appear under each category s/he has participated in during that examination period.

\*\*Until autumn 2005 these examinees were in the category of regular candidates, and completing a combination of certificates.

**FIG. 2.3.2** Number of tests chosen during one examination period, 2007.

*Candidates generally choose one or two tests in autumn and four or five in spring.*

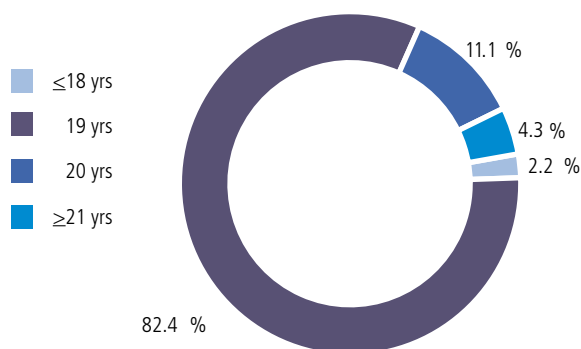
## 3. Results

### 3.1 Passes and fails

A candidate is considered a graduate when s/he has passed four compulsory tests. In case one compulsory test is failed, the Board can award a Matriculation Examination Certificate if the other test scores are sufficiently high. This procedure is termed compensation. A graduate is a person who has passed the examination and earned an upper secondary school certificate or a vocational qualification. Thus, passing the Matriculation Examination is not enough to graduate.

From the 2007 spring percentages of fails for the whole country, we can observe that Swedish-speaking candidates fail considerably less often than do Finnish speakers, 3.0% against the Finnish speakers' 7.3% (see Table 3.1.1). Further, there is a marked difference between male and female candidates in that female candidates' fails amounted to 5.7% with males at 8.7%. In the autumn, the difference between the numbers of males and females failing was fairly small, while the Swedish-speaking candidates had a considerably lower share of fails than the Finnish speakers (see Table 3.1.2).

**FIG. 3.1.1** Age distribution of those completing the Matriculation Examination, 2007.



*An overwhelming majority of candidates still take the exam at 19.*

On one hand, in spring 2007 at the regional level, we see that the lowest percentage of failures was found in the Åland Islands (the archipelago) with 1.3%, and the highest in Lapland, 9.0% (both regions having few examinees, see Fig. 3.1.2). A total of 2,254 candidates, ie. 7.0%, failed the examination. On the other hand, in autumn 2007 the lowest failure percentage, ie. 13.1%, was found in Southern Karelia and the highest, 43.9%, in the Kymenlaakso region (see Fig. 3.1.3). The number of candidates taking the examination in the spring is six-fold that of the autumn. Because the number of graduates is currently still small in these autumn exams, random chance has altogether an overly large impact, in particular in small regions with a sparse population. As an aside to this discussion, those who discontinued their exam have not been itemised in the statistics.

At the end of 2006, 32.1% of Finns who are 15 and older had passed the Matriculation Examination (see Table 3.1.3). Almost no one graduates at the ages of 15–17, but Statistics Finland figures do not include a suitable breakdown of this age cohort (see also Fig. 3.1.1). As can be expected, the share of those who have passed the exam is higher, the younger the group in question (see Table 3.1.4). Today the overwhelming majority of candidates pass their examination at 19. Out of graduates aged 25 or older, two-thirds were female candidates in 2007.

The end of this section summarises the participation of the 18–20-year old population in the Matriculation Examination of 2007 by region (see Table 3.1.5). Proportionately the greatest number of candidates came from Kainuu, the smallest from the Åland Islands (see Fig. 3.1.5). Throughout the country the degree of participation was very similar in all regions with the exception of the Åland Islands, where a large number of young people take the Swedish “gymnasieexamen” examination.

TABLE 3.1.1 Participation in the spring 2007 matriculation examination, by region.

region	Finnish-speaking examinees			Swedish-speaking examinees			all examinees		
	male	female	subtotals	male	female	subtotals	male	female	subtotals
<i>01 Uusimaa</i>									
examinees	3 266	4 196	7 462	371	445	816	3 637	4 641	8 278
passes	2 893	3 861	6 754	356	438	794	3 249	4 299	7 548
fails	311	279	590	13	6	19	324	285	609
fails %	9.5	6.6	7.9	3.5	1.3	2.3	8.9	6.1	7.4
<i>02 Eastern Uusimaa</i>									
examinees	151	165	316	84	123	207	235	288	523
passes	126	154	280	80	118	198	206	272	478
fails	21	10	31	4	3	7	25	13	38
fails %	13.9	6.1	9.8	4.8	2.4	3.4	10.6	4.5	7.3
<i>03 Southwestern Finland</i>									
examinees	1 132	1 500	2 632	76	118	194	1 208	1 618	2 826
passes	1 024	1 394	2 418	73	116	189	1 097	1 510	2 607
fails	95	87	182	3	2	5	98	89	187
fails %	8.4	5.8	6.9	3.9	1.7	2.6	8.1	5.5	6.6
<i>04 Satakunta</i>									
examinees	550	774	1 324	13	12	25	563	786	1 349
passes	497	718	1 215	13	12	25	510	730	1 240
fails	49	47	96				49	47	96
fails %	8.9	6.1	7.3	0.0	0.0	0.0	8.7	6.0	7.1
<i>05 Kanta-Häme</i>									
examinees	400	519	919				400	519	919
passes	368	490	858				368	490	858
fails	31	28	59				31	28	59
fails %	7.8	5.4	6.4				7.8	5.4	6.4
<i>06 Pirkanmaa</i>									
examinees	1 167	1 689	2 856	8	8	16	1 175	1 697	2 872
passes	1 045	1 608	2 653	8	8	16	1 053	1 616	2 669
fails	108	70	178				108	70	178
fails %	9.3	4.1	6.2	0.0	0.0	0.0	9.2	4.1	6.2
<i>07 Päijät-Häme</i>									
examinees	498	677	1 175				498	677	1 175
passes	450	641	1 091				450	641	1 091
fails	37	33	70				37	33	70
fails %	7.4	4.9	6.0				7.4	4.9	6.0
<i>08 Kymenlaakso</i>									
examinees	421	617	1 038	5	13	18	426	630	1 056
passes	365	574	939	5	13	18	370	587	957
fails	44	39	83				44	39	83
fails %	10.5	6.3	8.0	0.0	0.0	0.0	10.3	6.2	7.9
<i>09 Southern Karelia</i>									
examinees	324	390	714				324	390	714
passes	298	357	655				298	357	655
fails	23	30	53				23	30	53
fails %	7.1	7.7	7.4				7.1	7.7	7.4
<i>10 Southern Savo</i>									
examinees	424	625	1 049				424	625	1 049
passes	380	578	958				380	578	958
fails	40	41	81				40	41	81
fails %	9.4	6.6	7.7				9.4	6.6	7.7

region	Finnish-speaking examinees			Swedish-speaking examinees			all examinees		
	male	female	subtotals	male	female	subtotals	male	female	subtotals
<i>11 Northern Savo</i>									
examinees	681	906	1 587				681	906	1 587
passes	622	858	1 480				622	858	1 480
fails	51	44	95				51	44	95
fails %	7.5	4.9	6.0				7.5	4.9	6.0
<i>12 Northern Karelia</i>									
examinees	466	603	1 069				466	603	1 069
passes	434	573	1 007				434	573	1 007
fails	26	26	52				26	26	52
fails %	5.6	4.3	4.9				5.6	4.3	4.9
<i>13 Central Finland</i>									
examinees	713	961	1 674				713	961	1 674
passes	649	913	1 562				649	913	1 562
fails	60	41	101				60	41	101
fails %	8.4	4.3	6.0				8.4	4.3	6.0
<i>14 Southern Ostrobothnia</i>									
examinees	541	809	1 350				541	809	1 350
passes	485	741	1 226				485	741	1 226
fails	49	65	114				49	65	114
fails %	9.1	8.0	8.4				9.1	8.0	8.4
<i>15 Ostrobothnia</i>									
examinees	206	257	463	255	387	642	461	644	1 105
passes	185	233	418	236	374	610	421	607	1 028
fails	19	23	42	15	10	25	34	33	67
fails %	9.2	8.9	9.1	5.9	2.6	3.9	7.4	5.1	6.1
<i>16 Central Ostrobothnia</i>									
examinees	132	278	410	18	33	51	150	311	461
passes	126	265	391	14	31	45	140	296	436
fails	5	12	17	4	1	5	9	13	22
fails %	3.8	4.3	4.1	22.2	3.0	9.8	6.0	4.2	4.8
<i>17 Northern Ostrobothnia</i>									
examinees	967	1 374	2 341	3	2	5	970	1 376	2 346
passes	853	1 266	2 119	3	2	5	856	1 268	2 124
fails	100	95	195				100	95	195
fails %	10.3	6.9	8.3	0.0	0.0	0.0	10.3	6.9	8.3
<i>18 Kainuu</i>									
examinees	252	344	596				252	344	596
passes	222	321	543				222	321	543
fails	28	21	49				28	21	49
fails %	11.1	6.1	8.2				11.1	6.1	8.2
<i>19 Lapland</i>									
examinees	470	687	1 157				470	687	1 157
passes	412	633	1 045				412	633	1 045
fails	54	50	104				54	50	104
fails %	11.5	7.3	9.0				11.5	7.3	9.0
<i>20 Åland Islands</i>									
examinees				25	52	77	25	52	77
passes				24	52	76	24	52	76
fails				1		1	1	0	1
fails %				4.0	0.0	1.3	4.0	0.0	1.3
<b>entire country</b>									
<b>examinees</b>	<b>12 761</b>	<b>17 371</b>	<b>30 132</b>	<b>858</b>	<b>1 193</b>	<b>2 051</b>	<b>13 619</b>	<b>18 564</b>	<b>32 183</b>
<b>passes</b>	<b>11 434</b>	<b>16 178</b>	<b>27 612</b>	<b>812</b>	<b>1 164</b>	<b>1 976</b>	<b>12 246</b>	<b>17 342</b>	<b>29 588</b>
<b>fails</b>	<b>1 151</b>	<b>1 041</b>	<b>2 192</b>	<b>40</b>	<b>22</b>	<b>62</b>	<b>1 191</b>	<b>1 063</b>	<b>2 254</b>
<b>fails %</b>	<b>9.0</b>	<b>6.0</b>	<b>7.3</b>	<b>4.7</b>	<b>1.8</b>	<b>3.0</b>	<b>8.7</b>	<b>5.7</b>	<b>7.0</b>

**FIG. 3.1.2** Percentages of fails by region, spring examination 2007. Fails varied from the Åland Islands, 1.3% (20), to Lapland, 9.0% (19). On average, 7.0% of the candidates failed, 0.5% less than the year before.

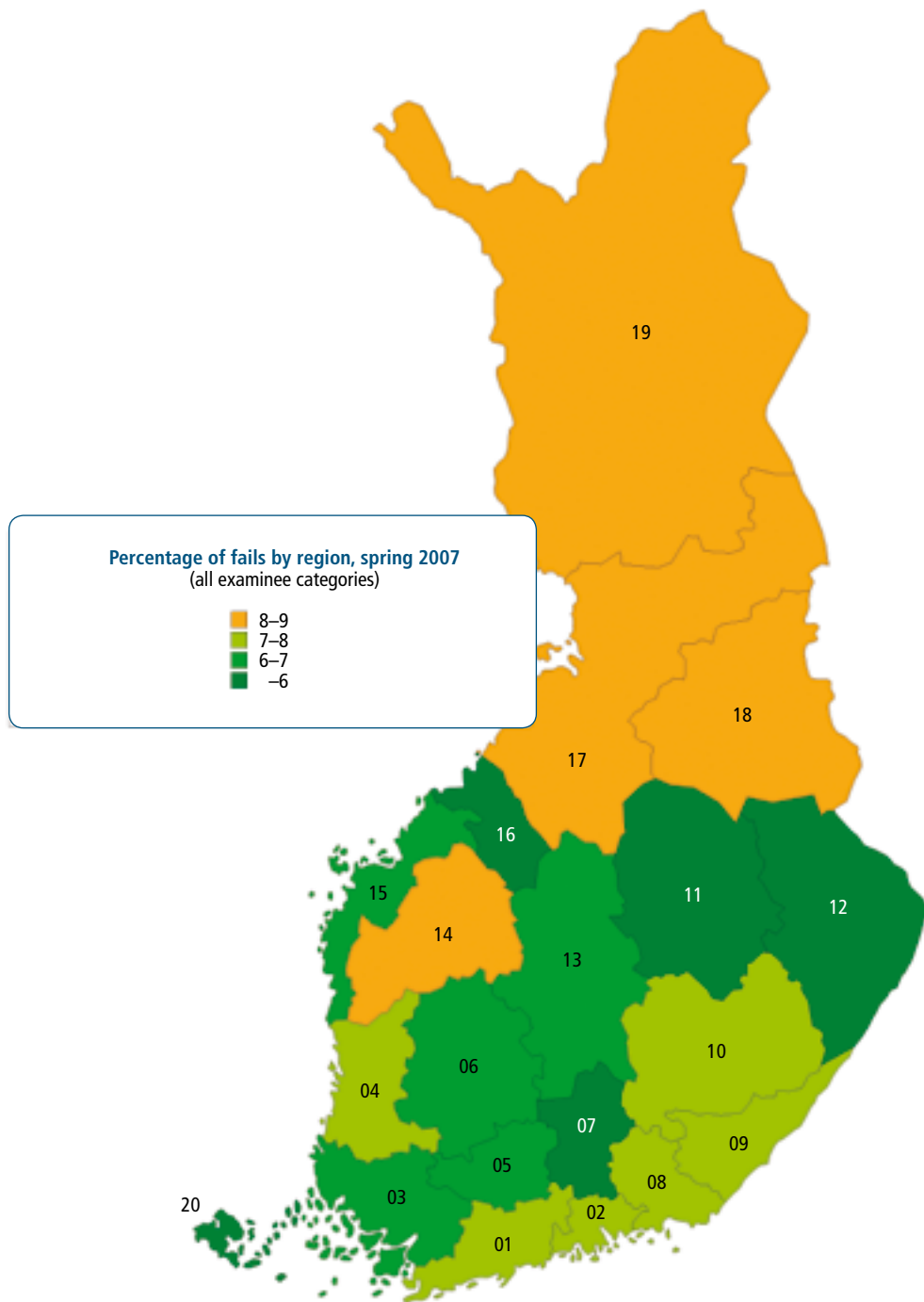


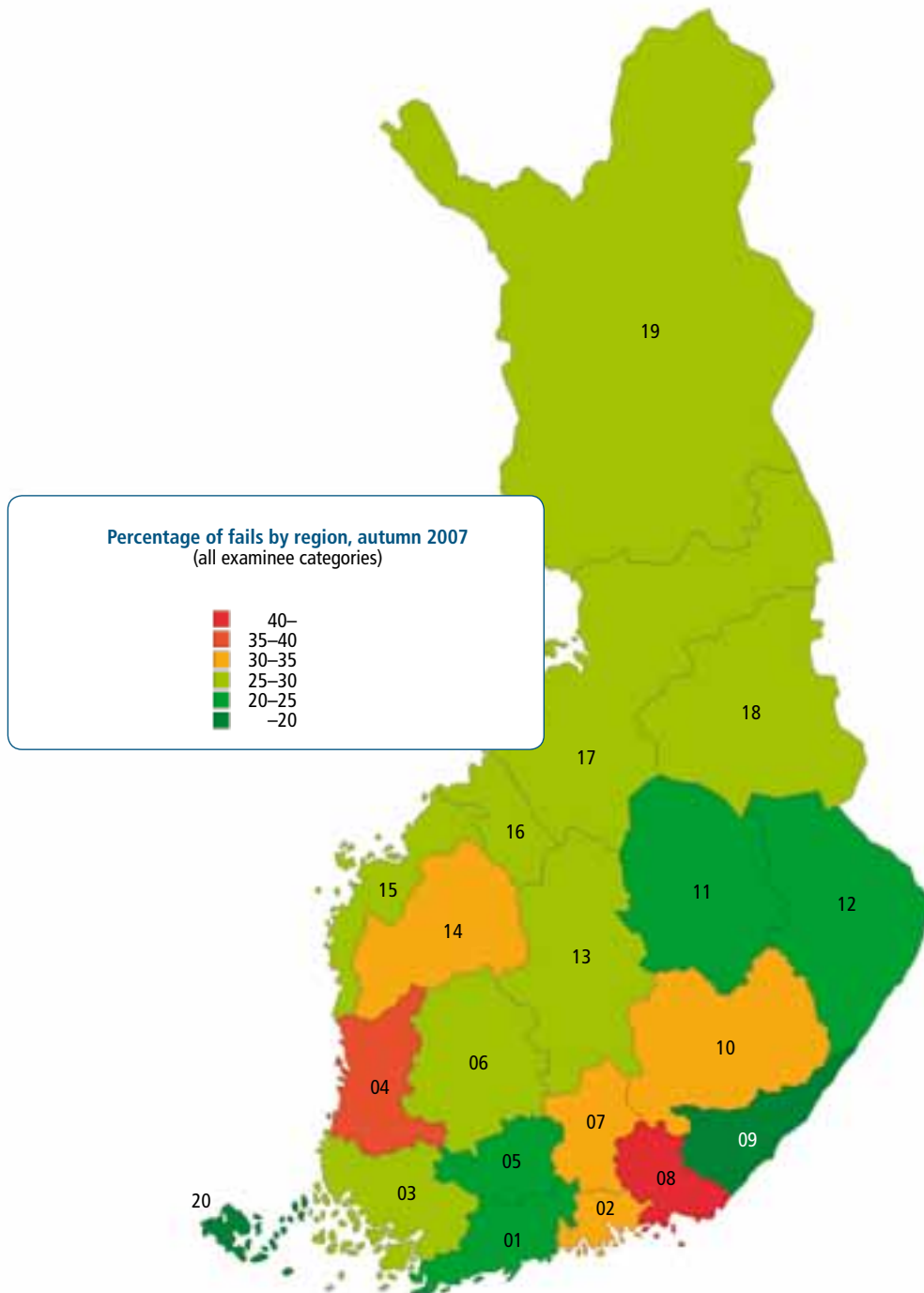


TABLE 3.1.2 Participation in the autumn 2007 Matriculation Examination, by region.

region	Finnish-speaking examinees			Swedish-speaking examinees			all examinees		
	male	female	subtotals	male	female	subtotals	male	female	subtotals
<i>01 Uusimaa</i>									
examinees	799	864	1 663	39	32	71	838	896	1 734
passes	571	643	1 214	30	27	57	601	670	1 271
fails	169	186	355	6	3	9	175	189	364
fails %	21.2	21.5	21.3	15.4	9.4	12.7	20.9	21.1	21.0
<i>02 Eastern Uusimaa</i>									
examinees	36	16	52	10	4	14	46	20	66
passes	19	10	29	9	2	11	28	12	40
fails	16	3	19	1	2	3	17	5	22
fails %	44.4	18.8	36.5	10.0	50.0	21.4	37.0	25.0	33.3
<i>03 Southwestern Finland</i>									
examinees	153	184	337	6	3	9	159	187	346
passes	97	123	220	5	2	7	102	125	227
fails	46	50	96	1	1	2	47	51	98
fails %	30.1	27.2	28.5	16.7	33.3	22.2	29.6	27.3	28.3
<i>04 Satakunta</i>									
examinees	90	101	191		1	1	90	102	192
passes	50	62	112		1	1	50	63	113
fails	38	36	74				38	36	74
fails %	42.2	35.6	38.7		0.0	0.0	42.2	35.3	38.5
<i>05 Kanta-Häme</i>									
examinees	57	54	111				57	54	111
passes	38	37	75				38	37	75
fails	12	11	23				12	11	23
fails %	21.1	20.4	20.7				21.1	20.4	20.7
<i>06 Pirkanmaa</i>									
examinees	187	197	384		4	4	187	201	388
passes	117	138	255		4	4	117	142	259
fails	62	51	113				62	51	113
fails %	33.2	25.9	29.4		0.0	0.0	33.2	25.4	29.1
<i>07 Päijät-Häme</i>									
examinees	84	81	165				84	81	165
passes	54	53	107				54	53	107
fails	27	23	50				27	23	50
fails %	32.1	28.4	30.3				32.1	28.4	30.3
<i>08 Kymenlaakso</i>									
examinees	55	68	123				55	68	123
passes	30	34	64				30	34	64
fails	23	31	54				23	31	54
fails %	41.8	45.6	43.9				41.8	45.6	43.9
<i>09 Southern Karelia</i>									
examinees	64	58	122				64	58	122
passes	53	44	97				53	44	97
fails	8	8	16				8	8	16
fails %	12.5	13.8	13.1				12.5	13.8	13.1
<i>10 Southern Savo</i>									
examinees	62	65	127				62	65	127
passes	32	41	73				32	41	73
fails	24	18	42				24	18	42
fails %	38.7	27.7	33.1				38.7	27.7	33.1

region	Finnish-speaking examinees			Swedish-speaking examinees			all examinees		
	male	female	subtotals	male	female	subtotals	male	female	subtotals
<i>11 Northern Savo</i>									
examinees	102	115	217				102	115	217
passes	68	82	150				68	82	150
fails	26	27	53				26	27	53
fails %	25.5	23.5	24.4				25.5	23.5	24.4
<i>12 Northern Karelia</i>									
examinees	52	68	120				52	68	120
passes	35	51	86				35	51	86
fails	13	13	26				13	13	26
fails %	25.0	19.1	21.7				25.0	19.1	21.7
<i>13 Central Finland</i>									
examinees	108	104	212				108	104	212
passes	81	69	150				81	69	150
fails	22	31	53				22	31	53
fails %	20.4	29.8	25.0				20.4	29.8	25.0
<i>14 Southern Ostrobothnia</i>									
examinees	67	106	173				67	106	173
passes	40	72	112				40	72	112
fails	24	33	57				24	33	57
fails %	35.8	31.1	32.9				35.8	31.1	32.9
<i>15 Ostrobothnia</i>									
examinees	29	29	58	31	39	70	60	68	128
passes	19	23	42	18	28	46	37	51	88
fails	10	5	15	12	8	20	22	13	35
fails %	34.5	17.2	25.9	38.7	20.5	28.6	36.7	19.1	27.3
<i>16 Central Ostrobothnia</i>									
examinees	17	20	37	5	3	8	22	23	45
passes	13	11	24	4	3	7	17	14	31
fails	4	8	12	1		1	5	8	13
fails %	23.5	40.0	32.4	20.0	0.0	12.5	22.7	34.8	28.9
<i>17 Northern Ostrobothnia</i>									
examinees	194	208	402		1	1	194	209	403
passes	125	143	268			0	125	143	268
fails	61	55	116		1	1	61	56	117
fails %	31.4	26.4	28.9		100.0	100.0	31.4	26.8	29.0
<i>18 Kainuu</i>									
examinees	50	53	103				50	53	103
passes	35	37	72				35	37	72
fails	14	13	27				14	13	27
fails %	28.0	24.5	26.2				28.0	24.5	26.2
<i>19 Lapland</i>									
examinees	108	133	241				108	133	241
passes	75	99	174				75	99	174
fails	31	31	62				31	31	62
fails %	28.7	23.3	25.7				28.7	23.3	25.7
<i>20 Åland Islands</i>									
examinees				5	1	6	5	1	6
passes				4		4	4	0	4
fails				1		1	1	0	1
fails %				20.0		16.7	20.0	0.0	16.7
<b>ENTIRE COUNTRY</b>									
examinees	2 314	2 524	4 838	96	88	184	2 410	2 612	5 022
passes	1 552	1 772	3 324	70	67	137	1 622	1 839	3 461
fails	630	633	1 263	22	15	37	652	648	1 300
fails %	27.2	25.1	26.1	22.9	17.1	20.1	27.1	24.8	25.9

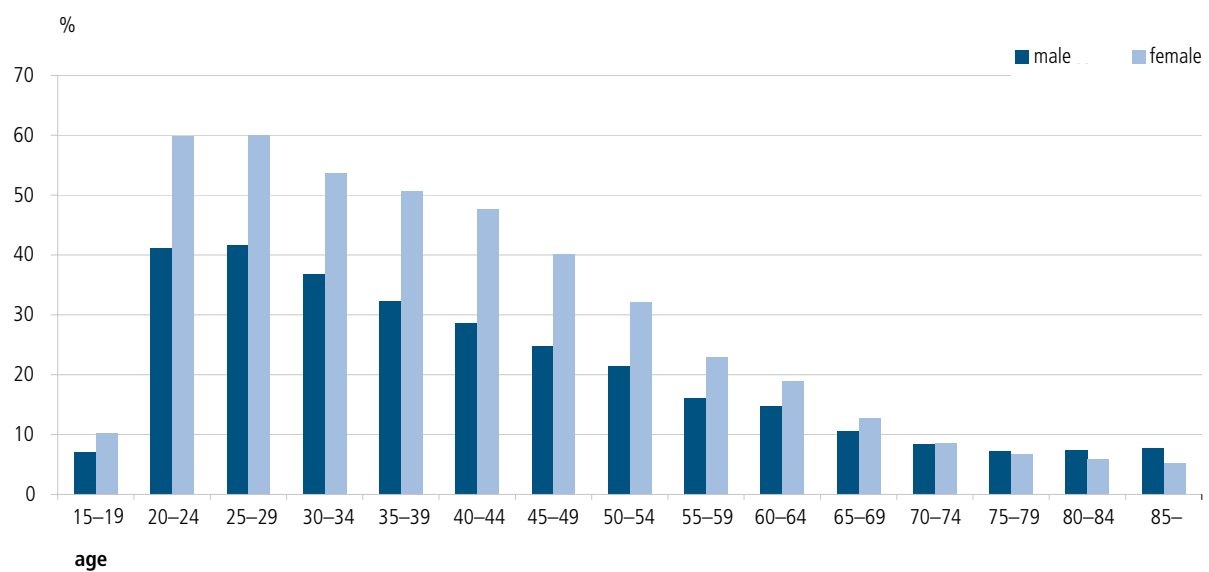
**FIG. 3.1.3** Percentages of fails by region, autumn examination 2007. Fails varied from Southern Karelia, 13.1% (09), to Kymenlaakso, 9.0% (08). On average, 25.9% of the candidates failed, 1% more than the year before.



**TABLE 3.1.3** Portion of the population having completed the Matriculation Examination, by age cohort, 2006.

age	subtotals, those having completed the exam	portion of age cohort (%)	portion of males in age cohort (%)	portion of females in age cohort (%)
15–19	28 095	8.6	7.1	10.2
20–24	167 105	50.3	41.2	59.9
25–29	167 642	50.7	41.6	60.1
30–34	142 016	45.0	36.7	53.7
35–39	138 970	41.3	32.3	50.6
40–44	142 834	38.0	28.7	47.6
45–49	121 913	32.5	24.9	40.2
50–54	105 048	26.8	21.4	32.2
55–59	79 866	19.5	16.1	22.9
60–64	52 816	16.9	14.7	18.9
65–69	30 335	11.7	10.5	12.7
70–74	17 561	8.5	8.4	8.6
75–79	12 689	6.9	7.2	6.8
80–84	8 081	6.3	7.4	5.8
85–	5 473	5.8	7.8	5.2
<b>TOTALS*</b>	<b>1 220 444</b>	<b>27.9</b>	<b>23.4</b>	<b>32.1</b>

\*Of the resident population, 15 years and older.  
Source: Statistics Finland, school statistics

**FIG. 3.1.4** Portion of the population having completed the Matriculation Examination, by age cohort.

*At the end of 2006, 32.1% of Finns 15 and older had passed the examination, the figure being higher, the younger the age cohort.*

TABLE 3.1.4 Age distribution of those completing the Matriculation Examination, 2007.

age	spring exam						autumn exam					
	male		female		subtotals		male		female		subtotals	
	no.	%	no.	%	no.	%	no.	%	no.	%	no.	%
-17	1	0.0	1	0.0	2	0.0	1	0.1	2	0.1	3	0.1
18	156	1.3	378	2.2	534	1.8	59	3.6	126	6.8	185	5.3
19	10 235	83.5	14 509	83.7	24 744	83.6	1 217	74.8	1 268	68.9	2 485	71.7
20	1 431	11.7	1 871	10.8	3 302	11.2	183	11.3	187	10.2	370	10.7
21	171	1.4	171	1.0	342	1.2	40	2.5	55	3.0	95	2.7
22	52	0.4	59	0.3	111	0.4	20	1.2	25	1.4	45	1.3
23	41	0.3	35	0.2	76	0.3	23	1.4	24	1.3	47	1.4
24	33	0.3	33	0.2	66	0.2	10	0.6	17	0.9	27	0.8
25-29	64	0.5	76	0.4	140	0.5	19	1.2	37	2.0	56	1.6
30-34	19	0.2	40	0.2	59	0.2	15	0.9	10	0.5	25	0.7
35-39	9	0.1	20	0.1	29	0.1	9	0.6	17	0.9	26	0.7
40-44	8	0.1	31	0.2	39	0.1	7	0.4	13	0.7	20	0.6
45-49	10	0.1	29	0.2	39	0.1	7	0.4	18	1.0	25	0.7
50-54	8	0.1	29	0.2	37	0.1	7	0.4	14	0.8	21	0.6
55-59	10	0.1	30	0.2	40	0.1	4	0.2	14	0.8	18	0.5
60-64	4	0.0	12	0.1	16	0.1	2	0.1	8	0.4	10	0.3
65-69	1	0.0	9	0.1	10	0.0	2	0.1	5	0.3	7	0.2
70-	2	0.0		0.0	2	0.0	1	0.1	1	0.1	2	0.1
<b>TOTALS</b>	<b>12 255</b>	<b>100.0</b>	<b>17 333</b>	<b>100.0</b>	<b>29 588</b>	<b>100.0</b>	<b>1 626</b>	<b>100.0</b>	<b>1 841</b>	<b>100.0</b>	<b>3 467</b>	<b>100.0</b>

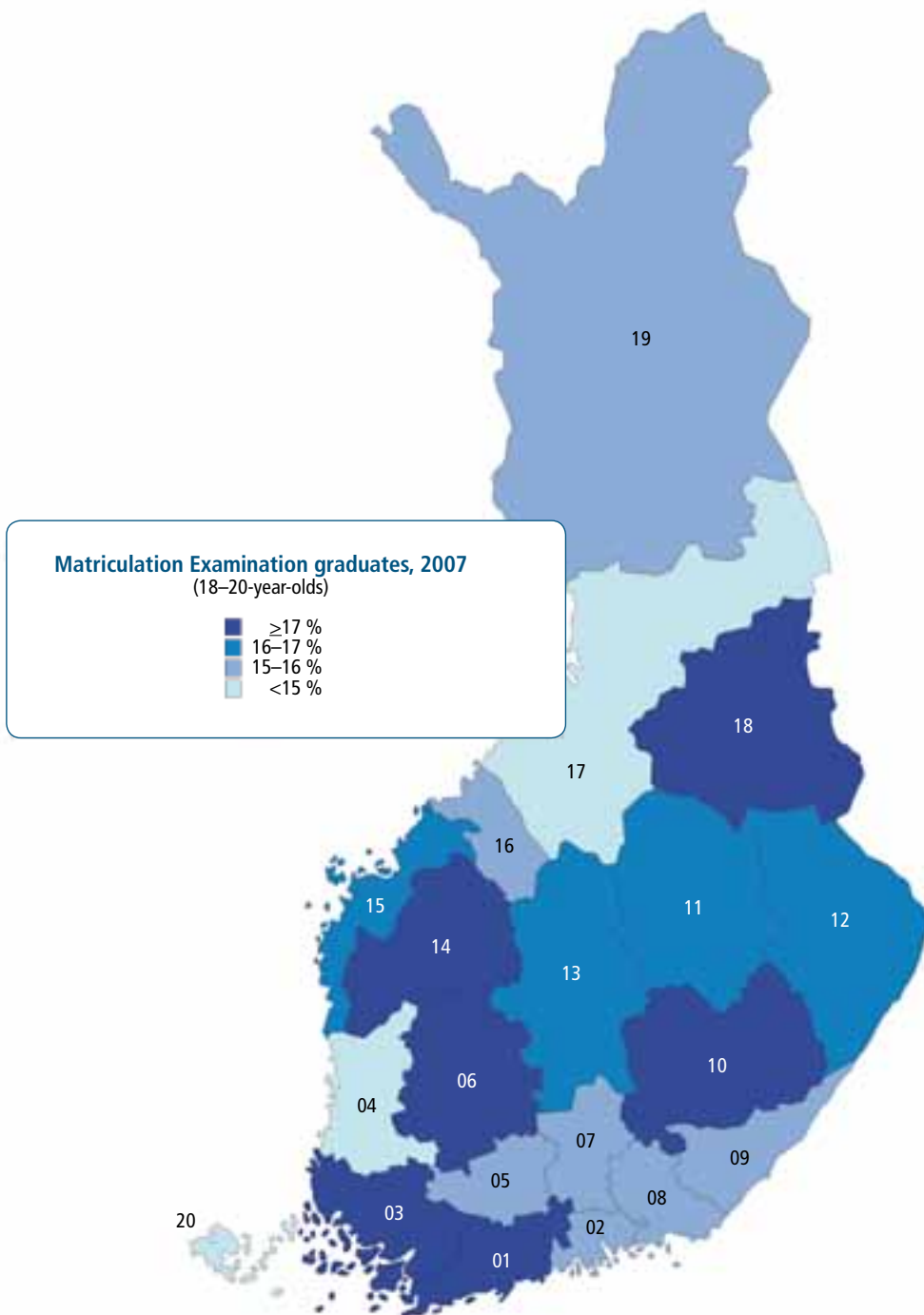
TABLE 3.1.5 Portions of Matriculation Examination graduates among 18-20-year-olds, by region, 2007.

region	age									18-20 yrs subtotal		
	18 yrs			19 yrs			20 yrs			grad.	all**	%
	grad.*	all	%	grad.*	all	%	grad.	all**	%	grad.	all**	%
01 Uusimaa	270	15 961	1.69	6 797	15 839	42.91	1 182	15 709	7.52	8 249	47 509	17.36
02 Eastern Uusimaa	18	1 209	1.49	440	1 131	38.90	48	962	4.99	506	3 302	15.32
03 Southwestern Finland	41	5 241	0.78	2 353	5 390	43.65	279	5 082	5.49	2 673	15 713	17.01
04 Satakunta	24	2 812	0.85	1 068	2 773	38.51	111	2 592	4.28	1 203	8 177	14.71
05 Kanta-Häme	9	1 998	0.45	803	2 051	39.15	94	1 863	5.05	906	5 912	15.32
06 Pirkanmaa	69	5 339	1.29	2 278	5 552	41.03	440	5 368	8.20	2 787	16 259	17.14
07 Päijät-Häme	25	2 461	1.02	881	2 348	37.52	156	2 180	7.16	1 062	6 989	15.20
08 Kymenlaakso	15	2 167	0.69	855	2 186	39.11	98	1 982	4.94	968	6 335	15.28
09 Southern Karelia	23	1 630	1.41	638	1 627	39.21	69	1 504	4.59	730	4 761	15.33
10 Southern Savo	22	2 020	1.09	910	2 018	45.09	59	1 762	3.35	991	5 800	17.09
11 Northern Savo	43	3 197	1.35	1 371	3 360	40.80	160	2 998	5.34	1 574	9 555	16.47
12 Northern Karelia	25	2 255	1.11	956	2 224	42.99	78	2 055	3.80	1 059	6 534	16.21
13 Central Finland	26	3 317	0.78	1 477	3 516	42.01	132	3 261	4.05	1 635	10 094	16.20
14 Southern Ostrobothnia	13	2 598	0.50	1 172	2 637	44.44	119	2 408	4.94	1 304	7 643	17.06
15 Ostrobothnia	35	2 321	1.51	974	2 237	43.54	74	2 147	3.45	1 083	6 705	16.15
16 Central Ostrobothnia	6	1 027	0.58	400	1 003	39.88	47	960	4.90	453	2 990	15.15
17 Northern Ostrobothnia	26	5 458	0.48	2 027	5 191	39.05	258	5 200	4.96	2 311	15 849	14.58
18 Kainuu	11	1 076	1.02	524	1 152	45.49	61	1 036	5.89	596	3 264	18.26
19 Lapland	17	2 600	0.65	979	2 503	39.11	182	2 359	7.72	1 178	7 462	15.79
20 Åland Islands	1	343	0.29	75	360	20.83	4	289	1.38	80	992	8.06
<b>TOTALS</b>	<b>719</b>	<b>65 030</b>	<b>1.11</b>	<b>26 978</b>	<b>65 098</b>	<b>41.44</b>	<b>3 651</b>	<b>61 717</b>	<b>5.92</b>	<b>31 348</b>	<b>191 845</b>	<b>16.34</b>

\*Number of those successfully completing the exam.

\*\*Number of persons in age cohort.

**Fig. 3.1.5** Percentages of Matriculation Examination graduates among 18–20-year-olds, by region, 2007. Proportionately the greatest concentration of candidates came from Kainuu (18), the lowest from the Åland Islands (20), where a large number of young people take the Swedish “gymnasie examen” examination. Some 95% of the graduates are aged 18–20.



### 3.2 Grades

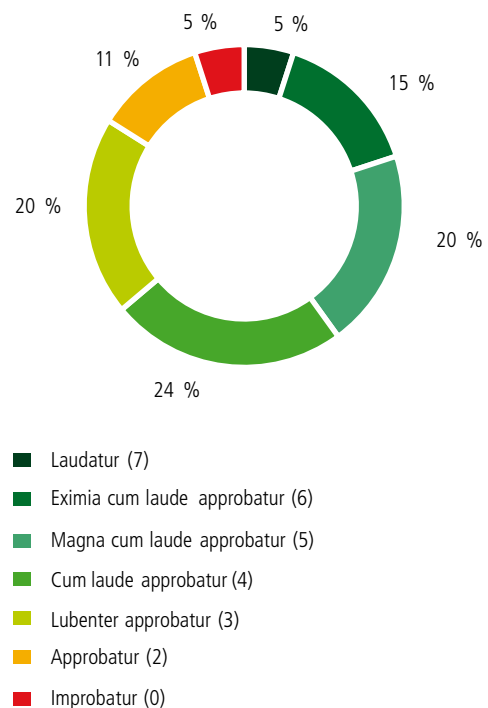
The Matriculation Examination Board renders decisions on the cutoff points (see Table 3.2.3) for each test after all the evaluation is completed. This is done separately after each examination period. Attempts are made to keep the proportionate shares of different grades at a somewhat similar level (see Tables 3.2.1 & 3.2.2), but in case more than 5% of the candidates receive the maximum points on a given test, cutoff points naturally cannot be set exactly as described. The proportionate shares of grades differ significantly from the target distribution mostly on tests with a small number of testees whereby it is not always possible to remain within the framework of the targets for cutoff points. This norm-referencing offers a commensurable method for measuring student skills on each test, also in regard to test comparability and equivalence over various examination periods.

The studies by candidate category of examinees' success in renewing tests reveal that the highest percentages of success are found among those renewing failed compulsory tests and those renewing failed supplementary tests (see Table 3.2.4 f.). On average roughly 45% of the test renewals produce a rise in the grade. Keeping in mind the level of the test, we find that a typical attempt at renewing brings about half a point of rise in the grade, both in spring and in autumn (see Table 3.2.5).

In 2007 graduates obtained an average of 4.22 grade points (see Table 3.2.6 f.), meaning somewhat over an average of *cum laude*. Those who graduated in spring received a clearly better average than autumn graduates, female candidates being on average more successful than males. Regionally the differences between grade-point averages were small (see Table 3.2.7 f.); the best results came from Southwestern Finland, 4.33. The lowest average was found in Southern Ostrobothnia, 4.06, ie. the range of grades was only one quarter of a grade point.

Since 1996 the highest grade, ie. *laudatur*, has been awarded on average to the top 5% on each test (see Table 3.2.8). From the spring of 1996 until the autumn of 2007 only one candidate has achieved 9 *laudatur*s in the tests belonging to the examination, while a total of twelve candidates have gathered 8 *laudatur*s, six of whom participated in the examination in 2007. Annually a few succeed in amassing 7 *laudatur*s; an average of 6,338 candidates collect at least one *laudatur* every year.

FIG. 3.2.1. Relative share of grades (target figures)



The Matriculation Examination Board makes decisions on cutoff points after the evaluation is completed, separately for each examination period. The distribution of grades are roughly as follows: L 5%, E 15%, M 20%, C 24%, B 20%, A 11%, I 5%. The figure above also shows in parentheses the points corresponding to each grade.

TABLE 3.2.1 National distributions of grades, spring examination 2007.

test	grade							totals
	L	E	M	C	B	A	I	
<i>mother tongue, Finnish</i>								
no.	1 074	2 804	5 805	7 362	3 637	1 624	552	22 858
%	4.7	12.3	25.4	32.2	15.9	7.1	2.4	100.0
male %	3.2	8.2	20.4	33.6	20.5	10.6	3.6	100.0
female %	5.8	15.2	29.1	31.2	12.6	4.6	1.5	100.0
<i>mother tongue, Swedish</i>								
no.	89	229	469	606	301	145	42	1 881
%	4.7	12.2	24.9	32.2	16.0	7.7	2.2	100.0
male %	3.0	7.8	21.4	31.5	22.0	10.6	3.6	100.0
female %	6.0	15.4	27.5	32.7	11.6	5.6	1.2	100.0
<i>mother tongue, Northern Sami</i>								
no.			3	1	2		1	7
%			42.9	14.3	28.6		14.3	100.0
male %			50.0		50.0			100.0
female %			40.0	20.0	20.0		20.0	100.0
<i>Swedish, A-level</i>								
no.	97	408	475	344	363	208	119	2 014
%	4.8	20.3	23.6	17.1	18.0	10.3	5.9	100.0
male %	3.0	16.5	22.0	21.1	21.8	12.2	3.5	100.0
female %	5.5	21.7	24.2	15.5	16.6	9.6	6.8	100.0
<i>Swedish, B-level</i>								
no.	604	1 629	2 285	3 196	3 014	2 061	807	13 596
%	4.4	12.0	16.8	23.5	22.2	15.2	5.9	100.0
male %	2.4	7.4	13.0	23.5	26.6	18.8	8.3	100.0
female %	5.5	14.4	18.8	23.5	19.8	13.3	4.7	100.0
<i>Finnish, A-level</i>								
no.	61	237	296	248	149	111	8	1 110
%	5.5	21.4	26.7	22.3	13.4	10.0	0.7	100.0
male %	4.2	20.3	27.6	25.3	11.5	9.9	1.2	100.0
female %	6.6	22.2	25.9	19.9	15.0	10.1	0.3	100.0
<i>Finnish, B-level</i>								
no.	3	16	25	50	61	52	20	227
%	1.3	7.1	11.0	22.0	26.9	22.9	8.8	100.0
male %	2.6	4.0	5.3	15.8	29.0	29.0	14.5	100.0
female %	0.7	8.6	13.9	25.2	25.8	19.9	5.9	100.0
<i>English, A-level</i>								
no.	1 289	4 355	5 535	6 043	5 264	2 509	780	25 775
%	5.0	16.9	21.5	23.4	20.4	9.7	3.0	100.0
male %	5.8	18.9	23.0	23.6	18.4	8.0	2.4	100.0
female %	4.4	15.4	20.4	23.4	21.9	11.0	3.5	100.0
<i>French, A-level</i>								
no.	27	95	94	78	69	33	2	398
%	6.8	23.9	23.6	19.6	17.3	8.3	0.5	100.0
male %	2.3	23.9	19.3	22.7	20.5	11.4		100.0
female %	8.1	23.9	24.8	18.7	16.5	7.4	0.7	100.0
<i>Spanish, A-level</i>								
no.	2	9	8	3	4	2		28
%	7.1	32.1	28.6	10.7	14.3	7.1		100.0
male %		20.0	20.0	40.0	20.0			100.0
female %	8.7	34.8	30.4	4.4	13.0	8.7		100.0



test	grade							totals
	L	E	M	C	B	A	I	
<i>German, A-level</i>								
no.	63	209	237	257	208	124	34	1 132
%	5.6	18.5	20.9	22.7	18.4	11.0	3.0	100.0
male %	6.0	18.3	22.8	21.0	18.9	11.7	1.5	100.0
female %	5.4	18.6	20.2	23.4	18.2	10.7	3.6	100.0
<i>Russian, A-level</i>								
no.	45	69	33	19	17	16	5	204
%	22.1	33.8	16.2	9.3	8.3	7.8	2.5	100.0
male %	16.2	41.9	12.2	9.5	10.8	8.1	1.4	100.0
female %	25.4	29.2	18.5	9.2	6.9	7.7	3.1	100.0
<i>Inari Sami, C-level</i>								
no.					1			1
%					100.0			100.0
male %								
female %					100.0			100.0
<i>Northern Sami, C-level</i>								
no.			1	3			1	5
%			20.0	60.0			20.0	100.0
male %								
female %			20.0	60.0			20.0	100.0
<i>English, C-level</i>								
no.	25	78	145	144	118	67	23	600
%	4.2	13.0	24.2	24.0	19.7	11.2	3.8	100.0
male %	4.7	15.5	25.2	25.5	18.4	7.9	2.9	100.0
female %	3.7	10.9	23.3	22.7	20.8	14.0	4.6	100.0
<i>French, C-level</i>								
no.	110	432	488	473	269	159	49	1 980
%	5.6	21.8	24.6	23.9	13.6	8.0	2.5	100.0
male %	3.7	19.3	20.4	28.9	14.8	10.4	2.6	100.0
female %	5.9	22.2	25.3	23.1	13.4	7.7	2.5	100.0
<i>Portuguese, C-level</i>								
no.	2	2	5	2	3			14
%	14.3	14.3	35.7	14.3	21.4			100.0
male %	20.0	20.0		20.0	40.0			100.0
female %	11.1	11.1	55.6	11.1	11.1			100.0
<i>Latin, C-level</i>								
no.	6	14	16	15	11	12	11	85
%	7.1	16.5	18.8	17.6	12.9	14.1	12.9	100.0
male %		24.0	12.0	24.0	12.0	20.0	8.0	100.0
female %	10.0	13.3	21.7	15.0	13.3	11.7	15.0	100.0
<i>Latin, broader syllabus</i>								
no.	3		1	1	2			7
%	42.9	0.0	14.3	14.3	28.6			100.0
male %	50.0		25.0	25.0				100.0
female %	33.3				66.7			100.0
<i>Spanish, C-level</i>								
no.	54	134	197	229	165	88	38	905
%	6.0	14.8	21.8	25.3	18.2	9.7	4.2	100.0
male %	6.0	12.6	11.9	29.8	20.5	14.6	4.6	100.0
female %	6.0	15.3	23.7	24.4	17.8	8.8	4.1	100.0

test	grade							totals
	L	E	M	C	B	A	I	
<i>German, C-level</i>								
no.	193	740	895	727	533	301	77	3 466
%	5.6	21.4	25.8	21.0	15.4	8.7	2.2	100.0
male %	4.2	16.5	23.3	23.0	18.5	11.3	3.3	100.0
female %	6.2	23.5	27.0	20.1	14.0	7.5	1.7	100.0
<i>Italian, C-level</i>								
no.	12	41	42	49	33	16	12	205
%	5.9	20.0	20.5	23.9	16.1	7.8	5.9	100.0
male %	7.7	26.9	11.5	19.2	15.4	7.7	11.6	100.0
female %	5.6	19.0	21.8	24.6	16.2	7.8	5.0	100.0
<i>Russian, C-level</i>								
no.	44	77	94	89	67	63	10	444
%	9.9	17.3	21.2	20.1	15.1	14.2	2.3	100.0
male %	7.8	15.5	13.6	19.4	19.4	20.4	3.9	100.0
female %	10.6	17.9	23.5	20.2	13.8	12.3	1.8	100.0
<i>mathematics, A-level</i>								
no.	643	1 838	2 333	2 805	2 051	1 175	955	11 800
%	5.4	15.6	19.8	23.8	17.4	10.0	8.1	100.0
male %	6.4	15.8	19.4	22.8	17.9	9.7	8.1	100.0
female %	4.3	15.3	20.3	24.9	16.8	10.3	8.1	100.0
<i>mathematics, C-level</i>								
no.	767	1 902	2 713	3 113	2 469	1 393	1 171	13 528
%	5.7	14.1	20.1	23.0	18.3	10.3	8.7	100.0
male %	4.1	12.3	19.4	23.5	19.6	11.3	9.8	100.0
female %	6.9	15.4	20.5	22.6	17.2	9.6	7.7	100.0
<i>biology</i>								
no.	212	630	861	1 079	977	503	177	4 439
%	4.8	14.2	19.4	24.3	22.0	11.3	4.0	100.0
male %	2.0	8.5	14.8	24.6	27.3	17.0	5.9	100.0
female %	6.0	16.7	21.4	24.2	19.7	8.9	3.1	100.0
<i>general ethics</i>								
no.	18	44	42	54	33	17	7	215
%	8.4	20.5	19.5	25.1	15.3	7.9	3.3	100.0
male %	1.3	16.0	20.0	25.3	20.0	10.7	6.7	100.0
female %	12.1	22.9	19.3	25.0	12.9	6.4	1.4	100.0
<i>philosophy</i>								
no.	44	164	197	211	187	101	51	955
%	4.6	17.2	20.6	22.1	19.6	10.6	5.3	100.0
male %	3.1	14.1	17.5	23.0	21.7	13.4	7.2	100.0
female %	5.9	19.9	23.4	21.3	17.7	8.1	3.7	100.0
<i>physics</i>								
no.	260	715	972	1 370	955	499	214	4 985
%	5.2	14.3	19.5	27.5	19.2	10.0	4.3	100.0
male %	5.3	14.2	18.8	27.3	19.6	10.3	4.5	100.0
female %	4.7	14.8	22.2	28.3	17.4	9.1	3.5	100.0
<i>geography</i>								
no.	249	806	906	1 234	881	506	208	4 790
%	5.2	16.8	18.9	25.8	18.4	10.6	4.3	100.0
male %	2.3	12.3	16.7	27.0	22.8	13.3	5.5	100.0
female %	8.3	21.7	21.3	24.5	13.6	7.6	3.1	100.0

test	grade							totals
	L	E	M	C	B	A	I	
<i>history</i>								
no.	293	853	1 170	1 476	967	672	298	5 729
%	5.1	14.9	20.4	25.8	16.9	11.7	5.2	100.0
male %	3.0	11.7	18.4	26.2	19.5	14.6	6.5	100.0
female %	8.2	19.6	23.4	25.1	13.0	7.5	3.3	100.0
<i>chemistry</i>								
no.	230	585	803	911	813	507	203	4 052
%	5.7	14.4	19.8	22.5	20.1	12.5	5.0	100.0
male %	5.8	13.7	18.9	22.1	19.4	14.1	6.0	100.0
female %	5.5	15.5	21.0	23.0	21.0	10.3	3.7	100.0
<i>psychology</i>								
no.	320	973	1 566	1 575	1 289	655	263	6 641
%	4.8	14.7	23.6	23.7	19.4	9.9	4.0	100.0
male %	2.1	8.9	15.7	23.1	24.4	16.5	9.4	100.0
female %	5.4	15.8	25.2	23.9	18.4	8.6	2.9	100.0
<i>Evangelical-Lutheran religion</i>								
no.	156	501	701	837	673	278	150	3 296
%	4.7	15.2	21.3	25.4	20.4	8.4	4.6	100.0
male %	2.0	9.5	16.0	23.6	26.8	13.6	8.7	100.0
female %	5.6	17.1	23.0	26.0	18.3	6.7	3.2	100.0
<i>Orthodox religion</i>								
no.	2	6	7	9	8	2	1	35
%	5.7	17.1	20.0	25.7	22.9	5.7	2.9	100.0
male %	11.1	22.2	22.2	11.1	33.3			100.0
female %	3.9	15.4	19.2	30.8	19.2	7.7	3.8	100.0
<i>social studies</i>								
no.	162	583	772	758	680	392	169	3 516
%	4.6	16.6	22.0	21.6	19.3	11.1	4.8	100.0
male %	4.0	14.3	20.4	20.7	21.0	12.4	7.3	100.0
female %	5.3	19.0	23.7	22.5	17.6	9.8	2.2	100.0
<i>health education</i>								
no.	212	706	892	1 189	757	550	184	4 490
%	4.7	15.7	19.9	26.5	16.9	12.2	4.1	100.0
male %	1.6	6.9	13.8	25.3	20.8	21.8	9.8	100.0
female %	5.6	18.1	21.5	26.8	15.8	9.7	2.6	100.0
<i>Swedish as a second language</i>								
no.		1	1					2
%		50.0	50.0					100.0
male %		50.0	50.0					100.0
female %								
<i>Finnish as a second language</i>								
no.	18	53	76	95	48	35	20	345
%	5.2	15.4	22.0	27.5	13.9	10.1	5.8	100.0
male %	2.7	11.6	22.5	26.5	18.4	8.8	9.5	100.0
female %	7.1	18.2	21.7	28.3	10.6	11.1	3.0	100.0

TABLE 3.2.2 National distributions of grades, autumn examination 2007.

test	grade							totals
	L	E	M	C	B	A	I	
<i>mother tongue, Finnish</i>								
no.	175	430	1 083	1 741	1 106	661	328	5 524
%	3.2	7.8	19.6	31.5	20.0	12.0	5.9	100.0
male %	2.0	4.2	13.3	30.7	24.0	17.0	8.8	100.0
female %	4.1	10.6	24.4	32.2	17.0	8.1	3.7	100.0
<i>mother tongue, Swedish</i>								
no.	8	26	78	90	59	43	29	333
%	2.4	7.8	23.4	27.0	17.7	12.9	8.7	100.0
male %		3.9	17.3	27.6	18.6	19.2	13.5	100.0
female %	4.5	11.3	28.8	26.6	17.0	7.3	4.5	100.0
<i>mother tongue, Northern Sami</i>								
no.			3	2		1		6
%			50.0	33.3		16.7		100.0
male %								
female %			50.0	33.3		16.7		100.0
<i>Swedish, A-level</i>								
no.	55	184	217	248	145	131	121	1 101
%	5.0	16.7	19.7	22.5	13.2	11.9	11.0	100.0
male %	5.7	15.9	22.9	21.7	13.4	11.2	9.2	100.0
female %	4.7	17.0	18.4	22.9	13.1	12.2	11.7	100.0
<i>Swedish, B-level</i>								
no.	518	1 672	2 097	2 519	2 002	1 054	606	10 468
%	4.9	16.0	20.0	24.1	19.1	10.1	5.8	100.0
male %	3.5	11.7	18.7	25.2	21.0	12.0	7.9	100.0
female %	5.7	18.1	20.7	23.5	18.2	9.1	4.7	100.0
<i>Finnish, A-level</i>								
no.	71	364	375	268	112	74	22	1 286
%	5.5	28.3	29.2	20.8	8.7	5.8	1.7	100.0
male %	3.8	27.0	31.7	20.8	7.9	6.8	2.1	100.0
female %	6.8	29.2	27.4	20.9	9.3	5.0	1.5	100.0
<i>Finnish, B-level</i>								
no.	3	13	13	60	87	78	26	280
%	1.1	4.6	4.6	21.4	31.1	27.9	9.3	100.0
male %		1.0	4.1	17.5	33.0	26.8	17.5	100.0
female %	1.6	6.6	4.9	23.5	30.1	28.4	4.9	100.0
<i>English, A-level</i>								
no.	781	2 594	3 046	3 466	2 964	1 407	598	14 856
%	5.3	17.5	20.5	23.3	20.0	9.5	4.0	100.0
male %	6.7	19.5	22.4	24.2	18.0	6.9	2.5	100.0
female %	4.1	15.9	19.0	22.7	21.5	11.5	5.3	100.0
<i>French, A-level</i>								
no.	7	23	22	17	20	14	2	105
%	6.7	21.9	21.0	16.2	19.1	13.3	1.9	100.0
male %	4.6	18.2	27.3	9.1	22.7	18.2	0.0	100.0
female %	7.2	22.9	19.3	18.1	18.1	12.1	2.4	100.0
<i>Spanish, A-level</i>								
no.	2	4	7	8		1		22
%	9.1	18.2	31.8	36.4		4.5		100.0
male %	12.5	12.5	25.0	20.0			30.0	100.0
female %	7.1	21.4	35.7	28.6		7.1		100.0

test	grade							totals
	L	E	M	C	B	A	I	
<i>German, A-level</i>								
no.	26	85	110	101	89	48	19	478
%	5.4	17.8	23.0	21.1	18.6	10.0	4.0	100.0
male %	4.1	20.6	21.2	20.6	19.2	11.0	3.4	100.0
female %	6.0	16.6	23.8	21.4	18.4	9.6	4.2	100.0
<i>Russian, A-level</i>								
no.	32	53	43	13	3	4		148
%	21.6	35.8	29.1	8.8	2.0	2.7		100.0
male %	23.4	29.8	23.4	17.0	4.3	2.1		100.0
female %	20.8	38.6	31.7	5.0	1.0	3.0		100.0
<i>Inari Sami, C-level</i>								
no.								
%								
male %								
female %								
<i>Northern Sami, C-level</i>								
no.		1		2	3			6
%		16.7		33.3	50.0			100.0
male %					100.0			100.0
female %		20.0		40.0	40.0			100.0
<i>English, C-level</i>								
no.	10	54	76	90	58	37	16	341
%	2.9	15.8	22.3	26.4	17.0	10.9	4.7	100.0
male %	3.5	20.0	22.8	24.8	17.9	6.2	4.8	100.0
female %	2.6	12.8	21.9	27.6	16.3	14.3	4.6	100.0
<i>French, C-level</i>								
no.	19	73	79	78	57	32	12	350
%	5.4	20.9	22.6	22.3	16.3	9.1	3.4	100.0
male %	6.0	32.0	22.0	14.0	14.0	12.0	0.0	100.0
female %	5.3	19.0	22.7	23.7	16.7	8.7	4.0	100.0
<i>Portuguese, C-level</i>								
no.	1	2	5	4	2	1		15
%	6.7	13.3	33.3	26.7	13.3	6.7		100.0
male %	20.0		20.0	60.0				100.0
female %		20.0	40.0	10.0	20.0	10.0		100.0
<i>Latin, C-level</i>								
no.	2	2	5	3	4		2	18
%	11.1	11.1	27.8	16.7	22.2		11.1	100.0
male %	16.7		33.3	16.7	33.3		0.0	100.0
female %	8.3	16.7	25.0	16.7	16.7		16.7	100.0
<i>Latin, broader syllabus</i>								
no.	2	2	1	1	1			7
%	28.6	28.6	14.3	14.3	14.3			100.0
male %	33.3	33.3			33.3		0.0	100.0
female %	25.0	25.0	25.0	25.0			0.0	100.0
<i>Spanish, C-level</i>								
no.	17	40	43	53	42	20	4	219
%	7.8	18.3	19.6	24.2	19.2	9.1	1.8	100.0
male %	4.9	7.3	19.5	26.8	19.5	22.0		100.0
female %	8.4	20.8	19.7	23.6	19.1	6.2	2.2	100.0

test	grade							totals
	L	E	M	C	B	A	I	
<i>German, C-level</i>								
no.	50	166	209	188	135	91	27	866
%	5.8	19.2	24.1	21.7	15.6	10.5	3.1	100.0
male %	3.2	14.3	20.3	23.8	17.1	16.1	5.2	100.0
female %	7.1	21.6	26.0	20.7	14.8	7.8	2.1	100.0
<i>Italian, C-level</i>								
no.	4	13	13	16	7	12	3	68
%	5.9	19.1	19.1	23.5	10.3	17.6	4.4	100.0
male %	15.4	30.8	15.4	15.4	7.7	7.7	7.7	100.0
female %	3.6	16.4	20.0	25.5	10.9	20.0	3.6	100.0
<i>Russian, C-level</i>								
no.	10	20	16	13	11	5	4	79
%	12.7	25.3	20.3	16.5	13.9	6.3	5.1	100.0
male %	9.5	28.6	9.5	23.8	19.1	4.8	4.8	100.0
female %	13.8	24.1	24.1	13.8	12.1	6.9	5.2	100.0
<i>mathematics, A-level</i>								
no.	63	137	178	198	255	193	180	1 204
%	5.2	11.4	14.8	16.4	21.2	16.0	15.0	100.0
male %	6.5	11.3	13.0	16.9	20.5	15.8	16.1	100.0
female %	3.1	11.5	17.7	15.7	22.4	16.4	13.1	100.0
<i>mathematics, C-level</i>								
no.	268	569	742	853	983	1 077	705	5 197
%	5.2	10.9	14.3	16.4	18.9	20.7	13.6	100.0
male %	3.9	8.5	12.7	15.6	20.9	22.8	15.8	100.0
female %	6.2	12.8	15.5	17.1	17.4	19.2	11.9	100.0
<i>biology</i>								
no.	158	351	520	737	625	411	128	2 930
%	5.4	12.0	17.7	25.2	21.3	14.0	4.4	100.0
male %	4.3	11.6	16.4	24.5	22.4	15.5	5.4	100.0
female %	6.0	12.2	18.5	25.5	20.7	13.2	3.8	100.0
<i>general ethics</i>								
no.	5	14	27	23	21	12	4	106
%	4.7	13.2	25.5	21.7	19.8	11.3	3.8	100.0
male %	7.5	12.5	20.0	27.5	17.5	10.0	5.0	100.0
female %	3.0	13.6	28.8	18.2	21.2	12.1	3.0	100.0
<i>philosophy</i>								
no.	40	103	155	193	149	80	33	753
%	5.3	13.7	20.6	25.6	19.8	10.6	4.4	100.0
male %	4.2	12.7	18.9	27.0	20.6	10.1	6.5	100.0
female %	6.3	14.6	22.1	24.4	19.1	11.1	2.5	100.0
<i>physics</i>								
no.	27	66	94	106	133	113	90	629
%	4.3	10.5	14.9	16.9	21.1	18.0	14.3	100.0
male %	4.1	10.9	13.2	17.2	21.5	18.2	15.0	100.0
female %	4.9	9.0	22.1	15.6	19.7	17.2	11.5	100.0
<i>geography</i>								
no.	154	440	528	784	509	306	139	2 860
%	5.4	15.4	18.5	27.4	17.8	10.7	4.9	100.0
male %	3.2	11.2	16.4	28.9	20.3	13.1	6.9	100.0
female %	8.0	20.2	20.9	25.7	14.9	7.9	2.5	100.0

test	grade							totals
	L	E	M	C	B	A	I	
<i>history</i>								
no.	176	528	708	903	834	390	195	3 734
%	4.7	14.1	19.0	24.2	22.3	10.4	5.2	100.0
male %	4.2	12.4	17.8	24.7	23.0	11.6	6.3	100.0
female %	5.5	16.7	20.6	23.4	21.4	8.7	3.7	100.0
<i>chemistry</i>								
no.	72	230	281	338	281	167	71	1 440
%	5.0	16.0	19.5	23.5	19.5	11.6	4.9	100.0
male %	4.7	16.1	20.5	22.3	17.8	12.7	5.9	100.0
female %	5.4	15.8	18.0	25.2	21.9	10.0	3.6	100.0
<i>psychology</i>								
no.	141	482	613	712	518	301	132	2 899
%	4.9	16.6	21.1	24.6	17.9	10.4	4.6	100.0
male %	2.7	9.6	16.2	23.7	21.2	17.1	9.5	100.0
female %	5.4	18.3	22.3	24.8	17.1	8.8	3.4	100.0
<i>Evangelical-Lutheran religion</i>								
no.	95	228	303	387	309	215	87	1 624
%	5.8	14.0	18.7	23.8	19.0	13.2	5.4	100.0
male %	4.9	8.3	12.0	24.5	21.0	18.1	11.3	100.0
female %	6.2	16.0	20.9	23.6	18.4	11.6	3.4	100.0
<i>Orthodox religion</i>								
no.	1	2	5	4	2	1	2	17
%	5.9	11.8	29.4	23.5	11.8	5.9	11.8	100.0
male %	20.0	40.0	20.0				20.0	100.0
female %		16.7	25.0	25.0	16.7	8.3	8.3	100.0
<i>social studies</i>								
no.	91	219	317	342	317	167	75	1 528
%	6.0	14.3	20.7	22.4	20.7	10.9	4.9	100.0
male %	5.3	13.0	19.7	21.6	21.3	13.2	5.9	100.0
female %	6.7	15.7	21.9	23.2	20.1	8.5	3.9	100.0
<i>health education</i>								
no.	168	446	725	959	607	472	137	3 514
%	4.8	12.7	20.6	27.3	17.3	13.4	3.9	100.0
male %	1.2	6.3	15.0	24.0	21.0	23.5	8.9	100.0
female %	5.8	14.6	22.3	28.3	16.2	10.5	2.4	100.0
<i>Swedish as a second language</i>								
no.				1				1
%				100.0				100.0
male %				100.0				100.0
female %								
<i>Finnish as a second language</i>								
no.	7	28	25	35	34	18	18	165
%	4.2	17.0	15.2	21.2	20.6	10.9	10.9	100.0
male %	1.5	22.1	11.8	23.5	16.2	14.7	10.3	100.0
female %	6.2	13.4	17.5	19.6	23.7	8.3	11.3	100.0

TABLE 3.2.3 Cutoff points, 2007.

test	L	E	grade				maximum no. of points
			M	C	B	A	
<i>mother tongue, Finnish</i>							
spring exam	90	77	62	45	33	22	104
autumn exam	90	77	62	44	32	21	104
<i>mother tongue, Swedish</i>							
spring exam	95	81	65	47	35	19	104
autumn exam	91	80	64	45	33	21	104
<i>mother tongue, Northern Sami</i>							
spring exam	60	50	40	30	20	10	60
autumn exam	60	50	40	30	20	10	60
<i>Swedish, A-level</i>							
spring exam	272	245	221	201	165	120	299
autumn exam	274	249	225	190	158	112	299
<i>Swedish, B-level</i>							
spring exam	262	236	210	178	144	110	299
autumn exam	269	243	216	182	147	118	299
<i>Finnish, A-level</i>							
spring exam	275	257	239	218	192	139	299
autumn exam	282	261	239	209	187	147	299
<i>Finnish, B-level</i>							
spring exam	268	238	219	190	159	115	299
autumn exam	261	236	214	188	157	111	299
<i>English, A-level</i>							
spring exam	272	250	228	201	166	127	299
autumn exam	273	253	232	202	158	120	299
<i>Spanish, A-level</i>							
spring exam	278	262	229	209	180	134	299
autumn exam	275	260	240	213	175	140	299
<i>French, A-level</i>							
spring exam	285	261	242	220	187	140	299
autumn exam	284	264	240	217	177	138	299
<i>German, A-level</i>							
spring exam	277	249	222	196	164	119	299
autumn exam	282	254	228	197	159	120	299
<i>Russian, A-level</i>							
spring exam	275	245	220	190	160	125	299
autumn exam	276	260	230	195	160	130	299
<i>Inari Sami, C-level</i>							
spring exam	200	175	155	135	115	100	209
autumn exam							209
<i>Northern Sami, C-level</i>							
spring exam	195	182	165	140	120	100	209
autumn exam	195	182	165	140	120	100	209
<i>English, C-level</i>							
spring exam	265	240	210	180	150	120	299
autumn exam	267	237	210	180	150	117	299
<i>French, C-level</i>							
spring exam	279	254	230	201	171	130	299
autumn exam	281	257	231	201	171	132	299



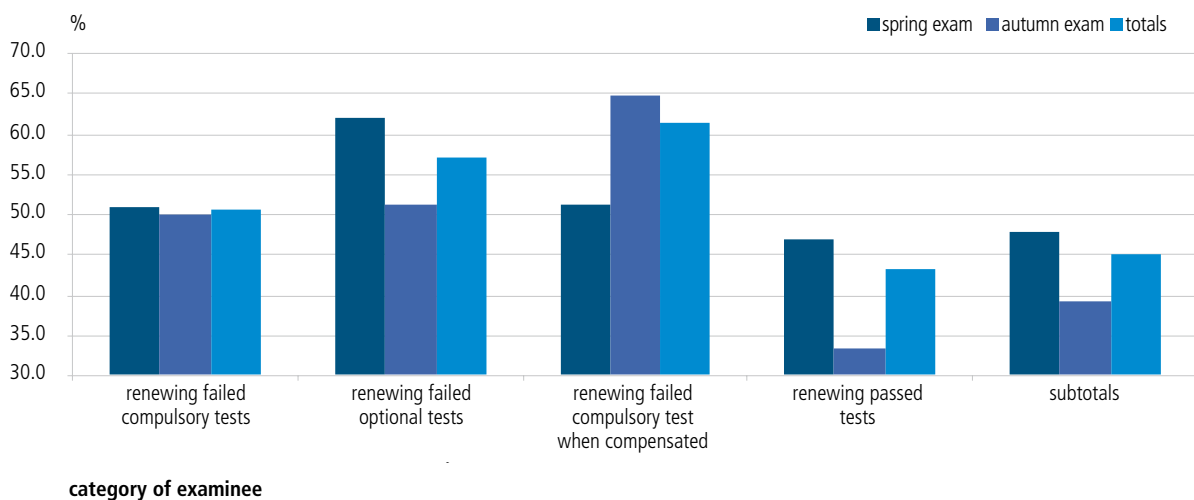
test	grade						maximum no. of points
	L	E	M	C	B	A	
<i>Portuguese, C-level</i>							
spring exam	185	171	161	150	120	100	209
autumn exam	190	178	166	155	120	100	209
<i>Latin, C-level</i>							
spring exam	197	184	162	146	120	100	209
autumn exam	197	184	160	144	120	100	209
<i>Latin, broader syllabus</i>							
spring exam	197	184	162	143	120	100	209
autumn exam	197	182	162	143	120	100	209
<i>Spanish, C-level</i>							
spring exam	283	265	238	204	172	136	299
autumn exam	289	275	257	228	184	132	299
<i>German, C-level</i>							
spring exam	277	251	224	196	163	120	299
autumn exam	283	257	231	200	167	133	299
<i>Italian, C-level</i>							
spring exam	283	265	237	199	169	130	299
autumn exam	290	272	250	207	177	130	299
<i>Russian, C-level</i>							
spring exam	280	258	228	194	170	134	299
autumn exam	284	265	235	195	165	125	299
<i>mathematics, A-level</i>							
spring exam	56	43	32	22	15	10	66
autumn exam	52	37	27	20	13	8	66
<i>mathematics, C-level</i>							
spring exam	53	43	33	23	15	10	60
autumn exam	46	36	28	21	14	7	60
<i>Evangelical-Lutheran religion</i>							
spring exam	35	29	24	19	14	10	42
autumn exam	34	28	24	19	14	9	42
<i>Orthodox religion</i>							
spring exam	31	26	21	17	12	10	42
autumn exam	34	26	18	14	11	7	42
<i>general ethics</i>							
spring exam	35	28	24	19	15	10	42
autumn exam	35	29	23	19	15	9	42
<i>philosophy</i>							
spring exam	34	26	21	16	11	7	42
autumn exam	34	27	22	17	12	7	42
<i>psychology</i>							
spring exam	32	26	21	17	13	9	42
autumn exam	32	25	20	15	11	7	42
<i>history</i>							
spring exam	34	28	23	18	14	10	42
autumn exam	35	29	24	19	14	10	42
<i>social studies</i>							
spring exam	35	29	24	20	16	12	42
autumn exam	34	29	25	21	16	11	42
<i>physics</i>							
spring exam	43	35	28	20	14	9	54
autumn exam	38	30	22	16	11	7	54

test	L	E	grade				maximum
			M	C	B	A	no. of points
<i>chemistry</i>							
spring exam	44	38	31	23	15	8	42
autumn exam	44	38	32	24	16	10	54
<i>biology</i>							
spring exam	42	36	31	25	18	12	54
autumn exam	42	36	30	23	16	9	54
<i>geography</i>							
spring exam	33	27	23	18	14	10	42
autumn exam	33	27	23	18	14	10	42
<i>health education</i>							
spring exam	31	24	20	16	13	9	42
autumn exam	30	25	21	17	14	10	42
<i>Swedish as a second language</i>							
spring exam	180	165	145	130	115	95	209
autumn exam	185	165	145	130	115	95	209
<i>Finnish as a second language</i>							
spring exam	184	170	154	130	114	92	209
autumn exam	184	167	151	129	112	90	209

**TABLE 3.2.4.** Registrations to renew tests, and success in raising grades, 2007.

exam	category of candidates									
	renewing failed compulsory tests		renewing failed optional tests		renewing failed compulsory test when compensated		renewing passed tests		subtotals	
	no.	%	no.	%	no.	%	no.	%	no.	%
spring exam	2 541	51.0	208	62.0	41	51.2	16 388	47.0	19 178	47.7
autumn exam	2 886	50.0	178	51.1	133	64.7	6 175	33.4	9 372	39.3
<b>totals</b>	<b>5 427</b>	<b>50.5</b>	<b>386</b>	<b>57.0</b>	<b>174</b>	<b>61.5</b>	<b>22 563</b>	<b>43.3</b>	<b>28 550</b>	<b>44.9</b>

**FIG. 3.2.2** Success of examinees in raising grades on renewed tests 2007.



On average some 45% of test renewers managed to raise their grades. The ones with the highest success rates were those who renewed failed compulsory compensated tests and those who renewed failed compulsory tests.



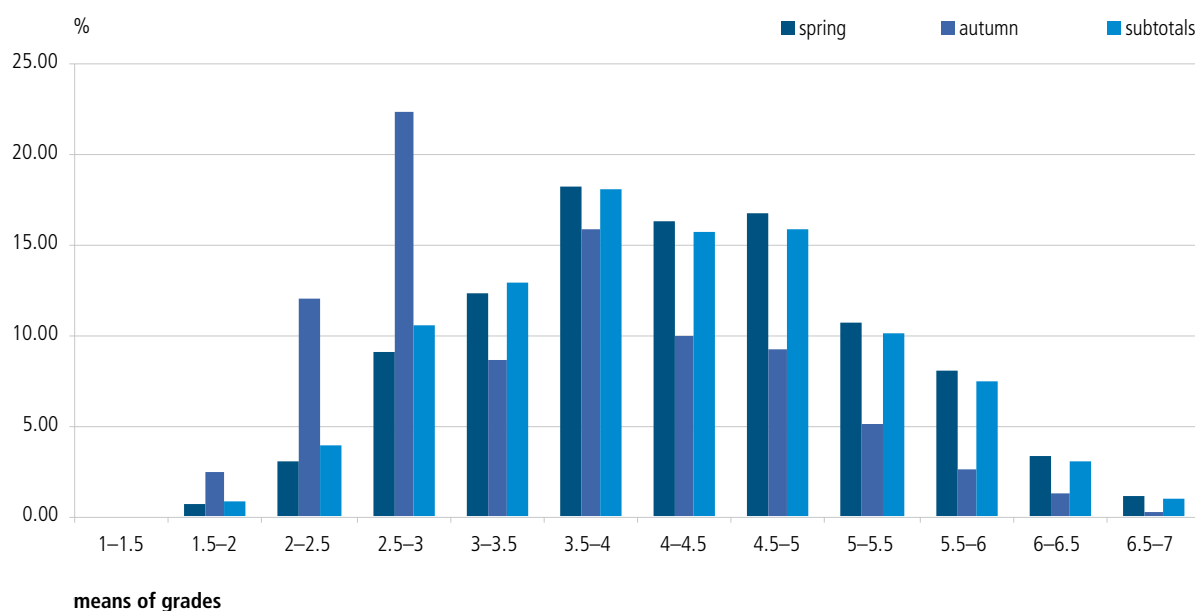
test	difference in grade points received, test/retest													subtotals		
	-6	-5	-4	-3	-2	-1	0	1	2	3	4	5	6	7	no.	av.
<i>English, C-level</i>																
spring exam							24	5	5						34	0.4
autumn exam							11	4	13						28	1.1
subtotals							35	9	18						62	0.7
<i>French, C-level</i>																
spring exam						6	16	14	3	1					40	0.4
autumn exam						2	23	10	3		2				40	0.6
subtotals						8	39	24	6	1	2				80	0.5
<i>Portuguese, C-level</i>																
spring exam							1			1					2	1.5
autumn exam																
subtotals							1			1					2	1.5
<i>Latin, C-level</i>																
spring exam				1					3						4	0.0
autumn exam						1			1						2	-0.5
subtotals				1	1				4						6	-0.2
<i>Latin, broader syllabus</i>																
spring exam							1								1	0.0
autumn exam									1						1	1.0
subtotals							1	1							2	0.5
<i>Spanish, C-level</i>																
spring exam					2	1	12	13		1					29	0.4
autumn exam						4	6	3	1						14	0.1
subtotals					2	5	18	16	1	1					43	0.3
<i>German, C-level</i>																
spring exam				1		6	47	57	12						123	0.6
autumn exam				1	2	3	19	6	3						34	0.1
subtotals				2	2	9	66	63	15						157	0.5
<i>Italian, C-level</i>																
spring exam					1		7	1							9	-0.1
autumn exam					1	1	5	1							8	-0.3
subtotals					2	1	12	2							17	-0.2
<i>Russian, C-level</i>																
spring exam							4	2							6	0.3
autumn exam						1	8								9	-0.1
subtotals						1	12	2							15	0.1
<i>mathematics, A-level</i>																
spring exam			4	9	26	47	190	94	61	20	6		1		458	0.4
autumn exam			1	20	30	47	229	176	124	59	19	2			707	0.7
subtotals			5	29	56	94	419	270	185	79	25	2	1		1 165	0.6
<i>mathematics, C-level</i>																
spring exam			3	20	65	134	534	265	293	137	31	6	2		1 490	0.7
autumn exam			6	28	84	122	505	112	292	68	14	2			1 233	0.5
subtotals			9	48	149	256	1 039	377	585	205	45	8	2		2 723	0.6
<i>philosophy</i>																
spring exam		2			4	6	27	21	16	3	2	1	1		83	0.7
autumn exam				3	3	5	18	12	17	1	1				60	0.6
subtotals		2		3	7	11	45	33	33	4	3	1	1		143	0.6
<i>psychology</i>																
spring exam			3	8	27	54	160	122	67	17	6	1			465	0.4
autumn exam		1	3	12	13	43	130	69	66	25	9				371	0.5
subtotals		1	6	20	40	97	290	191	133	42	15	1			836	0.5

test	difference in grade points received, test/retest														subtotals	
	-6	-5	-4	-3	-2	-1	0	1	2	3	4	5	6	7	no.	av.
<i>history</i>																
spring exam		3	4	12	25	50	241	200	120	30	10				695	0.6
autumn exam			8	14	30	51	133	56	65	30	8				395	0.3
subtotals		3	12	26	55	101	374	256	185	60	18				1 090	0.5
<i>physics</i>																
spring exam				4	14	27	64	29	23	2	1	1			165	0.1
autumn exam			1	3	17	25	104	43	39	15	1				248	0.4
subtotals			1	7	31	52	168	72	62	17	2	1			413	0.3
<i>biology</i>																
spring exam		1		2	26	76	248	193	90	20	4	2			662	0.5
autumn exam			3	10	26	53	130	51	43	3					319	-0.0
subtotals		1	3	12	52	129	378	244	133	23	4	2			981	0.3
<i>Evangelical-Lutheran religion</i>																
spring exam			2	5	16	31	97	71	39	17	1		1		280	0.4
autumn exam			1	8	10	32	73	41	37	9	2	1			214	0.4
subtotals			3	13	26	63	170	112	76	26	3	1	1		494	0.4
<i>Orthodox religion</i>																
spring exam								1	1						2	1.5
autumn exam							1								1	0.0
subtotals							1	1	1						3	1.0
<i>general ethics</i>																
spring exam					1	4	4	3	4	1					17	0.5
autumn exam					1	5	6	2				1			15	0.0
subtotals					2	9	10	5	4	1		1			32	0.3
<i>social studies</i>																
spring exam			1	4	4	20	50	40	17	5	1				142	0.3
autumn exam			1	3	12	23	90	34	39	9	1			1	213	0.4
subtotals			2	7	16	43	140	74	56	14	2				354	0.4
<i>chemistry</i>																
spring exam			2	5	15	57	174	141	74	13					481	0.5
autumn exam				2	7	38	102	55	39	5	1				249	0.4
subtotals			2	7	22	95	276	196	113	18	1				730	0.4
<i>geography</i>																
spring exam			2	8	23	44	195	154	96	32	13				567	0.7
autumn exam			3	13	28	40	111	31	43	21	3	1			294	0.2
subtotals			5	21	51	84	306	185	139	53	16	1			861	0.5
<i>health education</i>																
spring exam																
autumn exam				2	23	40	117	72	60	16	3	1			334	0.5
subtotals				2	23	40	117	72	60	16	3	1			334	0.5
<i>Finnish as a second language</i>																
spring exam					1	4	30	9	9	3					56	0.5
autumn exam				1	1	6	26	12	7	1					54	0.3
subtotals				1	2	10	56	21	16	4					110	0.4
<b>SUBTOTALS OF TESTS</b>																
spring exam	1	6	33	113	421	1405	8052	6272	2287	474	96	13	5		19178	0.5
autumn exam		1	28	133	379	921	4228	1655	1550	381	86	9		1	9372	0.4
<b>totals</b>	<b>1</b>	<b>7</b>	<b>61</b>	<b>246</b>	<b>800</b>	<b>2326</b>	<b>12280</b>	<b>7927</b>	<b>3837</b>	<b>855</b>	<b>182</b>	<b>22</b>	<b>5</b>	<b>1</b>	<b>28550</b>	<b>0.5</b>

**TABLE 3.2.6** Distributions of means of grades on the tests in the Matriculation Examination, 2007.

grade points	spring exam		autumn exam		subtotals	
	no.	%	no.	%	no.	%
<i>1–1.5</i>						
male	3	0.02			3	0.02
female	2	0.01			2	0.01
subtotals	5	0.02			5	0.02
<i>1.5–2</i>						
male	93	0.76	46	2.83	139	1.00
female	107	0.62	42	2.28	149	0.78
subtotals	200	0.68	88	2.54	288	0.87
<i>2–2.5</i>						
male	433	3.53	208	12.79	641	4.62
female	482	2.78	212	11.52	694	3.62
subtotals	915	3.09	420	12.11	1 335	4.04
<i>2.5–3</i>						
male	1 347	10.99	418	25.71	1 765	12.72
female	1 371	7.90	359	19.50	1 730	9.02
subtotals	2 718	9.18	777	22.41	3 495	10.57
<i>3–3.5</i>						
male	1 693	13.82	353	21.71	2 046	14.74
female	1 949	11.24	287	15.59	2 236	11.65
subtotals	3 642	12.30	300	8.65	4 282	12.95
<i>3.5–4</i>						
male	2 436	19.88	251	15.44	2 687	19.36
female	2 970	17.12	300	16.30	3 270	17.04
subtotals	5 406	18.26	551	15.89	5 957	18.02
<i>4–4.5</i>						
male	2 072	16.91	143	8.79	2 215	15.96
female	2 780	16.03	204	11.08	2 984	15.55
subtotals	4 852	16.39	347	10.01	5 199	15.72
<i>4.5–5</i>						
male	1 948	15.90	117	7.20	2 065	14.88
female	3 000	17.30	202	10.97	3 202	16.69
subtotals	4 948	16.72	319	9.20	5 267	15.93
<i>5–5.5</i>						
male	1 060	8.65	57	3.51	1 117	8.05
female	2 124	12.25	120	6.52	2 244	11.70
subtotals	3 184	10.76	177	5.11	3 361	10.16
<i>5.5–6</i>						
male	750	6.12	22	1.35	772	5.56
female	1 632	9.41	71	3.86	1 703	8.88
subtotals	2 382	8.05	93	2.68	2 475	7.49
<i>6–6.5</i>						
male	308	2.51	10	0.62	318	2.29
female	686	3.96	35	1.90	721	3.76
subtotals	994	3.36	45	1.30	1 039	3.14
<i>6.5–7</i>						
male	111	0.91	1	0.06	112	0.81
female	242	1.40	9	0.49	251	1.31
subtotals	353	1.19	10	0.29	363	1.10
<b>SUBTOTALS</b>						
<b>male</b>	<b>12 254</b>	<b>100.00</b>	<b>1 626</b>	<b>100.00</b>	<b>13 880</b>	<b>100.00</b>
<b>female</b>	<b>17 345</b>	<b>100.00</b>	<b>1 841</b>	<b>100.00</b>	<b>19 186</b>	<b>100.00</b>
<b>totals</b>	<b>29 599</b>	<b>100.00</b>	<b>3 467</b>	<b>100.00</b>	<b>33 066</b>	<b>100.00</b>

FIG. 3.2.3 Percentage distribution of means of graduates' grade points on the Matriculation Examination, 2007.

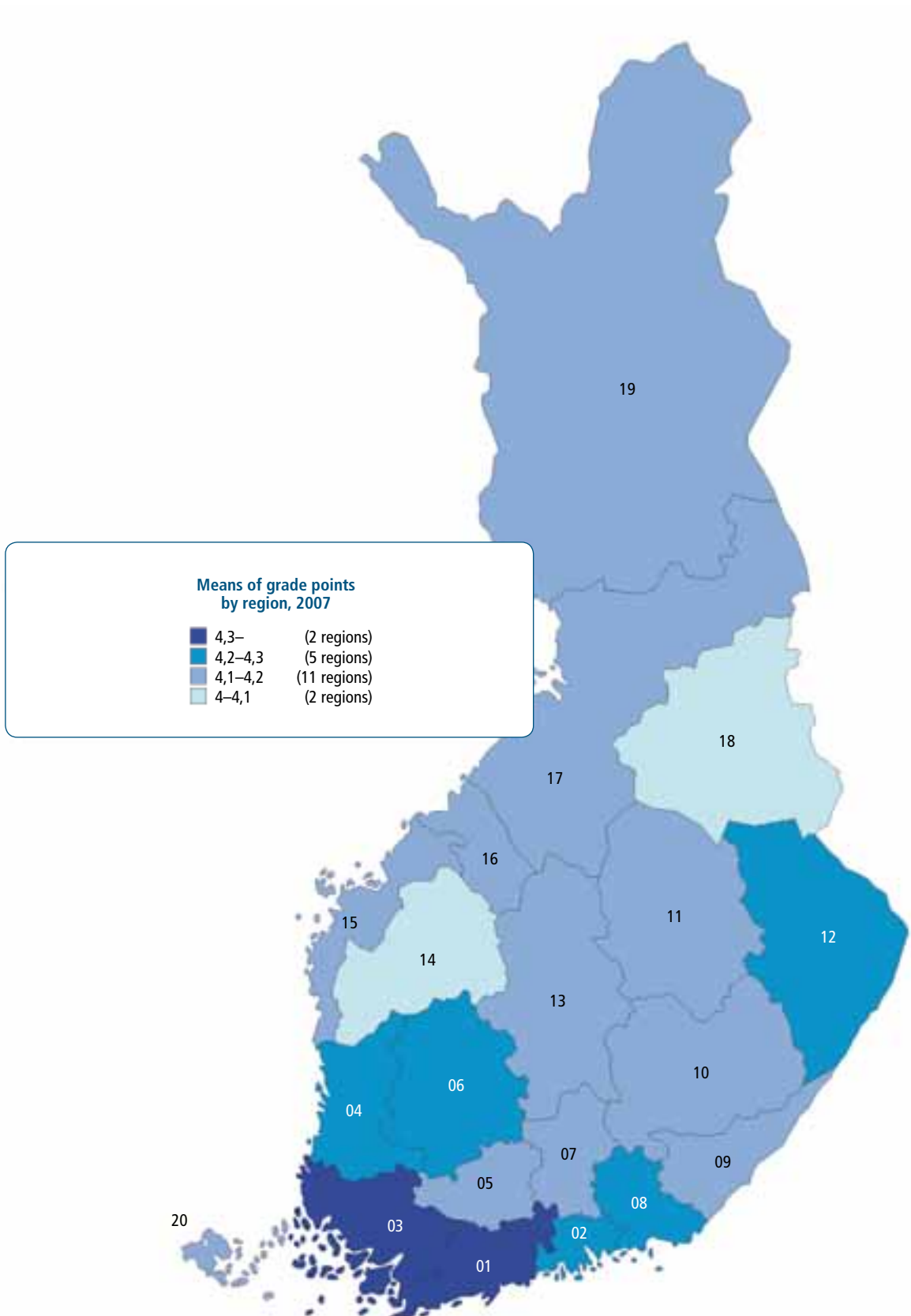


*Candidates completing their examination in the spring exam clearly outperform those finishing in the autumn exam period. The difference of the means is a little over 0.7 grade points.*

TABLE 3.2.7 Distribution of means of grade points on tests in the Matriculation Examination, by region, 2007.

region	spring exam		autumn exam		subtotals	
	passed	$\bar{m}$ of grades	passed	$\bar{m}$ of grades	passed	$\bar{m}$ of grades
01 Uusimaa	7 552	4.40	1 271	3.74	8 823	4.30
02 Eastern Uusimaa	479	4.28	40	3.23	519	4.20
03 Southwestern Finland	2 607	4.40	228	3.52	2 835	4.33
04 Satakunta	1 240	4.27	113	3.44	1 353	4.20
05 Kanta-Häme	859	4.23	75	3.32	934	4.16
06 Pirkanmaa	2 669	4.34	260	3.49	2 929	4.26
07 Päijät-Häme	1 091	4.20	107	3.44	1 198	4.13
08 Kymenlaakso	958	4.27	64	3.16	1 022	4.20
09 Southern Karelia	655	4.29	97	3.53	752	4.19
10 Southern Savo	958	4.18	73	3.38	1 031	4.12
11 Northern Savo	1 481	4.21	150	3.57	1 631	4.15
12 Northern Karelia	1 007	4.31	86	3.53	1 093	4.25
13 Central Finland	1 562	4.21	150	3.57	1 712	4.15
14 Southern Ostrobothnia	1 226	4.13	112	3.31	1 338	4.06
15 Ostrobothnia	1 028	4.25	89	3.44	1 117	4.19
16 Central Ostrobothnia	436	4.20	32	3.45	468	4.15
17 Northern Ostrobothnia	2 127	4.25	270	3.64	2 397	4.18
18 Kainuu	543	4.12	72	3.73	615	4.07
19 Lapland	1 045	4.19	174	3.60	1 219	4.11
20 Åland Islands	76	4.12	4	3.88	80	4.11
<b>totals</b>	<b>29 599</b>	<b>4.30</b>	<b>3 467</b>	<b>3.59</b>	<b>33 066</b>	<b>4.22</b>

**FIG. 3.2.4** Means of grade points by regions, 2007. The differences between means among the regions are minimal. The highest points are in Southwestern Finland (03), 4.33, the lowest, Southern Ostrobothnia (14), 4.06.





**TABLE 3.2.8** Examinees receiving grades of laudatur by examination year, 1998–2007.

	1998	1999	2000	2001	2002	2003	2004	2005	2006	2007
<i>9 laudaturs</i>										
spring exam		1								
autumn exam										
subtotals		1								
<i>8 laudaturs</i>										
spring exam			1						5	6
autumn exam										
subtotals			1						5	6
<i>7 laudaturs</i>										
spring exam	10	8	8	7	6	7	10	10	8	16
autumn exam				1		2		1		
subtotals	10	8	8	8	6	9	10	11	8	16
<i>6 laudaturs</i>										
spring exam	50	35	44	44	36	30	40	44	44	65
autumn exam	1	1			2	1	2	1	3	1
subtotals	51	36	44	44	38	31	42	45	47	66
<i>5 laudaturs</i>										
spring exam	118	121	115	110	107	83	103	108	140	126
autumn exam	3	1	1	2		4	2	3	5	6
subtotals	121	122	116	112	107	87	105	111	145	132
<i>4 laudaturs</i>										
spring exam	246	276	274	234	275	230	237	235	242	268
autumn exam	8	3	4	3	12	10	8	7	10	5
subtotals	254	279	278	237	287	240	245	242	252	273
<i>3 laudaturs</i>										
spring exam	559	555	533	578	566	535	578	530	572	491
autumn exam	11	15	16	14	25	22	22	24	24	26
subtotals	570	570	549	592	591	557	600	554	596	517
<i>2 laudaturs</i>										
spring exam	1 280	1 236	1 241	1 381	1 376	1 272	1 290	1 220	1 258	1 183
autumn exam	40	33	45	60	57	59	61	63	67	50
subtotals	1 320	1 269	1 286	1 441	1 433	1 331	1 351	1 283	1 325	1 233
<i>1 laudatur</i>										
spring exam	3 733	3 710	3 818	3 913	3 936	3 880	3 792	3 684	3 667	3 746
autumn exam	134	196	209	231	218	240	235	280	278	224
subtotals	3 867	3 906	4 027	4 144	4 154	4 120	4 027	3 964	3 945	3 970
<b>LAUDATURS, SUBTOTALS</b>										
spring exam	<b>9 914</b>	<b>9 831</b>	<b>9 898</b>	<b>10 208</b>	<b>10 279</b>	<b>9 593</b>	<b>9 879</b>	<b>9 528</b>	<b>9 927</b>	<b>9 837</b>
autumn exam	<b>300</b>	<b>330</b>	<b>368</b>	<b>422</b>	<b>467</b>	<b>504</b>	<b>477</b>	<b>534</b>	<b>567</b>	<b>458</b>
<b>totals</b>	<b>10 214</b>	<b>10 161</b>	<b>10 266</b>	<b>10 630</b>	<b>10 746</b>	<b>10 097</b>	<b>10 356</b>	<b>10 062</b>	<b>10 494</b>	<b>10 295</b>

### 3.3 Placement in higher education

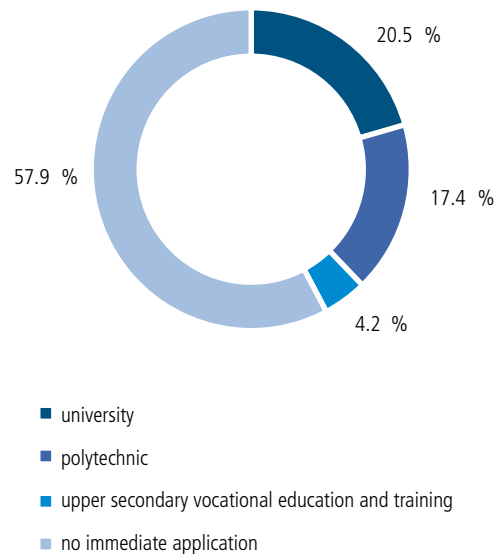
The statistics concerning the placement of the graduates in higher, primarily tertiary, education were obtained from Statistics Finland. These appear with a delay of approximately one year, so the latest year available is 2006. However, the latest chronological series of statistics dealing with the placement of graduates in universities and polytechnics ends with 2005.

Approximately 42% of the 33,091 graduates in 2006 pursued higher studies at universities, polytechnics or in upper secondary vocational education and training during that year (see Fig. 3.3.1). Slightly under half of this group were accepted to universities or colleges, some 40% to polytechnics, and 10% to upper secondary vocational education and training schools. Those most active in pursuing further studies were the graduates from Central Ostrobothnia, where 57.0% continued their studies without delay. On the other hand, the graduates least active in immediately continuing their studies came from the Åland Islands, only 15.2% (see Table 3.3.1).

Out of those who applied for further studies in 2006, 20.9% were graduates from that same year; 15.8% were graduates from 2005, while only 5.6% were graduates from 2002 (see Fig. 3.3.2). However, in 2006 a total of 38.3% of the applicants were graduates from 2001 or earlier. Thus the time that elapsed since graduation does not seem to have a significant impact on placement (see Fig. 3.3.3).

Out of the 2006 graduates, 74.1%, a total of 24,526 persons, applied for further education in the same year (see Table 3.3.2). Those who did not continue constituted 30.8% male and 22.3% female. Out of the applicants, as first choice in the joint application system, 63.2% put in for universities, 34.2% for polytechnics, and 2.6% for upper secondary vocational education and training schools (see Table 3.3.4). A total of 27.6% then actually started university studies, 23.5% went to polytechnics, and 5.7% took up upper secondary vocational education and training. Out of those who applied for further education, 43.5% did not pursue studies without delay. All in all, 43.2% of male and 41.3% of female students took up studies immediately upon graduation.

FIG. 3.3.1 Placement into higher education, 2006 graduates



*Slightly over 42% of the 2006 graduates pursued higher education without delay.*

Research was carried out on when graduates begin studying at universities and polytechnics, taking account of the time elapsing from graduation to entrance. The portion of graduates from each year studying at universities grows for about four years, after which it starts declining. The same four years seems to hold true for the polytechnics as well.

**TABLE 3.3.1** Placement of 2006 graduates into higher education, by educational sector, regional location of institution, youth and adult education.

regional location of institution	university education		polytechnic education		upper secondary vocational educa- tion and training		not continuing immediately		subtotals	
	no.	%	no.	%	no.	%	no.	%	no.	%
<i>01 Uusimaa</i>										
youth education	1 752	21.4	948	11.6	291	3.5	5 213	63.5	8 204	100.0
adult education	25	4.0	39	6.3	35	5.6	522	84.1	621	100.0
subtotals	1 777	20.1	987	11.2	326	3.7	5 735	65.0	8 825	100.0
<i>02 Eastern Uusimaa</i>										
youth education	110	22.4	110	22.4	29	5.9	241	49.2	490	100.0
adult education							2	100.0	2	100.0
subtotals	110	22.4	110	22.4	29	5.9	243	49.4	492	100.0
<i>03 Southwestern Finland</i>										
youth education	549	21.3	469	18.2	102	4.0	1 452	56.5	2 572	100.0
adult education	4	2.8	9	6.3	2	1.4	129	89.6	144	100.0
subtotals	553	20.4	478	17.6	104	3.8	1 581	58.2	2 716	100.0
<i>04 Satakunta</i>										
youth education	256	18.7	349	25.5	43	3.1	721	52.7	1 369	100.0
adult education	1	1.8	6	10.9			48	87.3	55	100.0
subtotals	257	18.1	355	24.9	43	3.0	769	54.0	1 424	100.0
<i>05 Kanta-Häme</i>										
youth education	158	19.3	147	18.0	40	4.9	472	57.8	817	100.0
adult education	18	18.2	11	11.1	2	2.0	68	68.7	99	100.0
subtotals	176	19.2	158	17.2	42	4.6	540	59.0	916	100.0
<i>06 Pirkanmaa</i>										
youth education	559	23.6	347	14.6	105	4.4	1 360	57.4	2 371	100.0
adult education	56	12.7	58	13.2	18	4.1	308	70.0	440	100.0
subtotals	615	21.9	405	14.4	123	4.4	1 668	59.3	2 811	100.0
<i>07 Päijät-Häme</i>										
youth education	194	17.6	189	17.1	57	5.2	665	60.2	1 105	100.0
adult education	3	3.4	13	14.6	6	6.7	67	75.3	89	100.0
subtotals	197	16.5	202	16.9	63	5.3	732	61.3	1 194	100.0
<i>08 Kymenlaakso</i>										
youth education	195	19.9	208	21.2	35	3.6	542	55.3	980	100.0
adult education	2	3.8	3	5.7	5	9.4	43	81.1	53	100.0
subtotals	197	19.1	211	20.4	40	3.9	585	56.6	1 033	100.0
<i>09 Southern Karelia</i>										
youth education	149	20.2	154	20.9	38	5.2	396	53.7	737	100.0
adult education			6	14.6	1	2.4	34	82.9	41	100.0
subtotals	149	19.2	160	20.6	39	5.0	430	55.3	778	100.0
<i>10 Southern Savo</i>										
youth education	202	20.8	223	22.9	35	3.6	512	52.7	972	100.0
adult education	2		6	11.1	3	5.6	43	79.6	54	96.3
subtotals	204	19.9	229	22.3	38	3.7	555	54.1	1 026	100.0
<i>11 Northern Savo</i>										
youth education	339	21.9	314	20.3	76	4.9	821	53.0	1 550	100.0
adult education	2	2.6	7	9.1	9	11.7	59	76.6	77	100.0
subtotals	341	21.0	321	19.7	85	5.2	880	54.1	1 627	100.0

regional location of institution	university education		polytechnic education		upper secondary vocational educa- tion and training		not continuing immediately		subtotals	
	no.	%	no.	%	no.	%	no.	%	no.	%
<i>12 Northern Karelia</i>										
youth education	239	22.2	253	23.5	51	4.7	535	49.6	1 078	100.0
adult education	14	24.6	12	21.1	4	7.0	27	47.4	57	100.0
subtotals	253	22.3	265	23.3	55	4.8	562	49.5	1 135	100.0
<i>13 Central Finland</i>										
youth education	296	19.3	325	21.2	74	4.8	835	54.6	1 530	100.0
adult education	30	29.1	10	9.7	4	3.9	59	57.3	103	100.0
subtotals	326	20.0	335	20.5	78	4.8	894	54.7	1 633	100.0
<i>14 Southern Ostrobothnia</i>										
youth education	229	18.9	281	23.2	54	4.5	647	53.4	1 211	100.0
adult education	1	3.8					25	96.2	26	100.0
subtotals	230	18.6	281	22.7	54	4.4	672	54.3	1 237	100.0
<i>15 Ostrobothnia</i>										
youth education	330	29.2	228	20.2	44	3.9	529	46.8	1 131	100.0
adult education	9	20.0	11	24.4	1	2.2	24	53.3	45	100.0
subtotals	339	28.8	239	20.3	45	3.8	553	47.0	1 176	100.0
<i>16 Central Ostrobothnia</i>										
youth education	111	21.6	148	28.8	42	8.2	213	41.4	514	100.0
adult education	1	6.3					15	93.8	16	100.0
subtotals	112	21.1	148	27.9	42	7.9	228	43.0	530	100.0
<i>17 Northern Ostrobothnia</i>										
youth education	562	22.8	498	20.2	96	3.9	1 308	53.1	2 464	100.0
adult education	3	2.7	10	9.1	9	8.2	88	80.0	110	100.0
subtotals	565	22.0	508	19.7	105	4.1	1 396	54.2	2 574	100.0
<i>18 Kainuu</i>										
youth education	105	19.6	123	22.9	20	3.7	288	53.7	536	100.0
adult education							9	100.0	9	100.0
subtotals	105	19.3	123	22.6	20	3.7	297	54.5	545	100.0
<i>19 Lapland</i>										
youth education	252	20.5	236	19.2	57	4.6	686	55.7	1 231	100.0
adult education	1	2.9	2	5.9	3	8.8	28	82.4	34	100.0
subtotals	253	20.0	238	18.8	60	4.7	714	56.4	1 265	100.0
<i>20 Åland Islands</i>										
youth education	10	12.7			2	2.5	67	84.8	79	100.0
adult education										
subtotals	10	12.7	0	0.0	2	2.5	67	84.8	79	100.0
<b>ENTIRE COUNTRY</b>										
youth education	<b>6 597</b>	<b>21.3</b>	<b>5 550</b>	<b>17.9</b>	<b>1 291</b>	<b>4.2</b>	<b>17 503</b>	<b>56.6</b>	<b>30 941</b>	<b>100.0</b>
adult education	<b>172</b>	<b>8.3</b>	<b>203</b>	<b>9.8</b>	<b>102</b>	<b>4.9</b>	<b>1 598</b>	<b>77.0</b>	<b>2 075</b>	<b>100.0</b>
<b>totals</b>	<b>6 769</b>	<b>20.5</b>	<b>5 753</b>	<b>17.4</b>	<b>1 393</b>	<b>4.2</b>	<b>19 101</b>	<b>57.9</b>	<b>33 016</b>	<b>100.0</b>

source: Statistics Finland, school statistics

**TABLE 3.3.2** Application to and placement in higher education immediately after graduation, by educational sector and by gender, 2006.\*

	male no.	change over % 2005	change over % 2005	female no.	change over % 2005	change over % 2005	subtotals no.	change over % 2005	change over % 2005
<i>applicants*</i>									
university	6 237	44.4	-0.1	9 257	48.6	-0.7	15 494	46.8	-0.4
polytechnic	3 308	23.6	-2.1	5 089	26.7	-1.4	8 397	25.4	-1.7
upper secondary vocational education and training	163	1.2	0.1	472	2.5	0.1	635	1.9	0.0
no immediate application	4 324	30.8	2.1	4 241	22.3	2.1	8 565	25.9	2.1
subtotals	14 032	100.0		19 059	100.0		33 091	100.0	
<i>enrolments*</i>									
university	3 353	23.9	0.8	3 421	17.9	1.0	6 774	20.5	1.0
polytechnic	2 478	17.7	-0.6	3 288	17.3	-0.9	5 766	17.4	-0.8
upper secondary vocational education and training	230	1.6	0.0	1 168	6.1	-0.3	1 398	4.2	-0.1
no immediate application	7 971	56.8	-0.2	11 182	58.7	0.2	19 153	57.9	0.0
subtotals	14 032	100.0		19 059	100.0		33 091	100.0	

\*Graduates who apply to and/or are then enrolled in institutes of higher learning are entered into this table once only, on the basis of the highest educational institution.

source:

Statistics Finland, school statistics

**TABLE 3.3.3** Graduates studying in universities and polytechnics, 1994–2005, in terms of time elapsed after the Matriculation Examination.

year of Matriculation Examination	time elapsing after completion of Matriculation Examination											
	0 yr	1 yr	2 yrs	3 yrs	4 yrs	5 yrs	6 yrs	7 yrs	8 yrs	9 yrs	10 yrs	11 yrs
<i>in universities (%)</i>												
1994	15.6	26.2	31.9	34.4	35.3	35.2	32.5	28.2	24.0	21.0	19.0	16.7
1995	16.2	25.6	30.9	33.2	34.3	34.1	31.6	27.5	23.9	21.3	18.9	
1996	16.0	25.2	30.2	32.5	33.8	34.0	31.3	27.6	24.3	21.6		
1997	16.8	25.6	30.9	33.1	34.5	34.2	31.9	28.4	24.6			
1998	18.3	26.9	31.8	33.7	34.8	34.9	32.5	28.4				
1999	18.7	27.6	32.7	34.7	35.6	35.5	32.7					
2000	19.0	27.9	33.0	34.9	35.6	34.8						
2001	19.6	28.4	33.7	35.6	36.0							
2002	19.5	28.4	32.9	34.3								
2003	19.0	27.3	31.8									
2004	19.3	27.0										
2005	19.6											
<i>in polytechnics (%)</i>												
1994		1.9	13.5	18.3	19.6	18.2	14.5	10.6	7.9	6.1	5.0	4.1
1995	0.9	11.2	20.6	24.9	26.3	21.7	15.6	11.2	8.2	6.2	5.0	
1996	9.9	19.7	28.4	33.9	30.4	22.9	16.0	11.3	8.3	6.3		
1997	12.0	22.8	32.9	36.0	31.0	23.5	16.2	11.3	8.4			
1998	13.2	26.3	34.7	37.2	32.9	24.7	17.2	11.7				
1999	13.5	27.0	34.8	37.5	32.4	24.4	17.0					
2000	12.3	26.1	35.3	37.4	33.0	25.3						
2001	11.8	28.4	35.2	36.9	33.1							
2002	16.2	28.4	35.1	37.8								
2003	15.4	29.1	36.2									
2004	17.2	30.7										
2005	18.4											

\*The polytechnics were established in 1991 (in line with the Bologna Process), which helps to explain why the percentages were relatively low in the earlier years.

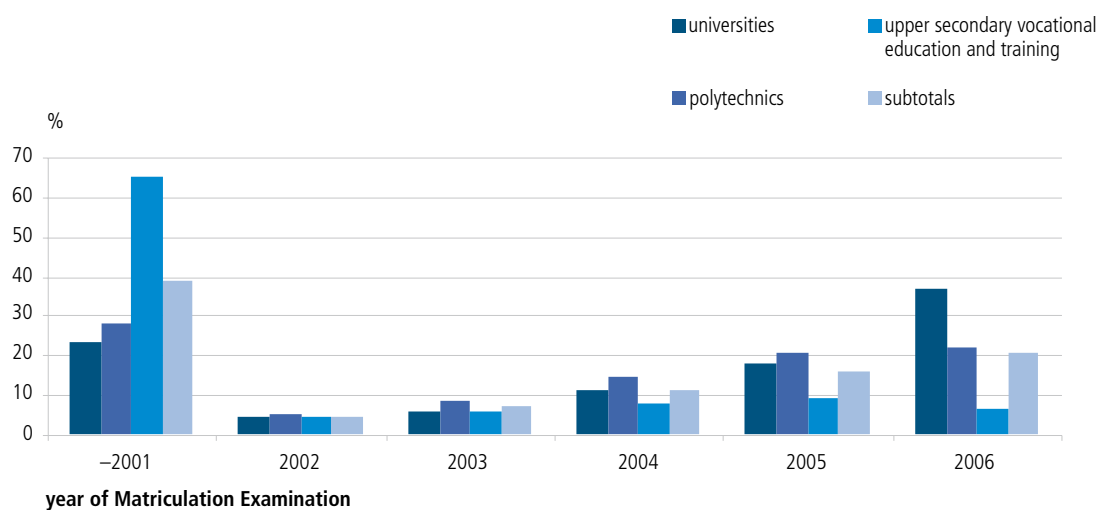
source:

Statistics Finland, school statistics

**TABLE 3.3.4** Graduates applying for and enrolling in higher education in 2006, by year of completion of Matriculation Examination.

year of Matriculation Examination	applicants for higher education, subtotals		placements in higher education						subtotals	
			universities		polytechnics		upper secondary vocational education and training			
	no.	%	no.	%	no.	%	no.	%	no.	%
2001	44 908	38.3	4 242	23.3	7 274	28.0	14 240	65.0	25 756	39.0
2002	6 606	5.6	827	4.5	1 403	5.4	1 054	4.8	3 284	5.0
2003	9 024	7.7	1 122	6.2	2 302	8.9	1 298	5.9	4 722	7.1
2004	13 559	11.6	2 055	11.3	3 885	15.0	1 775	8.1	7 715	11.7
2005	18 516	15.8	3 255	17.8	5 370	20.7	2 069	9.5	10 694	16.2
2006	24 491	20.9	6 738	36.9	5 724	22.1	1 458	6.7	13 920	21.1
<b>TOTALS</b>	<b>117 104</b>	<b>100</b>	<b>18 239</b>	<b>100</b>	<b>25 958</b>	<b>100</b>	<b>21 894</b>	<b>100</b>	<b>66 091</b>	<b>100</b>

source: Statistics Finland, school statistics

**FIG. 3.3.2** Placement of graduates into higher education in 2006, by year of completion of Matriculation Examination.

*Out of the 2006 applicants 20.9% had graduated in the same year, whereas 15.8% were 2005 graduates and only 5.6% from 2002. However, graduates from 2001 and earlier constituted 38.3% of the applicants, which means that the time that has elapsed from graduation seems to have little impact on placement.*

## 4. Membership of the Matriculation Examination Board

The Matriculation Examination Board is the organ responsible for leadership and organisation as well as the exercise of executive authority over the Matriculation Examination. The Board also develops the Examination in cooperation with the National Board of Education. The Ministry of Education appoints the chair of the Board and the required number of members, on the basis of presentations by universities and polytechnics and by the National Board of Education. Members of the Board are to be thoroughly grounded in the subjects of the Examination and well-versed in the education profession. The Board is appointed for a term of three years; the examination year 2007 was the first of the current Board. The practical realisation of the Examination is handled by the secretariat of the Board, which also has charge over the administrative duties of the Board. At the end of 2007 the secretariat employed 22 persons. In 2007 the Board comprised 38 members, with some 360 associate members, who mostly work as readers of the tests. Out of the 38 members proper, 31 lived in the region of Uusimaa. Other regions, Pirkanmaa, Central Finland, Southwestern Finland, Kanta-Häme, Northern Karelia, Northern Savo, and Lapland, each had one member. Of the associate members, a slightly larger proportion, ie. 27.7%, lived outside Uusimaa (see Table 4.1).

Some 60% of the members held doctoral degrees. Some 7.9% were licentiates (degree between the MA/MS and PhD) and the rest, a good one-third, had master's degrees. Of the associate members, 38% were PhDs, with 6.9% licentiates. The largest group, approximately one-half, of the associate members had master's degrees. Some 40% of the members held professorships or associate professorships, the corresponding figure being slightly under one-quarter among the associate members. The gender distribution was quite even, with 18 male and 20 female members. Among associate members there were clearly more women, ie. slightly under 60%.

Annually, the Board renders some 5,000–8,000 decisions on the basis of appeals. The year in focus witnessed a record high figure of 7,323. The majority of requests concern compensatory points or special test arrangements, these on the basis of the health of the candidates. The number of decisions awarded on the basis of the learning disabilities of candidates has grown tremendously in recent years.

At the end of 2007 the average age of the Board members was 54.8, the youngest being 38 and the oldest 66. The average age of the associate members was also 54.8, although their ages varied from 28 to 70. Associate members are to give up their posts at the latest during the year they turn 70. Of the members, 56.6% were 55 and over.

**TABLE 4.1** Matriculation Examination Board members and associate members, by region of residence, 2007.

region	members		associate members		subtotals	
	no.	%	no.	%	no.	%
01 Uusimaa	31	81.6	263	72.3	294	73.1
02 Eastern Uusimaa			7	1.9	7	1.7
03 Southwestern Finland	1	2.6	21	5.8	22	5.5
04 Satakunta						
05 Kanta-Häme	1	2.6	4	1.1	5	1.2
06 Pirkanmaa	1	2.6	16	4.4	17	4.2
07 Päijät-Häme			2	0.5	2	0.5
08 Kymenlaakso			1	0.3	1	0.2
09 Southern Karelia						
10 Southern Savo						
11 Northern Savo	1	2.6	4	1.1	5	1.2
12 Northern Karelia	1	2.6	3	0.8	4	1.0
13 Central Finland	1	2.6	24	6.6	25	6.2
14 Southern Ostrobothnia						
15 Ostrobothnia			5	1.4	5	1.2
16 Central Ostrobothnia			1	0.3	1	0.2
17 Northern Ostrobothnia			6	1.6	6	1.5
18 Kainuu			1	0.3	1	0.2
19 Lapland	1	2.6	4	1.1	5	1.2
20 Åland Islands						
foreign			2	0.5	2	0.5
<b>TOTALS</b>	<b>38</b>	<b>100.0</b>	<b>364</b>	<b>100.0</b>	<b>402</b>	<b>100.0</b>

**TABLE 4.2** Decisions rendered by the Matriculation Examination Board, 1998–2007.

matter under deliberation	1998	1999	2000	2001	2002	2003	2004	2005	2006	2007
special arrangements*	98	110	165	238	452	488	506	646	798	926
hearing disability	70	83	52	50	52	50	60	52	49	51
medical certificate	1 406	1 383	1 221	1 525	1 366	1 474	1 318	1 650	1 669	1 747
dyslexia / dysgraphia**	1 052	1 143	1 040	1 234	1 359	1 202	1 782	2 145	1 425	2 744
mother tongue not Finnish or Swedish	216	183	222	213	279	456	553	620	561	888
replacement of second national language test***	283	276	276	268	164					
individual cases	846	691	666	630	562	612	572	599	612	528
right to participate in exam			14	17	6	7	23	15	17	17
request to carry out research	30	31	9	17	9	19	12	9	25	26
request to publish	8	10	4	8	14	17	20	24	17	36
request to recheck a test	288	310	283	248	243	250	231	222	297	360
<b>TOTALS</b>	<b>4 297</b>	<b>4 220</b>	<b>3 952</b>	<b>4 448</b>	<b>4 506</b>	<b>4 575</b>	<b>5 077</b>	<b>5 982</b>	<b>5 470</b>	<b>7 323</b>

\*Includes multifold special test arrangements for candidates with learning disabilities. These have been possible to organise since the autumn 2006 exam.

\*\*The figure was very high in 2005 due to exceptional arrangements.

\*\*\*After 1 Sept. 2002, decisions on replacing the test in the second national language were made by principals. During 2005-07, this replacement was possible under certain special circumstances. After 2007, this replacement is no longer possible.



**TABLE 4.3** Matriculation Examination Board members and associate members, by university position or degree, then by gender.

	member		associate members		subtotals	
	no.	%	no.	%	no.	%
<i>professors</i>						
male	10	55.6	28	19.1	38	23.0
female	3	15.0	16	7.4	19	8.0
subtotals	13	34.2	44	12.1	57	14.2
<i>docents (assoc. prof.)</i>						
male	1	5.6	24	16.3	25	15.2
female	1	5.0	13	6.0	14	5.9
subtotals	2	5.3	37	10.2	39	9.7
<i>PhD</i>						
male	2	11.1	27	18.4	29	17.6
female	5	25.0	32	14.7	37	15.6
subtotals	7	18.4	59	16.2	66	16.4
<i>licentiate</i>						
male	1	5.6	9	6.1	10	6.1
female	2	10.0	16	7.4	18	7.6
subtotals	3	7.9	25	6.9	28	7.0
<i>higher university degree</i>						
male	4	22.2	53	36.1	57	34.5
female	9	45.0	133	61.3	142	59.9
subtotals	13	34.2	186	51.1	199	49.5
<i>other degree / missing info</i>						
male			6	4.1	6	3.6
female			7	3.2	7	3.0
subtotals			13	3.6	13	3.2
<b>SUBTOTALS</b>						
male	<b>18</b>	<b>47.4</b>	<b>147</b>	<b>40.4</b>	<b>165</b>	<b>41.0</b>
female	<b>20</b>	<b>52.6</b>	<b>217</b>	<b>59.6</b>	<b>237</b>	<b>59.0</b>
<b>totals</b>	<b>38</b>	<b>100.0</b>	<b>364</b>	<b>100.0</b>	<b>402</b>	<b>100.0</b>

**TABLE 4.4** Matriculation Examination Board members and associate members by age cohort.

age cohort	members		associate members		subtotals	
	no.	percent in age cohort %	no.	percent in age cohort %	no.	percent in age cohort %
≤29			2	0.5	2	0.5
30–34			9	2.5	9	2.2
35–39	2	5.3	27	7.4	29	7.2
40–44	3	7.9	37	10.2	40	10.0
45–49	4	10.5	52	14.3	56	13.9
50–54	5	13.2	31	8.5	36	9.0
55–59	11	28.9	56	15.4	67	16.7
60–64	10	26.3	68	18.7	78	19.4
65–70	3	7.9	82	22.5	85	21.1
<b>TOTALS</b>	<b>38</b>	<b>100.0</b>	<b>364</b>	<b>100.0</b>	<b>402</b>	<b>100.0</b>

# APPENDICES

---

1. The national distribution of grades on subject tests, youth and adult education, spring 2007.
2. The national distribution of grades on subject tests, youth and adult education, autumn 2007.
3. Matriculation Examination candidates by region, youth or adult education, and mother tongue, spring 2007.
4. Matriculation Examination candidates by region, youth or adult education, and mother tongue, autumn 2007.

1. The national distribution of grades on subject tests, youth and adult education, spring 2007.

test	youth education						adult education						subtotals			
	L	E	M	C	B	A	I	subtotals	L	E	M	C		B	A	I
<i>mother tongue, Finnish</i>																
no.	1 051	2 705	5 565	6 831	3 302	1 429	443	21 326	89	164	284	466	209	76	13	1 301
%	4.9	12.7	26.1	32.0	15.5	6.7	2.1	100.0	6.8	12.6	21.8	35.8	16.1	5.8	1.0	100.0
male %	3.3	8.6	21.1	33.7	20.2	9.9	3.2	100.0	8.9	19.0	25.7	31.2	11.7	2.3	1.2	100.0
female %	6.1	15.6	29.7	30.8	12.1	4.4	1.3	100.0	0.8	8.7	19.5	39.4	18.8	7.6	5.2	100.0
<i>mother tongue, Swedish</i>																
no.	89	227	464	595	288	131	38	1 832	2	2	5	11	13	14	4	49
%	4.9	12.4	25.3	32.5	15.7	7.2	2.1	100.0	4.1	4.1	10.2	22.4	26.5	28.6	8.2	100.0
male %	3.1	7.9	21.7	31.7	22.1	10.1	3.5	100.0	4.0	4.0	12.0	24.0	24.0	28.0	8.0	100.0
female %	6.2	15.7	28.0	33.0	11.1	5.0	1.0	100.0	4.2	4.2	8.3	20.8	29.2	29.2	8.3	100.0
<i>mother tongue, Northern Sami</i>																
no.			3	1	2		1	7								
%			42.9	14.3	28.6		14.3	100.0								
male %			50.0		50.0			100.0								
female %			40.0	20.0	20.0		20.0	100.0								
<i>Swedish, A-level</i>																
no.	89	378	446	322	336	172	63	1 806	8	30	26	19	26	33	50	192
%	4.9	20.9	24.7	17.8	18.6	9.5	3.5	100.0	4.2	15.6	13.5	9.9	13.5	17.2	26.0	100.0
male %	2.5	15.8	22.4	21.7	22.6	12.4	2.6	100.0	12.9	29.0	12.9	12.9	9.7	9.7	12.9	100.0
female %	6.0	23.1	25.7	16.2	16.9	8.3	3.8	100.0	2.5	13.0	13.7	9.3	14.3	18.6	28.6	100.0
<i>Swedish, B-level</i>																
no.	586	1 572	2 153	2 992	2 749	1 774	613	12 439	14	48	123	177	237	268	178	1 045
%	4.7	12.6	17.3	24.1	22.1	14.3	4.9	100.0	1.3	4.6	11.8	16.9	22.7	25.6	17.0	100.0
male %	2.6	7.9	13.5	24.3	26.8	18.0	7.0	100.0	0.8	2.5	8.4	13.5	22.5	28.9	23.3	100.0
female %	5.8	15.1	19.3	23.9	19.6	12.3	3.9	100.0	1.6	5.7	13.5	18.7	22.8	24.0	13.8	100.0
<i>Finnish, A-level</i>																
no.	61	232	283	239	138	103	7	1 063	8	5	13	9	11	8	1	47
%	5.7	21.8	26.6	22.5	13.0	9.7	0.7	100.0	10.6	10.6	27.7	19.1	23.4	17.0	2.1	100.0
male %	4.4	20.3	28.4	24.9	11.6	9.3	1.0	100.0	15.8	15.8	10.5	36.8	10.5	21.1	5.3	100.0
female %	6.9	23.1	25.1	20.5	14.1	10.0	0.3	100.0	7.1	7.1	39.3	7.1	32.1	14.3	100.0	
<i>Finnish, B-level</i>																
no.	3	15	24	45	57	43	14	201	1	1	1	5	4	9	6	26
%	1.5	7.5	11.9	22.4	28.4	21.4	7.0	100.0	3.8	3.8	3.8	19.2	15.4	34.6	23.1	100.0
male %	2.9	4.4	4.4	17.7	30.9	29.4	10.3	100.0	5.6	5.6	12.5	27.8	12.5	25.0	50.0	100.0
female %	0.8	9.0	15.8	24.8	27.1	17.3	5.3	100.0								
<i>English, A-level</i>																
no.	1 201	4 094	5 160	5 567	4 750	2 191	626	23 589	79	236	314	417	443	292	143	1 924
%	5.1	17.4	21.9	23.6	20.1	9.3	2.7	100.0	4.1	12.3	16.3	21.7	23.0	15.2	7.4	100.0
male %	5.8	19.2	23.5	23.7	18.1	7.6	2.2	100.0	5.9	16.1	17.2	21.6	22.0	13.3	4.0	100.0
female %	4.6	16.0	20.7	23.6	21.7	10.6	3.0	100.0	2.8	9.6	15.7	21.7	23.8	16.5	9.9	100.0
<i>French, A-level</i>																
no.	26	93	89	74	68	31	2	383	1	2	5	4	1	2	1	15
%	6.8	24.3	23.2	19.3	17.8	8.1	0.5	100.0	6.7	13.3	33.3	26.7	6.7	13.3	2	100.0
male %	2.3	24.4	19.8	22.1	19.8	11.6		100.0								
female %	8.1	24.2	24.2	18.5	17.2	7.1	0.7	100.0	7.7	15.4	38.5	23.1	50.0	15.4	100.0	
<i>Spanish, A-level</i>																
no.	1	8	7	2	1	1	1	20	1	1	1	1	3	1	1	8
%	5.0	40.0	35.0	10.0	5.0	5.0		100.0	12.5	12.5	12.5	12.5	37.5	12.5	100.0	
male %		33.3	33.3	33.3				100.0								
female %	5.9	41.2	35.3	5.9	5.9	5.9		100.0	16.7	16.7	16.7	16.7	33.3	16.7	100.0	

test	youth education						adult education						subtotals	I	subtotals		
	L	E	M	C	B	A	L	E	M	C	B	A				I	
<i>German, A-level</i>																	
no.	63	202	234	255	201	121	29	1105	3	6	7	4	1	4	2	5	21
%	5.7	18.3	21.2	23.1	18.2	11.0	2.6	100.0	14.3	28.6	28.0	19.1	4.8	19.1	9.5	23.8	100.0
male %	6.1	18.3	22.6	20.7	18.9	11.9	1.5	100.0	40.0	40.0	44.4	25.0	20.0	25.0	12.5	31.3	100.0
female %	5.5	18.3	20.6	24.1	17.9	10.6	3.1	100.0	6.3	25.0	18.8	6.3	3.1	6.3	12.5	31.3	100.0
<i>Russian, A-level</i>																	
no.	38	59	30	15	16	14	4	176	2	9	7	1	3	1	2	1	25
%	21.6	33.5	17.1	8.5	9.1	8.0	2.3	100.0	8.0	36.0	28.0	4.0	12.0	4.0	8.0	4.0	100.0
male %	12.3	40.0	13.9	10.8	12.3	9.2	1.5	100.0	55.6	55.6	44.4	6.3	18.8	6.3	12.5	6.3	100.0
female %	27.0	29.7	18.9	7.2	7.2	7.2	2.7	100.0	25.0	25.0	18.8	6.3	18.8	6.3	12.5	6.3	100.0
<i>Inari Sami, C-level</i>																	
no.					1			1									
%					100.0			100.0									
male %					100.0			100.0									
female %																	
<i>Northern Sami, C-level</i>																	
no.			1	3			1	5									
%			20.0	60.0			20.0	100.0									
male %			20.0	60.0			20.0	100.0									
female %																	
<i>English, C-level</i>																	
no.	21	59	124	131	91	48	14	488	18	18	4	4	11	24	17	9	101
%	4.3	12.1	25.4	26.8	18.6	9.8	2.9	100.0	17.8	17.8	4.0	4.0	10.9	23.8	16.8	8.9	100.0
male %	4.8	14.7	26.0	27.3	16.9	7.8	2.6	100.0	19.1	19.1	4.8	4.8	16.7	26.2	9.5	4.8	100.0
female %	3.9	9.7	24.9	26.5	20.2	11.7	3.1	100.0	17.0	17.0	3.4	3.4	6.8	22.0	22.0	11.9	100.0
<i>French, C-level</i>																	
no.	108	416	473	458	259	156	46	1916	9	12	1	1	9	5	2	1	39
%	5.6	21.7	24.7	23.9	13.5	8.1	2.4	100.0	23.1	30.8	2.6	2.6	23.1	12.8	5.1	2.6	100.0
male %	3.9	18.1	20.8	28.9	15.0	10.8	2.7	100.0	10.0	50.0	3.5	3.5	30.0	10.0	10.0	3.5	100.0
female %	5.9	22.3	25.3	23.1	13.3	7.7	2.4	100.0	27.6	24.1	3.5	3.5	20.7	17.2	3.5	3.5	100.0
<i>Portuguese, C-level</i>																	
no.	2	2	5	2	2			13						1			1
%	15.4	15.4	38.5	15.4	15.4			100.0						100.0			100.0
male %	25.0	25.0	25.0	25.0	25.0			100.0						100.0			100.0
female %	11.1	11.1	55.6	11.1	11.1			100.0									
<i>Latin, C-level</i>																	
no.	5	14	14	15	11	12	10	81	2	1	1						4
%	6.2	17.3	17.3	18.5	13.6	14.8	12.3	100.0	50.0	25.0	25.0						25.0
male %		25.0	8.3	25.0	12.5	20.8	8.3	100.0	100.0								100.0
female %	8.8	14.0	21.1	15.8	14.0	12.3	14.0	100.0	33.3	33.3	33.3						33.3
<i>Latin, broader syllabus</i>																	
no.	3	1	1	1	2			7									
%	42.9	14.3	14.3	14.3	28.6			100.0									
male %	50.0	25.0	25.0	25.0	66.7			100.0									
female %	33.3							100.0									
<i>Spanish, C-level</i>																	
no.	45	108	167	217	156	84	37	814	30	26	9	8	12	8	4	1	90
%	5.5	13.3	20.5	26.7	19.2	10.3	4.5	100.0	33.3	28.9	10.0	8.9	13.3	8.9	4.4	1.1	100.0
male %	4.5	11.2	10.5	31.3	20.9	16.4	5.2	100.0	31.3	25.0	18.8	12.5	12.5	12.5	5.4	1.4	100.0
female %	5.7	13.7	22.5	25.7	18.8	9.1	4.4	100.0	33.8	29.7	8.1	8.1	13.5	8.1	5.4	1.4	100.0

test	youth education						adult education						subtotals				
	L	E	M	C	B	A	I	subtotals	L	E	M	C		B	A	I	subtotals
<i>German, C-level</i>																	
no.	186	724	874	709	514	290	71	3 368	4	8	14	10	10	6	2	54	
%	5.5	21.5	26.0	21.1	15.3	8.6	2.1	100.0	7.4	14.8	25.9	18.5	18.5	11.1	3.7	100.0	
male %	4.1	16.3	23.6	22.8	18.5	11.4	3.3	100.0	12.5	25.0	12.5	50.0	50.0	13.0	4.4	100.0	
female %	6.2	23.8	27.0	20.3	13.8	7.4	1.6	100.0	6.5	13.0	28.3	13.0	21.7	13.0	4.4	100.0	
<i>Italian, C-level</i>																	
no.	11	36	32	40	30	16	12	177	1	5	10	9	3			28	
%	6.2	20.3	18.1	22.6	16.9	9.0	6.8	100.0	3.6	17.9	35.7	32.1	10.7			100.0	
male %	10.0	25.0	15.0	10.0	15.0	10.0	15.0	100.0		33.3		50.0	16.7			100.0	
female %	5.7	19.8	18.5	24.2	17.2	8.9	5.7	100.0	4.6	13.6	45.5	27.3	9.1			100.0	
<i>Russian, C-level</i>																	
no.	41	62	87	79	58	58	9	394	3	15	7	8	8	4		45	
%	10.4	15.7	22.1	20.1	14.7	14.7	2.3	100.0	6.7	33.3	15.6	17.8	17.8	8.9		100.0	
male %	5.8	12.8	14.0	20.9	19.8	22.1	4.7	100.0	18.8	31.3	12.5	12.5	12.5	12.5		100.0	
female %	11.7	16.6	24.4	19.8	13.3	12.7	1.6	100.0		34.5	17.2	20.7	20.7	6.9		100.0	
<i>mathematics, A-level</i>																	
no.	631	1 813	2 284	2 725	1 989	1 130	875	11 447	6	17	34	59	47	36	70	269	
%	5.5	15.8	20.0	23.8	17.4	9.9	7.6	100.0	2.2	6.3	12.6	21.9	17.5	13.4	26.0	100.0	
male %	6.5	16.1	19.5	22.9	17.9	9.6	7.6	100.0	3.5	5.9	14.1	20.0	14.7	13.5	28.2	100.0	
female %	4.3	15.5	20.5	24.9	16.7	10.2	7.7	100.0		7.1	10.1	25.3	22.2	13.1	22.2	100.0	
<i>mathematics, C-level</i>																	
no.	706	1 762	2 493	2 827	2 170	1 159	949	12 066	54	120	198	256	270	206	203	1 307	
%	5.9	14.6	20.7	23.4	18.0	9.6	7.9	100.0	4.1	9.2	15.1	19.6	20.7	15.8	15.5	100.0	
male %	4.1	12.6	19.9	24.3	19.3	10.6	9.2	100.0	3.5	9.6	16.2	17.5	21.8	16.2	15.1	100.0	
female %	7.2	16.1	21.2	22.8	17.0	8.9	6.9	100.0	4.7	8.8	14.2	21.5	19.6	15.4	15.9	100.0	
<i>biology</i>																	
no.	207	606	832	1 019	907	449	149	4 169	3	17	24	51	58	47	24	224	
%	5.0	14.5	20.0	24.4	21.8	10.8	3.6	100.0	1.3	7.6	10.7	22.8	25.9	21.0	10.7	100.0	
male %	2.1	8.5	15.3	25.3	26.9	16.3	5.7	100.0		7.3	5.5	12.7	29.1	32.7	12.7	100.0	
female %	6.2	17.2	22.0	24.1	19.5	8.3	2.6	100.0	1.8	7.7	12.4	26.0	24.9	17.2	10.1	100.0	
<i>general/ethics</i>																	
no.	18	41	38	44	26	13	5	185	3	2	3	10	7	4	2	28	
%	9.7	22.2	20.5	23.8	14.1	7.0	2.7	100.0		7.1	10.7	35.7	25.0	14.3	7.1	100.0	
male %	1.6	16.1	21.0	25.8	19.4	11.3	4.8	100.0		15.4	15.4	23.1	23.1	7.7	15.4	100.0	
female %	13.8	25.2	20.3	22.8	11.4	4.9	1.6	100.0			6.7	46.7	26.7	20.0		100.0	
<i>philosophy</i>																	
no.	43	158	182	201	172	90	45	891	1	6	14	10	15	11	6	63	
%	4.8	17.7	20.4	22.6	19.3	10.1	5.1	100.0	1.6	9.5	22.2	15.9	23.8	17.5	9.5	100.0	
male %	3.1	14.5	17.1	24.1	21.5	12.8	7.0	100.0	3.0	9.1	24.2	9.1	24.2	21.2	9.1	100.0	
female %	6.3	20.6	23.3	21.2	17.4	7.8	3.4	100.0		10.0	20.0	23.3	23.3	13.3	10.0	100.0	
<i>physics</i>																	
no.	256	696	950	1 321	918	457	174	4 772	4	14	16	41	27	33	38	173	
%	5.4	14.6	19.9	27.7	19.2	9.6	3.6	100.0	2.3	8.1	9.2	23.7	15.6	19.1	22.0	100.0	
male %	5.5	14.5	19.2	27.6	19.7	9.7	3.8	100.0	2.7	7.5	8.8	23.1	15.0	19.7	23.1	100.0	
female %	4.9	15.0	22.5	28.1	17.4	9.0	3.2	100.0		11.5	11.5	26.9	19.2	15.4	15.4	100.0	
<i>geography</i>																	
no.	238	766	871	1 158	812	449	192	4 486	10	34	30	61	56	43	13	247	
%	5.3	17.1	19.4	25.8	18.1	10.0	4.3	100.0	4.1	13.8	12.1	24.7	22.7	17.4	5.3	100.0	
male %	2.4	12.7	16.9	27.2	22.4	12.9	5.6	100.0	1.7	6.9	12.9	27.6	28.5	19.0	3.5	100.0	
female %	8.5	21.8	22.1	24.4	13.5	6.9	2.8	100.0	6.1	19.9	11.5	22.1	17.6	16.0	6.9	100.0	

test	youth education					adult education					subtotals	I	subtotals				
	L	E	M	C	B	A	I	subtotals	L	E				M	C	B	A
<i>history</i>																	
no.	284	822	1 108	1 389	873	586	246	5 308	8	21	48	72	75	73	49	346	
%	5.4	15.5	20.9	26.2	16.4	11.0	4.6	100.0	2.3	6.1	13.9	20.8	21.7	21.1	14.2	100.0	
male %	3.1	12.2	18.7	27.0	19.3	13.9	5.8	100.0	2.3	5.9	13.2	17.8	20.1	23.7	16.9	100.0	
female %	8.5	20.3	24.0	25.0	12.3	6.9	3.0	100.0	2.4	6.3	15.0	26.0	24.4	16.5	9.5	100.0	
<i>chemistry</i>																	
no.	227	563	784	885	792	477	190	3 918	3	20	16	18	18	24	12	111	
%	5.8	14.4	20.0	22.6	20.2	12.2	4.8	100.0	2.7	18.0	14.4	16.2	16.2	21.6	10.8	100.0	
male %	5.9	13.6	19.0	22.4	19.5	13.9	5.8	100.0	2.6	18.4	15.8	16.2	15.8	23.7	15.8	100.0	
female %	5.6	15.4	21.5	22.9	21.2	9.8	3.6	100.0	2.7	17.8	13.7	20.6	16.4	20.6	8.2	100.0	
<i>psychology</i>																	
no.	317	933	1 490	1 473	1 176	578	221	6 188	2	36	66	87	100	65	35	391	
%	5.1	15.1	24.1	23.8	19.0	9.3	3.6	100.0	0.5	9.2	16.9	22.3	25.6	16.6	9.0	100.0	
male %	2.2	9.2	16.1	23.3	23.9	16.1	9.2	100.0	0.5	5.5	9.1	16.4	36.4	20.0	12.7	100.0	
female %	5.7	16.3	25.7	23.9	18.0	8.0	2.4	100.0	0.6	9.8	18.2	23.2	23.8	16.1	8.3	100.0	
<i>Evangelical-Lutheran religion</i>																	
no.	153	484	670	797	612	253	124	3 093	3	13	20	32	54	19	21	162	
%	4.9	15.6	21.7	25.8	19.8	8.2	4.0	100.0	1.9	8.0	12.3	19.8	33.3	11.7	13.0	100.0	
male %	2.1	9.6	15.8	24.1	26.8	13.6	7.9	100.0	0.9	9.1	11.4	15.9	29.6	13.6	20.5	100.0	
female %	5.9	17.6	23.6	26.3	17.5	6.4	2.7	100.0	2.5	7.6	12.7	21.2	34.8	11.0	10.2	100.0	
<i>Orthodox religion</i>																	
no.		6	7	9	7	2	1	32	1				1			2	
%		18.8	21.9	28.1	21.9	6.3	3.1	100.0	50.0				50.0			100.0	
male %		25.0	25.0	12.5	37.5			100.0	100.0							100.0	
female %		16.7	20.8	33.3	16.7	8.3	4.2	100.0					100.0				
<i>social studies</i>																	
no.	155	566	745	728	634	365	141	3 334	5	14	21	26	37	25	26	154	
%	4.6	17.0	22.3	21.8	19.0	10.9	4.2	100.0	3.2	9.1	13.6	16.9	24.0	16.2	16.9	100.0	
male %	4.2	14.6	20.6	20.9	20.5	12.7	6.5	100.0		7.4	13.2	14.7	29.4	8.8	26.5	100.0	
female %	5.2	19.5	24.2	22.9	17.4	9.0	1.8	100.0	5.8	10.5	14.0	18.6	19.8	22.1	9.3	100.0	
<i>health education</i>																	
no.	201	660	844	1 114	697	519	168	4 203	10	36	37	54	52	22	10	221	
%	4.8	15.7	20.1	26.5	16.6	12.3	4.0	100.0	4.5	16.3	16.7	24.4	23.5	10.0	4.5	100.0	
male %	1.5	7.1	13.9	25.4	20.7	21.6	9.9	100.0	3.1	15.6	15.6	25.0	25.0	21.9	9.4	100.0	
female %	5.7	18.0	21.8	26.8	15.5	9.8	2.4	100.0	4.8	19.1	16.9	24.3	23.3	7.9	3.7	100.0	
<i>Swedish as a second language</i>																	
no.		1	1					2									
%		50.0	50.0					100.0									
male %		50.0	50.0					100.0									
female %																	
<i>Finnish as a second language</i>																	
no.	18	46	69	71	31	25	15	275	6	6	5	17	15	10	5	58	
%	6.5	16.7	25.1	25.8	11.3	9.1	5.5	100.0	10.3	10.3	8.6	29.3	25.9	17.2	8.6	100.0	
male %	3.5	14.2	26.6	25.7	15.0	6.2	8.9	100.0	3.3	3.3	6.7	26.7	30.0	20.0	13.3	100.0	
female %	8.6	18.5	24.1	25.9	8.6	11.1	3.1	100.0	17.9	17.9	10.7	32.1	21.4	14.3	3.6	100.0	



test	youth education						adult education						subtotals	I	subtotals	
	L	E	M	C	B	A	L	E	M	C	B	A				
<i>German, A-level</i>																
no.	25	84	107	98	88	48	17	467	1	1	3	3	3	1	2	11
%	5.4	18.0	22.9	21.0	18.8	10.3	3.6	100.0	9.1	9.1	27.3	27.3	27.3	9.1	18.2	100.0
male %	4.2	21.0	20.3	21.0	18.9	11.2	3.5	100.0			66.7	66.7	66.7	33.3		100.0
female %	5.9	16.7	24.1	21.0	18.8	9.9	3.7	100.0	12.5	12.5	12.5	37.5	37.5		25.0	100.0
<i>Russian, A-level</i>																
no.	29	47	40	12	2	3		133	3	6	3	1	1	1	1	15
%	21.8	35.3	30.1	9.0	1.5	2.3		100.0	20.0	40.0	20.0	6.7	6.7	6.7	6.7	100.0
male %	23.8	28.6	23.8	19.1	2.4	2.4		100.0	20.0	40.0	20.0	20.0	20.0	20.0		100.0
female %	20.9	38.5	33.0	4.4	1.1	2.2		100.0	20.0	40.0	20.0	10.0	10.0	10.0		100.0
<i>Inari Sami, C-level</i>																
no.																
%																
male %																
female %																
<i>Northern Sami, C-level</i>																
no.		1		2	3			6								
%		16.7		33.3	50.0			100.0								
male %																
female %		20.0		40.0	40.0			100.0								
<i>English, C-level</i>																
no.	10	49	66	83	48	27	10	293	5	10.4	10	7	10	10	6	48
%	3.4	16.7	22.5	28.3	16.4	9.2	3.4	100.0	10.4	20.8	14.6	14.6	14.6	20.8	12.5	100.0
male %	3.9	22.3	21.5	26.2	16.9	6.2	3.1	100.0	14.7	35.7	35.7	35.7	35.7	21.4	21.4	100.0
female %	3.1	12.3	23.3	30.1	16.0	11.7	3.7	100.0	14.7	14.7	17.7	17.7	17.7	26.5	8.8	100.0
<i>French, C-level</i>																
no.	19	69	78	76	56	31	10	339	4	36.4	1	2	2	1	2	11
%	5.6	20.4	23.0	22.4	16.5	9.1	2.9	100.0	36.4	36.4	9.1	18.2	18.2	9.1	18.2	100.0
male %	6.0	32.0	22.0	14.0	14.0	12.0		100.0								
female %	5.5	18.3	23.2	23.9	17.0	8.7	3.5	100.0	36.4	36.4	9.1	18.2	18.2	9.1	18.2	100.0
<i>Portuguese, C-level</i>																
no.		2	4	4	2	1		13								2
%		15.4	30.8	30.8	15.4	7.7		100.0								100.0
male %																
female %		22.2	33.3	11.1	22.2	11.1		100.0								100.0
<i>Latin, C-level</i>																
no.	2	2	5	3	4			18								
%	11.1	11.1	27.8	16.7	22.2			100.0								
male %	16.7		33.3	16.7	33.3			100.0								
female %	8.3	16.7	25.0	16.7	16.7			100.0								
<i>Latin, broader syllabus</i>																
no.	2	2	1	1	1			7								
%	28.6	28.6	14.3	14.3	14.3			100.0								
male %	33.3	33.3			33.3			100.0								
female %	25.0	25.0	25.0	25.0				100.0								
<i>Spanish, C-level</i>																
no.	17	37	37	50	38	17	4	200	3	15.8	6	3	3	4	3	19
%	8.5	18.5	18.5	25.0	19.0	8.5	2.0	100.0	15.8	31.6	31.6	15.8	15.8	21.1	15.8	100.0
male %	5.4	8.1	18.9	27.0	16.2	24.3		100.0								
female %	9.2	20.9	18.4	24.5	19.6	4.9	2.5	100.0	20.0	20.0	33.3	13.3	13.3	20.0	20.0	100.0





test	youth education						adult education						subtotals	I	subtotals		
	L	E	M	C	B	A	L	E	M	C	B	A					
history																	
no.	171	512	687	848	757	338	163	3476	5	16	21	55	76	51	29	253	
%	4.9	14.7	19.8	24.4	21.8	9.7	4.7	100.0	2.0	6.3	8.3	21.7	30.0	20.2	11.5	100.0	
male %	4.3	12.9	18.6	25.1	22.6	10.8	5.7	100.0	3.3	6.7	8.0	20.0	27.3	22.7	12.0	100.0	
female %	5.9	17.5	21.5	23.3	20.6	8.1	3.2	100.0		5.8	8.7	24.3	34.0	16.5	10.7	100.0	
chemistry																	
no.	70	224	268	325	267	159	61	1374	2	6	13	13	14	8	10	66	
%	5.1	16.3	19.5	23.7	19.4	11.6	4.4	100.0	3.0	9.1	19.7	19.7	21.2	12.1	15.2	100.0	
male %	4.7	16.2	20.4	22.6	17.8	12.9	5.3	100.0	5.3	13.2	23.7	15.8	18.4	7.9	15.8	100.0	
female %	5.7	16.4	18.2	25.1	21.8	9.6	3.2	100.0		3.6	14.3	25.0	25.0	17.9	14.3	100.0	
psychology																	
no.	138	454	552	639	447	250	106	2586	3	28	61	73	71	51	26	313	
%	5.3	17.6	21.3	24.7	17.3	9.7	4.1	100.0	1.0	8.9	19.5	23.3	22.7	16.3	8.3	100.0	
male %	2.7	10.1	15.7	23.5	21.5	17.1	9.5	100.0	2.2	4.4	21.7	26.1	17.4	17.4	10.9	100.0	
female %	6.0	19.4	22.8	25.0	16.2	7.8	2.8	100.0	0.8	9.7	19.1	22.9	23.6	16.1	7.9	100.0	
Evangelical-Lutheran religion																	
no.	94	221	285	367	289	194	72	1522	1	7	18	20	20	21	15	102	
%	6.2	14.5	18.7	24.1	19.0	12.7	4.7	100.0	1.0	6.9	17.6	19.6	19.6	20.6	14.7	100.0	
male %	5.1	8.2	12.3	24.9	21.0	17.4	11.0	100.0		10.0	10.0	15.0	20.0	30.0	15.0	100.0	
female %	6.5	16.7	20.9	23.9	18.3	11.1	2.6	100.0	1.2	6.1	19.5	20.7	19.5	18.3	14.6	100.0	
Orthodox religion																	
no.	1	2	5	4	1	1	2	16								1	
%	6.3	12.5	31.3	25.0	6.3	6.3	12.5	100.0								100.0	
male %	20.0		40.0	20.0			20.0	100.0									
female %		18.2	27.3	27.3	9.1	9.1	9.1	100.0								100.0	
social studies																	
no.	89	210	299	319	289	151	60	1417	2	9	18	23	27	16	15	110	
%	6.3	14.8	21.1	22.5	20.4	10.7	4.2	100.0	1.8	8.2	16.4	20.9	24.5	14.5	13.6	100.0	
male %	5.6	13.2	20.3	21.7	21.2	12.6	5.4	100.0		10.0	10.0	20.0	24.0	22.0	14.0	100.0	
female %	7.0	16.6	21.9	23.4	19.6	8.6	3.1	100.0	3.3	6.7	21.7	21.7	25.0	8.3	13.3	100.0	
health education																	
no.	160	429	696	911	572	447	123	3338	8	17	29	48	35	25	14	176	
%	4.8	12.9	20.9	27.3	17.1	13.4	3.7	100.0	4.5	9.7	16.5	27.3	19.9	14.2	8.0	100.0	
male %	1.2	6.5	15.1	24.4	20.9	23.7	8.2	100.0	3.9	11.5	11.5	15.4	23.1	15.4	30.8	100.0	
female %	5.9	14.8	22.6	28.2	16.0	10.2	2.3	100.0	4.7	11.3	17.3	29.3	19.3	14.0	4.0	100.0	
Swedish as a second language																	
no.				1				1									
%				100.0				100.0									
male %				100.0				100.0									
female %								0.0									
Finnish as a second language																	
no.	6	22	22	31	27	8	13	129	1	6	3	4	7	10	5	36	
%	4.7	17.1	17.1	24.0	20.9	6.2	10.1	100.0	2.8	16.7	8.3	11.1	19.4	27.8	13.9	100.0	
male %	2.0	24.0	14.0	28.0	16.0	6.0	10.0	100.0		17.7		11.8	17.7	41.2	11.8	100.0	
female %	6.3	12.7	19.0	21.5	24.1	6.3	10.1	100.0	5.3	15.8	15.8	10.5	21.1	15.8	15.8	100.0	



region	youth education						adult education					
	mother tongue, Finnish			mother tongue, Swedish			mother tongue, Finnish			mother tongue, Swedish		
	male	female	subtotals	male	female	subtotals	male	female	subtotals	male	female	subtotals
<i>11 Northern Savo</i>												
examinees	656	863	1 519				1 519	863	1 519	23	42	65
passed	607	823	1 430				1 430	823	1 430	16	35	51
failed	49	40	89				89	40	89	7	7	14
failure %	7.5	4.6	5.9				5.9	4.6	5.9	30.4	16.7	21.5
<i>12 Northern Karelia</i>												
examinees	456	592	1 048				1 048	592	1 048	10	11	21
passed	426	565	991				991	565	991	8	8	16
failed	30	27	57				57	27	57	2	3	5
failure %	6.6	4.6	5.4				5.4	4.6	5.4	20.0	27.3	23.8
<i>13 Central Finland</i>												
examinees	700	924	1 624				1 624	924	1 624	4	19	23
passed	637	885	1 522				1 522	885	1 522	4	11	15
failed	63	39	102				102	39	102		8	8
failure %	9.0	4.2	6.3				6.3	4.2	6.3	0.0	42.1	34.8
<i>14 Southern Ostrobothnia</i>												
examinees	513	759	1 272				1 272	759	1 272	26	50	76
passed	466	706	1 172				1 172	706	1 172	19	35	54
failed	47	53	100				100	53	100	7	15	22
failure %	9.2	7.0	7.9				7.9	7.0	7.9	26.9	30.0	28.9
<i>15 Ostrobothnia</i>												
examinees	205	254	459	228	342	570	1 029	596	1 029	1	3	4
passed	184	230	414	217	337	554	968	567	968	1	3	4
failed	21	24	45	11	5	16	61	29	61			
failure %	10.2	9.4	9.8	4.8	1.5	2.8	5.9	4.9	5.9	0.0	0.0	0.0
<i>16 Central Ostrobothnia</i>												
examinees	128	272	400	18	32	50	450	304	450	4	6	10
passed	122	261	383	14	31	45	428	292	428	4	4	8
failed	6	11	17	4	1	5	22	12	22		2	2
failure %	4.7	4.0	4.3	22.2	3.1	10.0	4.9	3.9	4.9	0.0	33.3	20.0
<i>17 Northern Ostrobothnia</i>												
examinees	923	1 312	2 235	3	2	5	2 240	1 314	2 240	43	60	103
passed	824	1 227	2 051	3	2	5	2 056	1 229	2 056	31	40	71
failed	99	85	184				184	85	184	12	20	32
failure %	10.7	6.5	8.2	0.0	0.0	0.0	8.2	6.5	8.2	27.9	33.3	31.1
<i>18 Kainuu</i>												
examinees	235	329	564				564	329	564	17	14	31
passed	207	309	516				516	309	516	15	12	27
failed	28	20	48				48	20	48	2	2	4
failure %	11.9	6.1	8.5				8.5	6.1	8.5	11.8	14.3	12.9
<i>19 Lapland</i>												
examinees	426	638	1 064				1 064	638	1 064	42	49	91
passed	376	593	969				969	593	969	34	40	74
failed	50	45	95				95	45	95	8	9	17
failure %	11.7	7.1	8.9				8.9	7.1	8.9	19.1	18.4	18.7
<i>20 Åland Islands</i>												
examinees				25	52	77	77	52	77			
passed				24	52	76	76	52	76			
failed				1		1	1		1			
failure %				4.0	0.0	1.3	1.3	4.0	1.3			
<b>entire country</b>	<b>11 670</b>	<b>15 898</b>	<b>27 568</b>	<b>805</b>	<b>1 115</b>	<b>1 920</b>	<b>29 488</b>	<b>17 013</b>	<b>29 488</b>	<b>926</b>	<b>1 274</b>	<b>2 200</b>
examinees	<b>10 670</b>	<b>15 073</b>	<b>25 743</b>	<b>770</b>	<b>1 097</b>	<b>1 867</b>	<b>27 610</b>	<b>16 170</b>	<b>27 610</b>	<b>648</b>	<b>954</b>	<b>1 602</b>
passed	<b>1 000</b>	<b>825</b>	<b>1 825</b>	<b>35</b>	<b>18</b>	<b>53</b>	<b>1 878</b>	<b>843</b>	<b>1 878</b>	<b>278</b>	<b>320</b>	<b>598</b>
failed	<b>86</b>	<b>52</b>	<b>6.6</b>	<b>4.3</b>	<b>1.6</b>	<b>2.8</b>	<b>6.4</b>	<b>5.0</b>	<b>6.4</b>	<b>30.0</b>	<b>25.1</b>	<b>27.2</b>
failure %										<b>25.0</b>	<b>14.8</b>	<b>19.1</b>
										<b>29.8</b>	<b>24.7</b>	<b>26.9</b>

## 4. Matriculation Examination candidates by region, youth or adult education, and mother tongue, autumn 2007.

region	mother tongue, Finnish				youth education				adult education					
	male		female		mother tongue, Swedish		examinees together		mother tongue, Finnish		mother tongue, Swedish		examinees together	
	subtotals	subtotals	male	female	male	female	subtotals	subtotals	male	female	male	female	subtotals	subtotals
<i>01 Uusimaa</i>														
examinees	577	607	1 184	56	26	607	633	1 240	218	255	473	6	6	13
passed	445	489	934	49	24	470	513	983	126	154	280	5	3	8
failed	132	118	250	7	2	137	120	257	92	101	193	2	3	5
failure %	22.9	19.4	21.1	12.5	7.7	22.6	19.0	20.7	42.2	39.6	40.8	28.6	50.0	38.5
<i>02 Eastern Uusimaa</i>														
examinees	30	13	43	14	4	40	17	57	6	3	9	6	3	9
passed	17	8	25	11	2	26	10	36	2	2	4	2	2	4
failed	13	5	18	3	2	14	7	21	4	1	5	4	1	5
failure %	43.3	38.5	41.9	21.4	50.0	35.0	41.2	36.8	66.7	33.3	55.6	66.7	33.3	55.6
<i>03 Southwestern Finland</i>														
examinees	93	114	207	9	3	99	117	216	60	68	128	60	68	128
passed	71	83	154	7	2	76	85	161	27	40	67	27	40	67
failed	22	31	53	2	1	23	32	55	33	28	61	33	28	61
failure %	23.7	27.2	25.6	22.2	33.3	23.2	27.4	25.5	55.0	41.2	47.7	55.0	41.2	47.7
<i>04 Satakunta</i>														
examinees	84	71	155	1	1	84	72	156	7	29	36	7	29	36
passed	48	46	94	1	1	48	47	95	3	15	18	3	15	18
failed	36	25	61	0	0	36	25	61	4	14	18	4	14	18
failure %	42.9	35.2	39.4	0.0	0.0	42.9	34.7	39.1	57.1	48.3	50.0	57.1	48.3	50.0
<i>05 Kanta-Häme</i>														
examinees	47	40	87	4	4	47	40	87	10	13	23	10	13	23
passed	34	29	63	29	4	34	29	63	4	8	12	4	8	12
failed	13	11	24	13	11	13	11	24	6	5	11	6	5	11
failure %	27.7	27.5	27.6	27.7	27.5	27.7	27.5	27.6	60.0	38.5	47.8	60.0	38.5	47.8
<i>06 Pirkanmaa</i>														
examinees	133	122	255	4	4	133	126	259	46	74	120	46	74	120
passed	91	89	180	4	4	91	93	184	21	50	71	21	50	71
failed	42	33	75	0	0	42	33	75	25	24	49	25	24	49
failure %	31.6	27.1	29.4	0.0	0.0	31.6	26.2	29.0	54.3	32.4	40.8	54.3	32.4	40.8
<i>07 Päijät-Häme</i>														
examinees	67	56	123	67	56	67	56	123	17	25	42	17	25	42
passed	42	36	78	42	36	42	36	78	12	17	29	12	17	29
failed	25	20	45	25	20	25	20	45	5	8	13	5	8	13
failure %	37.3	35.7	36.6	37.3	35.7	37.3	35.7	36.6	29.4	32.0	31.0	29.4	32.0	31.0
<i>08 Ympäri-alue</i>														
examinees	51	43	94	51	43	51	43	94	4	25	29	4	25	29
passed	26	20	46	26	20	26	20	46	4	14	18	4	14	18
failed	25	23	48	25	23	25	23	48	0	11	11	0	11	11
failure %	49.0	53.5	51.1	49.0	53.5	49.0	53.5	51.1	0.0	44.0	37.9	0.0	44.0	37.9
<i>09 Southern Karelia</i>														
examinees	52	43	95	52	43	52	43	95	11	15	26	11	15	26
passed	43	34	77	43	34	43	34	77	10	10	20	10	10	20
failed	9	9	18	9	9	9	9	18	1	5	6	1	5	6
failure %	17.3	20.9	18.9	17.3	20.9	17.3	20.9	18.9	9.1	33.3	23.1	9.1	33.3	23.1
<i>10 Southern Savo</i>														
examinees	45	46	91	45	46	45	46	91	16	18	34	16	18	34
passed	27	28	55	27	28	27	28	55	5	13	18	5	13	18
failed	18	18	36	18	18	18	18	36	11	5	16	11	5	16
failure %	40.0	39.1	39.6	40.0	39.1	40.0	39.1	39.6	68.8	27.8	47.1	68.8	27.8	47.1

region	youth education						adult education								
	mother tongue, Finnish			mother tongue, Swedish			mother tongue, Finnish			mother tongue, Swedish					
	male	female	subtotals	male	female	subtotals	male	female	subtotals	male	female	subtotals	male	female	subtotals
<b>11 Northern Savo</b>															
examinees	91	96	187	23	23	46	50	49	99	2	3	5	8	15	23
passed	62	72	134	17	21	38	34	41	75	2	3	5	1	8	9
failed	29	24	53	6	2	8	16	8	24	0	0	0	7	7	14
failure %	31.9	25.0	28.3	26.1	8.7	17.4	32.0	16.3	24.2	0.0	0.0	0.0	87.5	46.7	60.9
examinees together															
female															
subtotals	91	96	187	101	82	183	54	78	132	13	28	41	13	28	41
<b>12 Northern Karelia</b>															
examinees	47	60	107	101	82	183	54	78	132	13	28	41	13	28	41
passed	32	48	80	75	56	131	32	56	88	8	16	24	8	16	24
failed	15	12	27	26	26	52	22	22	44	5	12	17	5	12	17
failure %	31.9	20.0	25.2	25.7	31.7	28.4	40.7	28.2	33.3	38.5	42.9	41.5	38.5	42.9	41.5
examinees together															
female															
subtotals	47	60	107	101	82	183	54	78	132	13	28	41	13	28	41
<b>13 Central Finland</b>															
examinees	101	82	183	79	66	145	182	145	327	476	654	1130	15	21	36
passed	75	56	131	64	57	121	64	57	121	269	333	602	6	11	17
failed	26	26	52	15	9	24	118	88	126	207	261	428	9	10	19
failure %	25.7	31.7	28.4	19.0	13.6	16.6	29.2	25.4	27.3	43.5	39.9	41.4	60.0	47.6	52.8
examinees together															
female															
subtotals	101	82	183	79	66	145	182	145	327	476	654	1130	15	21	36
<b>14 Southern Ostrobothnia</b>															
examinees	54	78	132	54	78	132	54	78	132	13	28	41	13	28	41
passed	32	56	88	32	56	88	32	56	88	8	16	24	8	16	24
failed	22	22	44	22	22	44	22	22	44	5	12	17	5	12	17
failure %	40.7	28.2	33.3	40.7	28.2	33.3	40.7	28.2	33.3	38.5	42.9	41.5	38.5	42.9	41.5
examinees together															
female															
subtotals	54	78	132	54	78	132	54	78	132	13	28	41	13	28	41
<b>15 Ostrobothnia</b>															
examinees	27	26	53	23	23	46	50	49	99	2	3	5	8	15	23
passed	17	20	37	17	21	38	34	41	75	2	3	5	1	8	9
failed	10	6	16	6	2	8	16	8	24	0	0	0	7	7	14
failure %	37.0	23.1	30.2	26.1	8.7	17.4	32.0	16.3	24.2	0.0	0.0	0.0	87.5	46.7	60.9
examinees together															
female															
subtotals	27	26	53	23	23	46	50	49	99	2	3	5	8	15	23
<b>16 Central Ostrobothnia</b>															
examinees	15	18	33	5	3	8	20	21	41	2	2	4	2	2	4
passed	11	10	21	4	3	7	15	13	28	2	2	4	2	2	4
failed	4	8	12	1	1	2	5	8	13	0	0	0	0	0	0
failure %	26.7	44.4	36.4	20.0	0.0	12.5	25.0	38.1	31.7	0.0	0.0	0.0	0.0	0.0	0.0
examinees together															
female															
subtotals	15	18	33	5	3	8	20	21	41	2	2	4	2	2	4
<b>17 Northern Ostrobothnia</b>															
examinees	161	180	341	161	181	342	161	181	342	32	27	59	32	27	59
passed	106	130	236	106	130	236	106	130	236	21	13	34	21	13	34
failed	55	50	105	55	51	106	55	51	106	11	14	25	11	14	25
failure %	34.2	27.8	30.8	34.2	28.2	31.0	34.2	28.2	31.0	34.4	51.9	42.4	34.4	51.9	42.4
examinees together															
female															
subtotals	161	180	341	161	181	342	161	181	342	32	27	59	32	27	59
<b>18 Kainuu</b>															
examinees	47	46	93	47	46	93	47	46	93	3	7	10	3	7	10
passed	33	32	65	33	32	65	33	32	65	2	5	7	2	5	7
failed	14	14	28	14	14	28	14	14	28	1	2	3	1	2	3
failure %	29.8	30.4	30.1	29.8	30.4	30.1	29.8	30.4	30.1	33.3	28.6	30.0	33.3	28.6	30.0
examinees together															
female															
subtotals	47	46	93	47	46	93	47	46	93	3	7	10	3	7	10
<b>19 Lapland</b>															
examinees	101	120	221	101	120	221	101	120	221	7	13	20	7	13	20
passed	70	94	164	70	94	164	70	94	164	5	5	10	5	5	10
failed	31	26	57	31	26	57	31	26	57	2	8	10	2	8	10
failure %	30.7	21.7	25.8	30.7	21.7	25.8	30.7	21.7	25.8	28.6	61.5	50.0	28.6	61.5	50.0
examinees together															
female															
subtotals	101	120	221	101	120	221	101	120	221	7	13	20	7	13	20
<b>20 Åland Islands</b>															
examinees				5	1	6	5	1	6						
passed				4	1	5	4	1	5						
failed				1	0	1	1	0	1						
failure %				20.0	100.0	33.3	20.0	100.0	33.3						
entire country															
examinees	1823	1861	3684	79	66	145	1902	1927	3829	476	654	1130	15	21	36
passed	1282	1380	2662	64	57	121	1346	1437	2783	269	333	602	6	11	17
failed	541	481	1022	15	9	24	556	490	1046	207	261	468	9	10	19
failure %	29.7	25.8	27.7	19.0	13.6	16.6	29.2	25.4	27.3	43.5	39.9	41.4	60.0	47.6	52.8
examinees together															
female															
subtotals	1823	1861	3684	79	66	145	1902	1927	3829	476	654	1130	15	21	36
examinees together															
male															
subtotals	491	675	1166	275	404	679	491	675	1166	275	404	679	491	675	1166
examinees together															
male															
subtotals	216	271	487	216	271	487	216	271	487	216	271	487	216	271	487
examinees together															
female															
subtotals	44.0	40.1	41.8	44.0	40.1	41.8	44.0	40.1	41.8	44.0	40.1	41.8	44.0	40.1	41.8



## Contact information

The Matriculation Examination Board

Postal address PB 50

00581 Helsinki, Finland

Visiting address Suvilahdenkatu 10 B

00580 Helsinki, Finland

Tel. +358 9 773801

Fax +358 9 762274

E-mail [forename.surname@ylioppilastutkinto.fi](mailto:forename.surname@ylioppilastutkinto.fi)

Internet [www.ylioppilastutkinto.fi](http://www.ylioppilastutkinto.fi)